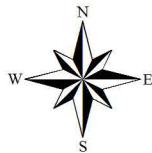


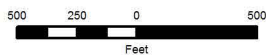
3A-1-W002

LEGEND

-  Well
-  Town
-  Stock Pond
-  Basin Boundary
-  Sub-Area Boundary
-  Section Boundary



1 inch = 800 feet



Zuni River Basin
Hydrographic Survey

Sub-Area 3
Subfile Number: ZRB-4-0371
PLSS: S21, T13N, R16W
Sheet 1 of 3

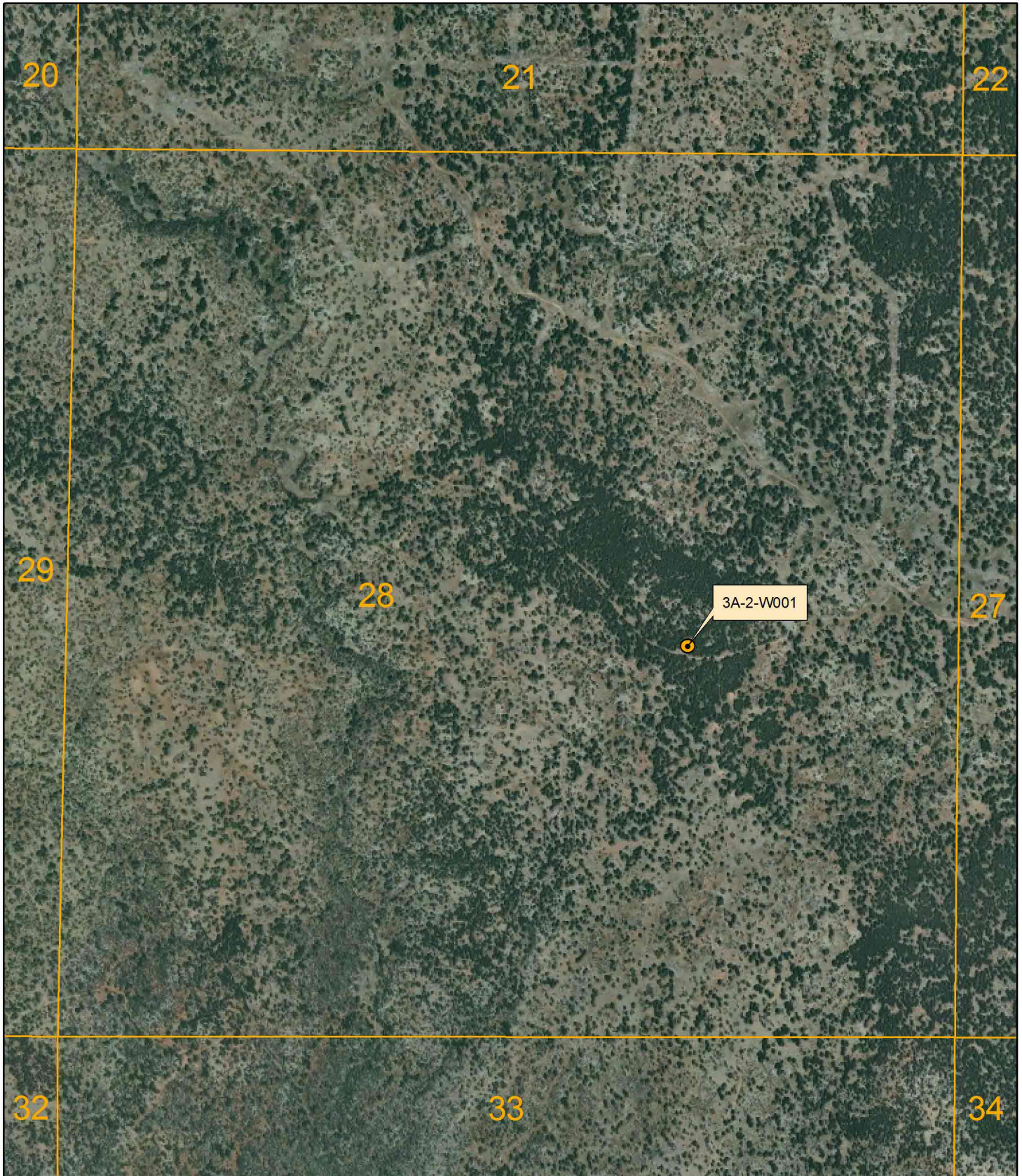
April 2012








Natural Resources Consulting Engineers, Inc.

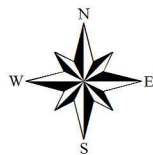
Fort Collins, CO Oakland, CA Asmara, ERITREA

Project Manager: L. Niel Allen, P.E., Ph.D.

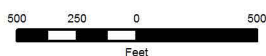


LEGEND

-  Well
-  Town
-  Stock Pond
-  Basin Boundary
-  Sub-Area Boundary
-  Section Boundary



1 inch = 800 feet



Zuni River Basin
Hydrographic Survey

Sub-Area 3
Subfile Number: ZRB-4-0371
PLSS: S28, T13N, R16W
Sheet 2 of 3

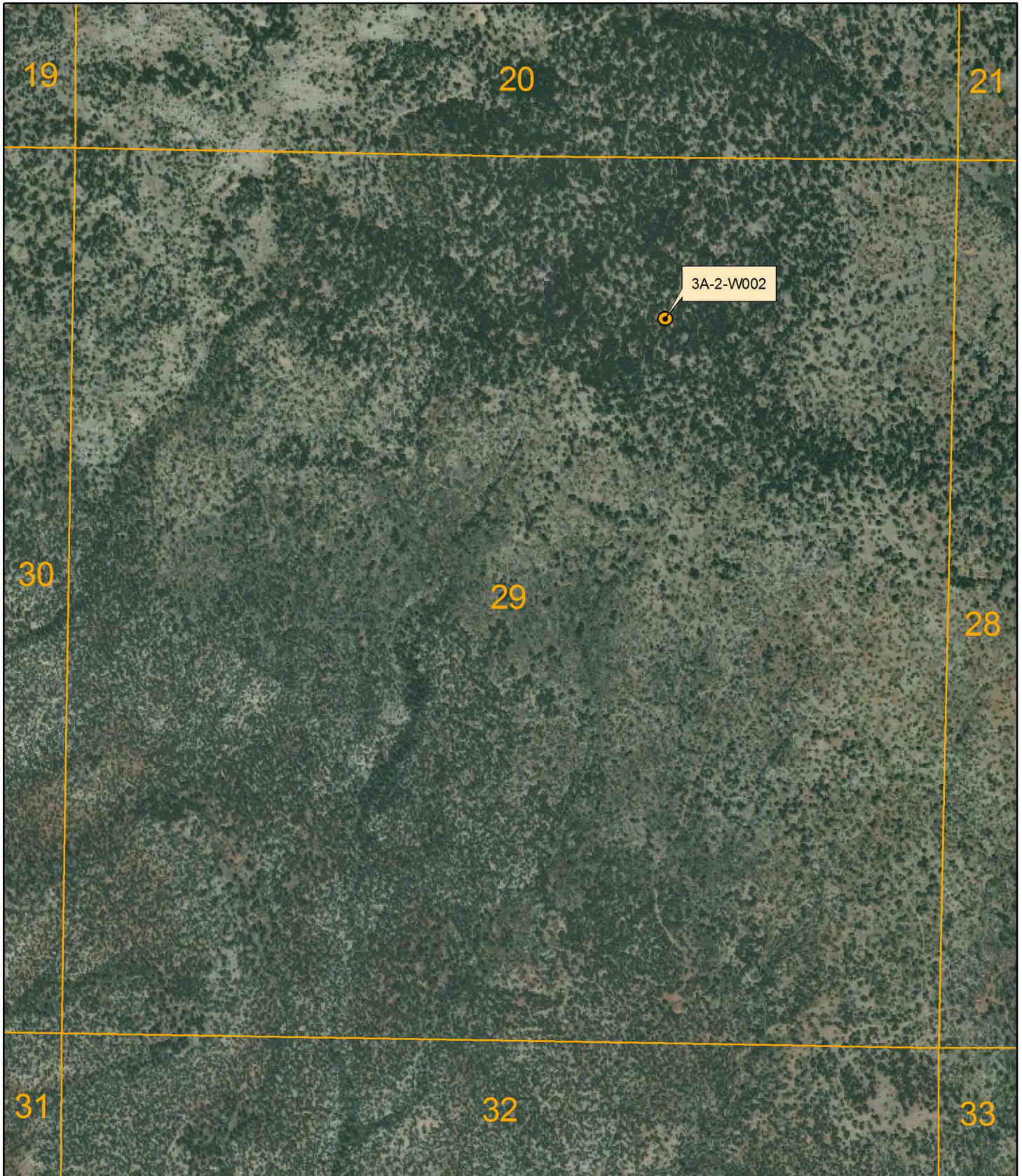
April 2012



Natural Resources Consulting Engineers, Inc.

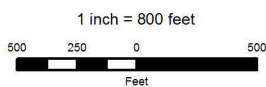
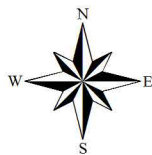
Fort Collins, CO Oakland, CA Asmara, ERITREA

Project Manager: L. Niel Allen, P.E., Ph.D.



LEGEND

-  Well
-  Town
-  Stock Pond
-  Basin Boundary
-  Sub-Area Boundary
-  Section Boundary



Zuni River Basin
Hydrographic Survey

Sub-Area 3
Subfile Number: ZRB-4-0371
PLSS: S29, T13N, R16W
Sheet 3 of 3

April 2012



Natural Resources Consulting Engineers, Inc.
Fort Collins, CO Oakland, CA Asmara, ERITREA
Project Manager: L. Niel Allen, P.E., Ph.D.