



**ZUNI RIVER BASIN ADJUDICATION
HYDROGRAPHIC SURVEY REPORT
FOR SUB AREA 7**

**United States of America
v.
A & R Productions, et al.
CIV No. 01 0072 BB/WWD-ACE**

Prepared Under the Direction of the

UNITED STATES DEPARTMENT OF INTERIOR

In Cooperation with the

**State of New Mexico
Office of the State Engineer
Hydrographic Survey Bureau**

By

NATURAL RESOURCES CONSULTING ENGINEERS, INC.

131 Lincoln Avenue, Suite 300
Fort Collins, Colorado 80524
(970) 224-1851/FAX (970) 224-1885

January 2006

TABLE OF CONTENTS

1	INTRODUCTION	1-3
1.1	Description of the Area.....	1-3
1.2	Technical Specification for Hydrographic Survey	1-7
1.3	Aerial Photography	1-7
2	GEOGRAPHIC INFORMATION SYSTEM.....	2-1
2.1	Global Positioning System.....	2-1
2.1.1	Field Data Logging Procedures	2-1
2.1.2	Office Data Processing Procedures.....	2-2
2.2	Field Inspections	2-2
2.2.1	Well Locations	2-2
2.2.2	Stock Pond Locations	2-2
2.2.3	Irrigated Land Locations.....	2-3
3	DUTY OF WATER (DIVERSION).....	3-1
3.1	Wells	3-1
3.2	Ponds.....	3-2
3.3	Irrigated Lands	3-2
4	FINDINGS OF THE HYDROGRAPHIC SURVEY	4-1
4.1	Subfiles	4-1
4.2	Map Labels.....	4-1
4.3	Office of State Engineer File Number	4-2
4.4	Summary of Findings of the Hydrographic Survey	4-2
4.5	Disclaimer	4-3
5	REFERENCES	5-1
	APPENDICES	1
	Appendix 1 - Report of Water Right Findings	
	Appendix 2 - Report of Natural Ponds	

LIST OF FIGURES

Figure 1-1: Zuni River Basin and Its Sub-areas1-5
Figure 1-2: Map Index for Sub-area 7 of the Zuni River Basin1-6

LIST OF TABLES

Table 4-1: Counts of Surveyed Wells and their Uses4-2
Table 4-2: Counts of Surveyed Ponds.....4-2

LIST OF MAPS

- Map 7A-1 – Zuni River Basin Hydrographic Survey
- Map 7A-2 – Zuni River Basin Hydrographic Survey
- Map 7A-3 – Zuni River Basin Hydrographic Survey
- Map 7A-4 – Zuni River Basin Hydrographic Survey
- Map 7A-5 – Zuni River Basin Hydrographic Survey
- Map 7A-6 – Zuni River Basin Hydrographic Survey
- Map 7A-7 – Zuni River Basin Hydrographic Survey
- Map 7A-8 – Zuni River Basin Hydrographic Survey
- Map 7B-1 – Zuni River Basin Hydrographic Survey
- Map 7B-2 – Zuni River Basin Hydrographic Survey
- Map 7B-3 – Zuni River Basin Hydrographic Survey
- Map 7B-4 – Zuni River Basin Hydrographic Survey
- Map 7B-5 – Zuni River Basin Hydrographic Survey
- Map 7B-6 – Zuni River Basin Hydrographic Survey
- Map 7B-7 – Zuni River Basin Hydrographic Survey
- Map 7B-8 – Zuni River Basin Hydrographic Survey
- Map 7C-1 – Zuni River Basin Hydrographic Survey
- Map 7C-2 – Zuni River Basin Hydrographic Survey
- Map 7C-3 – Zuni River Basin Hydrographic Survey
- Map 7C-4 – Zuni River Basin Hydrographic Survey
- Map 7C-5 – Zuni River Basin Hydrographic Survey
- Map 7C-6 – Zuni River Basin Hydrographic Survey

1 INTRODUCTION

The *United States v. State of New Mexico ex rel State Engineer, A&R Productions, et al.* case (Case number 01cv00072 BB) is currently pending in the United States District Court for the District of New Mexico. The Zuni River Basin was divided into 10 sub-areas to facilitate the orderly survey of water uses over multiple years (see Figure 1-1). During years 2004 and 2005, sub-area 7 of the Zuni River Basin area were surveyed for water uses. The major water uses in this sub-area are domestic and stock watering. This report shows the findings of the hydrographic survey for only non-federal and non-Indian lands. Maps showing the location of water uses are included with this report.

1.1 Description of the Area

The Zuni River Basin, depicted in Figure 1-1, covers approximately 1,930 square miles of land in Cibola and McKinley counties in the western central part of New Mexico. The Basin is bounded on the northwest and northeast by the Upper Puerco Basin and the Rio San Jose Basin, respectively, and on the southwest and southeast by the Carrizo Wash Basin and the North Plains Closed Basin, respectively. Figure 1-2 shows sub-area 7 with its map index.

Sub-area 7 of the Zuni River Basin consists of all of sections 1-4, 9-16, 21-27, and 34-36 in Township 9 North Range 16 West; all of sections 1-3, 9-17, and 19-36 in Township 8 North Range 16 West; all of Township 7 North Range 16 West; all of Township 6 North Range 16 West; all of sections 2-11, 14-19, and 21, and portions of sections 1,12,13,20 and 22-30 in Township 5 North Range 16 West; all of Township 9 North Range 15 West; all of Township 8 North Range 15 West; all of sections 1-24 and 26-35 and portions of sections 25 and 36 in Township 7 North Range 15 West; all of sections 3-9, 17-20, and 29-31, and portions of sections 1,2,10,11,15,16,21,28, 32 and 33 in Township 6 North Range 15 West; and portions of sections 5 and 6 in Township 5 North Range 15. The total acreage for sub-area 7 is 175,591 acres (274.4 sq. miles).

The climate of the area is characterized as semi-arid. The annual average minimum temperature is in the range of 30 to 34°F, and the annual average maximum temperature is in the range of 64 to 67°F. More variations in temperature are observed, with highs up to the 90's in the summer

and lows down to the teens in the winter. The average annual precipitation is in the range of 12 to 14 inches, while average annual snowfall is in the range of 17 to 44 inches, depending on location and elevation.

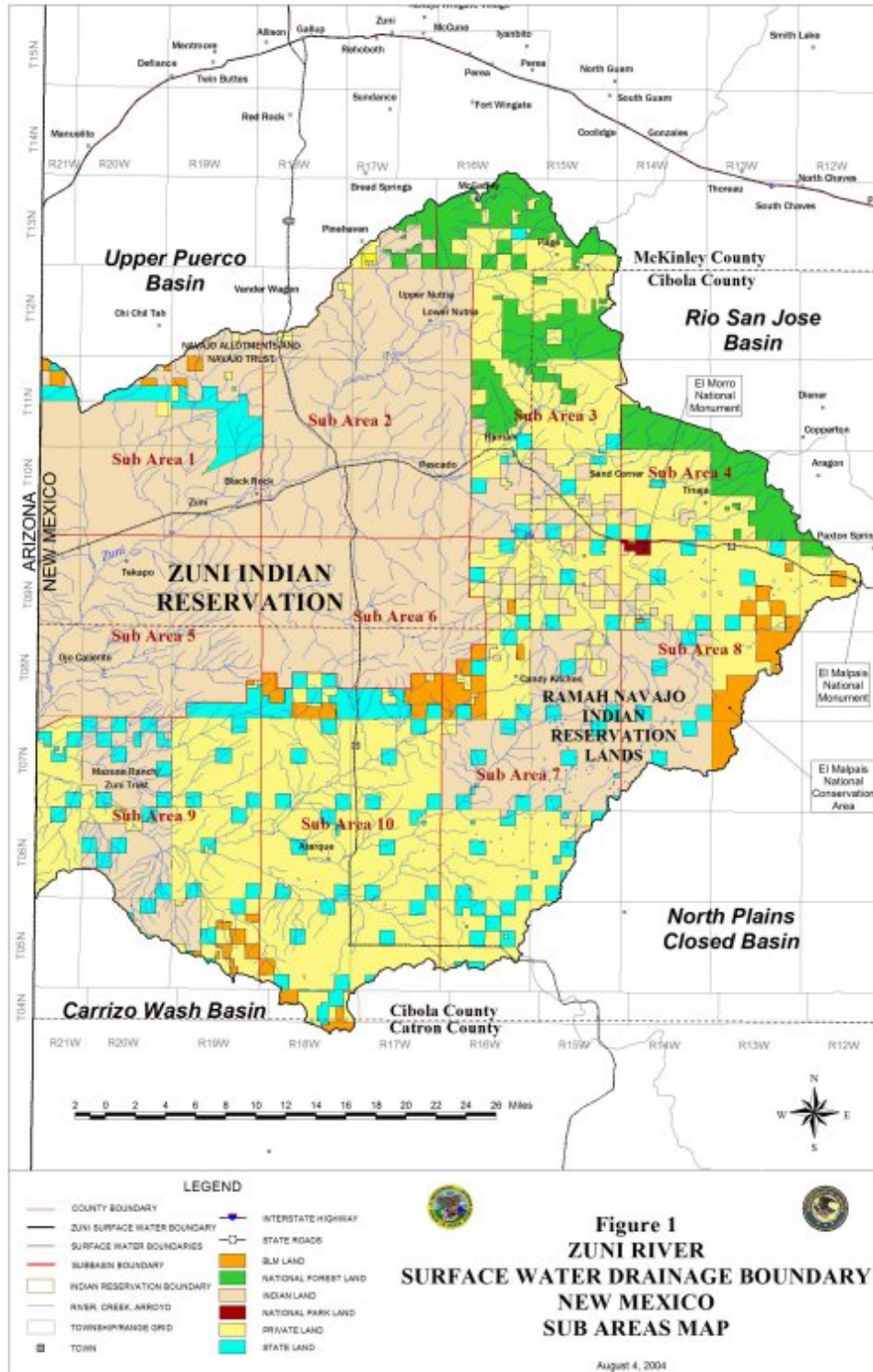


Figure 1-1: Zuni River Basin and Its Sub-areas

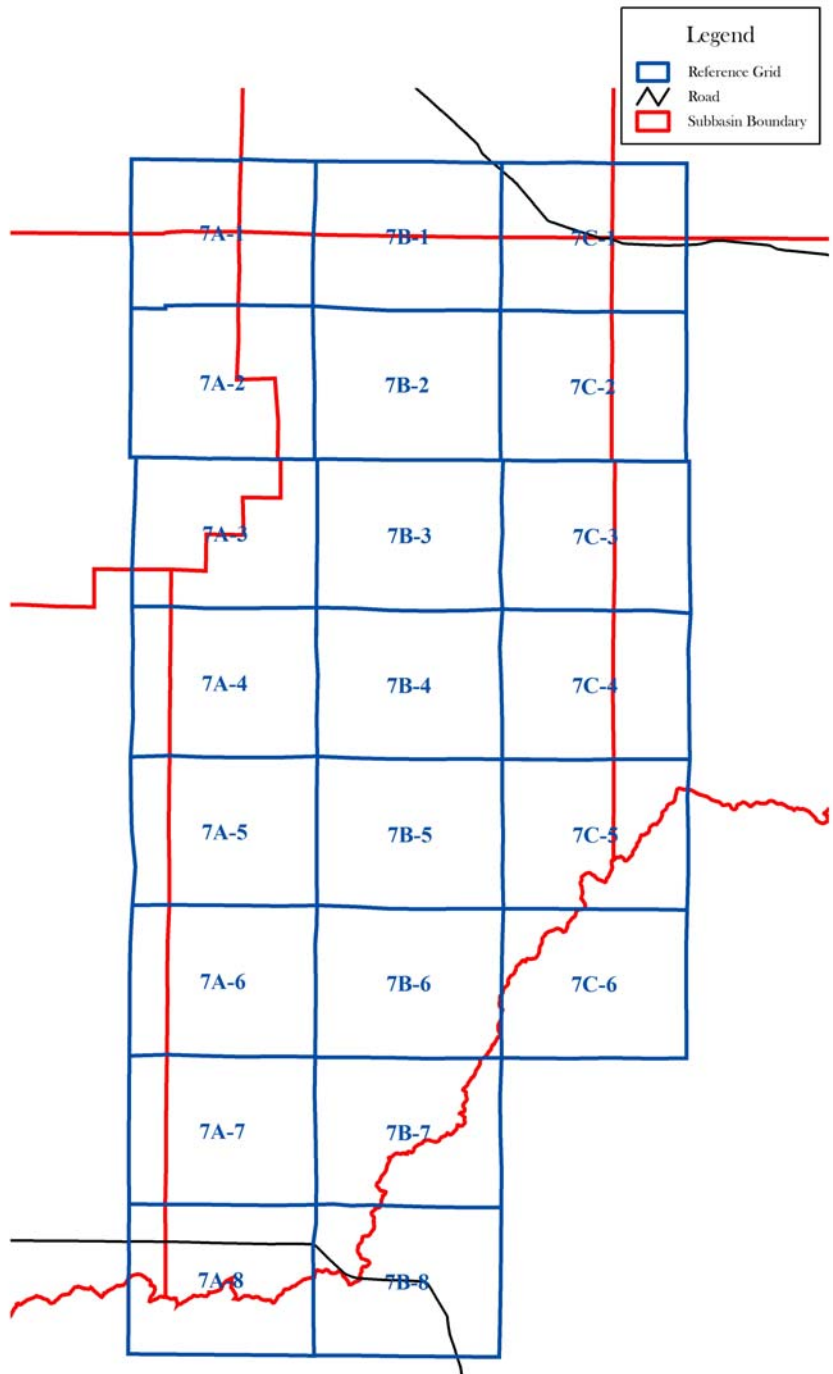


Figure 1-2: Map Index for Sub-area 7 of the Zuni River Basin

1.2 Technical Specification for Hydrographic Survey

The technical specifications for the hydrographic survey follow those prepared by the State of New Mexico, Office of the State Engineer, Hydrographic Survey Bureau (Hydrographic Survey Specifications) dated April 15, 2003. The United States and the State of New Mexico prepared a document entitled 'Joint Technical Progress Report, Zuni River Hydrographic Survey' (February 2003), which describes the procedure, variances, and schedule for the hydrographic survey. The United States and the State of New Mexico Hydrographic Survey Bureau consulted during the hydrographic survey field work and report preparation.

The Zuni River Basin lies within the Gallup Underground Administrative Basin, which was declared in March 14, 1994. Many of the domestic wells in the Zuni River Basin were drilled before the basin was declared and therefore did not require a permit. For this reason, a process was established requesting that water users update their water rights to include wells constructed prior to 1994. This process included mailing packets of information to land owners, holding a public meeting, and establishing field offices staffed by Office of the State Engineer personnel to help water users update and complete their water rights records. Additionally, whenever possible, the land owners were consulted concerning wells and ponds on their property at the time of the field assessments. The field assessment identified many wells without permits. The water rights identified during the abstracting process were linked to the information obtained in the field during the hydrographic survey.

1.3 Aerial Photography

Aerial photography and topographic maps were used as a basis for mapping the areas of interest. For Sub-area 7, United States Geological Survey (USGS) digital orthophoto quarter quadrangles (DOQQs), produced using aerial photography acquired in June and October of 1997, were plotted on a scale of 1:12,000 (1"=1000'). DOQQs are adequate for mapping of domestic and stock water uses based on the State of New Mexico Hydrographic Survey Technical Specifications dated April 15, 2003.

2 GEOGRAPHIC INFORMATION SYSTEM

All the geospatial components of the hydrographic survey water uses that were field inspected are stored in a Geographic Information System (GIS). The system used is in Windows-based ArcGIS software. The data and information stored consists of:

- Digital image data acquired for survey.
- Data (hard copy and electronic) obtained from state agencies including landowners, addresses, and ownership maps.
- Data and information acquired from the hydrographic survey field work.

As stated previously, USGS DOQQs were used for mapping purposes. The images were transferred into the New Mexico State Plane Coordinate System, West Zone, using the 1983 North American Datum.

Property ownership data and maps were obtained from the Cibola County Assessor's Office in Grants, New Mexico and from the McKinley County Assessor's office in Gallup, New Mexico.

All data gathered was compiled in a Microsoft Access database. The database includes names and addresses of owners, sub-file numbers, map labels, Office of State Engineer file/permit numbers, types of water source use and source, stock pond and well types, locations (PLSS), coordinates, aerial photograph dates and field visit dates, comments, and photograph identifications of the water features.

2.1 Global Positioning System

All water-feature locations were mapped using a Global Positioning System (GPS). Field crews used a Trimble GeoXT (hand-held 12 channel) GPS receiver. The integrated Wide Area Augmentation System (WAAS) differential GPS data service was used to achieve location data while in the field.

2.1.1 Field Data Logging Procedures

All GPS observations were made at an approximate antenna height of four feet. GPS data was logged at one position per second at maximum position dilution of precision 8.0 and a minimum

signal noise ratio of 3.0. The elevation mask used was 12 degrees. GPS data was collected using the internal antenna of the receiver.

2.1.2 Office Data Processing Procedures

Data was post-processed using a GeoXT software package that includes the Trimble Pathfinder Office version 2.90. Post-processing consisted of differential corrections of the raw receiver files using the New Mexico Institute of Mining and Technology base station at the University of New Mexico, Albuquerque. All data was analyzed in the North American Datum of 1983 and mapped in the New Mexico State Plane Coordinate System.

2.2 Field Inspections

2.2.1 Well Locations

Well locations were mapped using GPS. Rough locations of wells that have permit numbers were obtained from the New Mexico Office of the State Engineer's Water Administration Technical Engineering Resources System (WATERS) database. Wells that have no permit numbers were located either using information provided by land owners or using topographic maps. Locations of these wells were verified in the field. Photographs of wells were obtained during the field visits.

2.2.2 Stock Pond Locations

Stock ponds (dirt tanks) were located using aerial photos, declarations, state records, and information from land owners and then field mapped using GPS. In many instances, new stock ponds not visible on aerial photos were identified. These stock ponds were delineated with the GPS using a polygon feature. At the time of the visit, ponds were determined to be either man-made stock ponds or natural ponds. If a natural pond was excavated or diked, then the pond was determined to be man-made. Only dam elevations that are greater than 9-feet were recorded. Photographs of the stock ponds were taken during the field visit.

2.2.3 Irrigated Land Locations

Irrigated lands were delineated with the GPS using a polygon feature in cases where boundaries could not be clearly identified using the aerial photos. Photographs of the irrigated lands were taken during the field visit.

3 DUTY OF WATER (DIVERSION)

3.1 Wells

Wells were categorized according to water use based on field visits, water right records, and information received from owners. The following categories were used:

- Domestic – The duty of water for domestic wells is the historical beneficial use up to a maximum of 0.7 acre-feet per year.
- Livestock – The duty of water for stock wells is the estimated water use of livestock that could be or is actually sustained by the area served by the well. The water use of cattle was calculated based on the information prepared by State of New Mexico. The area of land in which the well is located was determined from property ownership maps and database obtained from Cibola Assessors office. Carrying capacity is based on the number of "animal units" that can be sustained on an area of land, with one cow or five sheep equivalent to one unit. The land carrying capacity, which is the number of animals that a habitat maintains in a healthy, vigorous condition, was assumed to be 15 animal units per section, or the count provided by the owner, whenever applicable. The 15 animal units per section estimate is based on information from the New Mexico Department of Agriculture. The water consumption of an animal unit is estimated at an average of 10 gallons/day (488 feet³ per year or 0.0112 acre-feet per year) (Wilson and Lucero, 1997). An efficiency factor of 0.5 was assumed to account for consumptive and other losses. As an illustrative example, if a stock well serves 1,280 acres (2 sections), the carrying capacity of this land is 30 animal units. The water duty will be 0.672 acre-feet per year. However, if the owner said that he has 15 head of cattle, the water duty for that well would then be 0.336 acre-feet per year. The water duty for post-basin livestock-only wells (wells that were drilled after March 14th, 1994) will be the historical beneficial use up to a maximum of 0.7 ac-ft if the calculated stock water duty is less than 0.7 ac-ft. If the latter is greater than 0.7 ac-ft, water duty will be the historical beneficial use up to that value.
- Domestic and Livestock - The duty of water for wells used for both domestic and stock use is the historical beneficial use up to a maximum of 0.7 acre-feet per year plus the stock

water duty. For example, the same above mentioned well would have a duty of $0.336 + 0.7$ = historical beneficial use up to a maximum of 1.036 ac-ft/year.

- Commercial/sanitary - The duty of water for wells used for these purposes will be given the default water duty of domestic wells.

3.2 Ponds

The duty of water for ponds is based on their capacities. The number of times a pond fills during a year is not estimated. The capacities of the ponds were determined using the following methodology:

Stock pond depths were estimated based on the high-water mark observed in the field. Visible pond boundaries were delineated in the office prior to the field visit. Second, the boundaries were verified /modified in the field and then they were brought into GIS for area calculations. The capacity of the stock pond was calculated by multiplying the depth times the area times a factor of 0.6 that accounts for the irregularity of the pond's geometry. The coordinates of the pond represent the location of the pond's center of gravity.

Priority dates for man-made stock ponds were obtained from owners declarations whenever available. In the case where owners did not declare their stock pond priority dates, the date of the aerial photo was set as the priority date of the pond.

3.3 Irrigated Lands

The duty of water for irrigated lands will be based on the crop water requirements and on the estimated irrigation efficiency. This duty remains to be determined.

4 FINDINGS OF THE HYDROGRAPHIC SURVEY

The findings of the Zuni River Basin Hydrographic survey of Sub-area 7 documented in this report are presented in two appendices. Appendix 1 lists the water uses that have been developed by man for beneficial use (wells, constructed stock ponds, irrigated lands). Appendix 2 lists naturally-occurring ponds that may be beneficially used (i.e. natural ponds). Documentation is presented in the form of sub-files, summaries of surveyed features, and maps. The information was prepared under the direction of Dr. Lee Niel Allen, a Licensed Professional Civil Engineer in the State of New Mexico.

4.1 Subfiles

Sub-files were created to identify the water right(s) of property owners within Sub-area 7. Each owner or group of co-owners having a water right is assigned a sub-file, identified by a number. The sub-file number is unique for each owner or group of co-owners. It starts with the letters ZRB (Zuni River Basin), and then the number “3”, indicating that this is the third hydrographic survey report in this adjudication process. The sub-file contains information about the surveyed water uses (stock ponds, wells, irrigated tracts, and springs). The total number of sub-files included in this report is 166. In Appendix 1, information about the features include owner name and address, water use (domestic, stock, etc.), type of feature (well, pond, or irrigated tract), water source and point of diversion, priority date, date of field visit, height of dam (if greater than 9 ft), estimated depth, area, and volume (for impoundments); and place and location of use (section, township, range, and coordinates). Naturally impounded water or springs that are contained within owner’s property does not require a water right, but can be beneficially used for stock water. Information about naturally occurring water (natural ponds) is contained in Appendix 2. No springs were found in sub-area 7.

4.2 Map Labels

The map labels contained on the maps and in the report summaries provide information concerning the type of water use feature and the location of the feature. The first number in the label is the sub-area number and the first three characters are the map plate number on which the feature is located. The label has an identification of the feature type (SP for a stock-pond, W for

a well, and IRR for an irrigated tract). For example, 7A-3-SP23 indicates that this is a stock pond in sub-area 7 located on map plate 7A-3. The last two numbers were assigned sequentially for every feature. Also shown on the map label is the sub-file number associated with the feature for easy reference in the survey report.

4.3 Office of State Engineer File Number

When applications for water uses have been filed to the State, the Office of the State Engineer assigns a file number to the water use feature. These file numbers are obtained from the WATERS database. For wells, the Office of the State Engineer file number begins with the letter G, indicating the Gallup Underground Water Basin. OSE file numbers associated with surveyed wells are shown in the Hydrographic Survey report.

4.4 Summary of Findings of the Hydrographic Survey

The features surveyed in this report include ponds (man-made and natural), wells and irrigated areas. There were three tracts of irrigated lands that were surveyed in sub-area 7, all belonging to the same sub-file. Two of these tracts (4.1 ac) had only non-fruit trees. The other tract (approximately 1 acre) was planted with miscellaneous vegetable crops. All of these tracts were irrigated from a domestic well using drip irrigation. Tables 4-1 and 4-2 show a summary of the findings of the survey, excluding the water features on federal and Indian lands, in Sub-area 7.

Table 4-1: Counts of Surveyed Wells and their Uses

Well Use	Count
Commercial Only	1
Domestic Only	113
Domestic and Livestock	11
Livestock Only	33
Sanitary & Commercial	3
Total	161

Table 4-2: Counts of Surveyed Ponds

Pond	Count
Man-made	225
Natural	287
Total	512

4.5 Disclaimer

This hydrographic survey report does not include information concerning the federal water claims including claims on behalf of Indian Tribes or allottees in Sub-area 7. This information will be filed with the court at a later date. While the United States, State of New Mexico, and Natural Resources Consulting Engineers, Inc. (consultant) make every effort to provide accurate and complete information, various data may change in the future. The United States, State of New Mexico, and Natural Resources Consulting Engineers, Inc. (consultant) provide no warranty, expressed or implied, as to the accuracy, reliability or completeness of information in the declarations submitted by landowners or the land-ownership information obtained from the Assessors Offices of Cibola, McKinley, or Catron County. The United States, the State of New Mexico, and Natural Resources Consulting Engineers, Inc. (consultant) reserve the right to update or change any the information in this hydrographic survey report.

5 REFERENCES

New Mexico Department of Agriculture. Online. Available <http://nmdaweb.nmsu.edu/links.html>.

Wilson, B. C. and Lucero, A.A. (1997). Water Use by Categories in New Mexico Counties and River Basins, and Irrigated Acreage in 1995. New Mexico State Engineer Office. Technical Report 49.

APPENDICES

Appendix 1

Zuni Basin Hydrographic Survey
Sub-area 7

Report of Water Right Findings

January 2006

Table of Contents

ZRB-3-0001	
7C-1-W09	1
7C-1-SP15	2
ZRB-3-0002	
7A-3-W03	3
7A-3-SP01	4
7A-3-SP02	5
ZRB-3-0003	
7A-8-SP21	6
7A-8-SP22	7
ZRB-3-0004	
7C-1-W24	8
ZRB-3-0005	
7A-3-W12	9
7A-3-SP08	10
ZRB-3-0006	
7A-3-W07	11
7A-3-SP07	12
ZRB-3-0007	
7C-1-W23	13
ZRB-3-0008	
7B-3-W21	14
ZRB-3-0009	
7B-1-W02	15
7B-1-SP34	16
7B-1-SP35	17
7B-1-SP36	18
7B-1-SP37	19
7B-1-SP38	20
7B-1-SP39	21
7B-1-SP40	22
7B-1-SP41	23
7B-2-SP14	24
7B-2-SP15	25
7B-2-SP16	26
7B-2-SP17	27

ZRB-3-0010	
7B-4-W08	28
ZRB-3-0011	
7B-1-W03	29
7C-2-W01	30
7C-2-W07	31
7B-1-SP30.....	32
7B-2-SP45.....	33
7C-2-SP02.....	34
7C-2-SP05.....	35
7C-2-SP24.....	36
7C-2-SP25.....	37
ZRB-3-0012	
7B-1-W01	38
7B-1-SP02.....	39
7B-1-SP03.....	40
7B-1-SP06.....	41
7B-1-SP18.....	42
7B-1-SP26.....	43
7B-1-SP42.....	44
ZRB-3-0013	
7B-2-W01	45
7B-2-W03	46
7B-1-SP43.....	47
7B-1-SP44.....	48
7B-2-SP18.....	49
7B-2-SP23.....	50
7B-2-SP24.....	51
7B-2-SP40.....	52
7B-2-SP54.....	53
7B-2-SP55.....	54
7B-2-SP56.....	55
7B-2-SP71.....	56
ZRB-3-0015	
7B-3-W42	57
7B-3-SP60.....	58
ZRB-3-0016	
7B-4-W02	59
ZRB-3-0017	
7A-6-W02	60

7B-6-W01	61
7B-8-W01	62
7A-6-SP27.....	63
7A-7-SP39.....	64
7A-7-SP40.....	65
7B-6-SP05.....	66
7B-6-SP36.....	67
7B-6-SP90.....	68
7B-7-SP14.....	69
7B-8-SP03.....	70
7B-8-SP15.....	71
ZRB-3-0018	
7B-3-W25	72
ZRB-3-0019	
7C-1-W26	73
7C-1-SP30.....	74
7C-1-SP31.....	75
ZRB-3-0020	
7A-4-W16	76
ZRB-3-0022	
7A-3-W17	77
7A-3-W18	78
ZRB-3-0023	
7A-3-W14	79
ZRB-3-0024	
7A-3-W16	80
ZRB-3-0025	
7A-3-W20	81
ZRB-3-0026	
7A-1-W01	82
7A-1-SP07.....	83
7A-1-SP08.....	84
7A-1-SP09.....	85
7A-1-SP10.....	86
7A-1-SP11.....	87
7A-1-SP12.....	88
7A-1-SP13.....	89

ZRB-3-0027	
7C-1-W19	90
ZRB-3-0028	
7A-3-W15	91
ZRB-3-0029	
7A-4-W22	92
7A-4-SP15.....	93
7A-4-SP16.....	94
7A-4-SP17.....	95
7A-4-SP18.....	96
7A-4-SP19.....	97
7A-4-SP20.....	98
ZRB-3-0030	
7A-4-W10	99
ZRB-3-0031	
7A-8-W01	100
7A-8-W02	101
7A-8-SP01.....	102
7A-8-SP02.....	103
ZRB-3-0032	
7B-3-W23	104
ZRB-3-0033	
7A-3-W04	105
ZRB-3-0034	
7C-3-SP51.....	106
ZRB-3-0035	
7B-4-SP05.....	107
ZRB-3-0036	
7B-3-W40	108
ZRB-3-0037	
7B-3-W44	109
ZRB-3-0038	
7B-3-SP43.....	110
ZRB-3-0039	

7B-4-W09	111
ZRB-3-0040	
7C-1-W16	112
ZRB-3-0041	
7B-3-SP36	113
ZRB-3-0042	
7B-4-W05	114
7B-4-SP04	115
ZRB-3-0044	
7B-3-W31	116
ZRB-3-0045	
7C-1-W12	117
7C-1-SP20	118
ZRB-3-0046	
7C-1-W08	119
7C-1-W10	120
7C-1-W14	121
7C-1-SP16	122
7C-1-SP23	123
ZRB-3-0047	
7C-1-W02	124
7C-1-W03	125
7C-1-SP02	126
7C-1-SP03	127
ZRB-3-0048	
7B-4-W07	128
ZRB-3-0049	
7A-4-W07	129
ZRB-3-0050	
7A-3-W08	130
ZRB-3-0051	
7B-4-W06	131
ZRB-3-0052	
7C-1-W11	132
7C-1-SP17	133

7C-1-SP18.....	134
ZRB-3-0053	
7A-2-SP21.....	135
7A-2-SP22.....	136
7A-2-SP23.....	137
7A-2-SP24.....	138
7A-2-SP25.....	139
7A-2-SP26.....	140
7A-2-SP27.....	141
7A-2-SP28.....	142
7A-5-SP13.....	143
ZRB-3-0054	
7A-4-W03	144
7A-4-SP09.....	145
7A-4-SP10.....	146
ZRB-3-0055	
7C-1-W13	147
7C-1-SP21.....	148
ZRB-3-0056	
7B-3-W38	149
7B-3-W41	150
7B-3-SP59.....	151
ZRB-3-0057	
7B-3-W14	152
ZRB-3-0058	
7B-3-W29	153
ZRB-3-0059	
7A-3-W02	154
ZRB-3-0060	
7B-3-W39	155
ZRB-3-0061	
7B-3-W01	156
ZRB-3-0062	
7C-1-W20	157
7C-1-W21	158
7C-1-SP24.....	159

ZRB-3-0063	
7B-3-SP44.....	160
ZRB-3-0064	
7A-3-W09.....	161
ZRB-3-0065	
7A-6-W01.....	162
7A-7-W06.....	163
7A-7-W07.....	164
7A-7-SP16.....	165
7A-7-SP63.....	166
7A-7-SP65.....	167
7A-7-SP66.....	168
7A-7-SP68.....	169
ZRB-3-0066	
7B-4-W04.....	170
ZRB-3-0067	
7C-1-W17.....	171
ZRB-3-0068	
7B-3-SP47.....	172
ZRB-3-0069	
7A-4-W11.....	173
ZRB-3-0070	
7B-3-W32.....	174
ZRB-3-0071	
7B-3-W28.....	175
7B-3-SP55.....	176
ZRB-3-0072	
7A-3-W11.....	177
ZRB-3-0073	
7A-4-W18.....	178
ZRB-3-0074	
7A-4-W15.....	179
ZRB-3-0075	
7B-3-W13.....	180

ZRB-3-0076	
7C-1-W25	181
ZRB-3-0077	
7B-2-W02	182
7B-2-SP31.....	183
7B-2-SP32.....	184
7B-2-SP33.....	185
7B-2-SP34.....	186
ZRB-3-0078	
7A-4-W21	187
ZRB-3-0079	
7A-8-W08	188
7A-8-SP25.....	189
ZRB-3-0080	
7B-3-W20	190
ZRB-3-0081	
7A-4-W04	191
ZRB-3-0082	
7C-1-SP13.....	192
ZRB-3-0083	
7A-7-W05	193
7A-7-SP48.....	194
7A-7-SP49.....	195
ZRB-3-0084	
7B-4-W01	196
ZRB-3-0085	
7B-3-W34	197
7B-3-W36	198
7B-3-SP56.....	199
7B-3-SP57.....	200
ZRB-3-0086	
7A-8-W03	201
7A-8-SP16.....	202
7A-8-SP17.....	203

ZRB-3-0087	
7A-3-W01	204
ZRB-3-0088	
7B-3-W15	205
ZRB-3-0089	
7A-8-SP18.....	206
ZRB-3-0090	
7C-1-W04	207
7C-1-W05	208
7C-1-SP10.....	209
7C-1-SP11.....	210
ZRB-3-0091	
7C-1-W18	211
ZRB-3-0092	
7A-2-W02	212
7A-2-SP12.....	213
ZRB-3-0093	
7C-1-W07	214
ZRB-3-0094	
7C-2-W06	215
7C-2-SP20.....	216
7C-2-SP22.....	217
ZRB-3-0095	
7B-3-W33	218
ZRB-3-0096	
7C-1-W27	219
7C-1-W28	220
7C-1-SP25.....	221
7C-1-SP27.....	222
7C-1-SP28.....	223
7C-1-SP29.....	224
ZRB-3-0097	
7A-1-W02	225
7A-1-SP04.....	226
7A-1-SP05.....	227
7A-1-SP06.....	228

ZRB-3-0098	
7A-4-W17	229
7A-4-SP13.....	230
ZRB-3-0099	
7A-4-W01	231
ZRB-3-0100	
7B-3-W17	232
ZRB-3-0101	
7A-8-W09	233
ZRB-3-0103	
7C-3-W05	234
7C-3-SP50.....	235
ZRB-3-0104	
7B-3-W07	236
7B-3-SP35.....	237
ZRB-3-0105	
7B-3-W24	238
ZRB-3-0106	
7A-4-W14	239
ZRB-3-0108	
7A-4-W06	240
7B-4-SP01.....	241
ZRB-3-0109	
7C-1-W01	242
7C-1-SP01.....	243
ZRB-3-0110	
7B-3-SP58.....	244
ZRB-3-0111	
7C-1-W22	245
ZRB-3-0112	
7A-2-W01	246
7A-2-SP05.....	247
7A-2-SP06.....	248

7A-2-SP07.....	249
7A-2-SP08.....	250
7A-2-SP09.....	251
7A-2-SP10.....	252
7A-2-SP11.....	253
ZRB-3-0113	
7B-3-SP40.....	254
ZRB-3-0114	
7B-3-W26	255
ZRB-3-0115	
7B-4-W10	256
ZRB-3-0116	
7B-3-SP46.....	257
ZRB-3-0117	
7A-4-W13	258
ZRB-3-0118	
7B-3-W12	259
ZRB-3-0121	
7A-3-W19	260
7A-4-SP07.....	261
7A-4-SP08.....	262
ZRB-3-0122	
7B-2-SP67.....	263
7B-2-SP68.....	264
7B-2-SP69.....	265
ZRB-3-0123	
7A-7-W01	266
7A-2-SP01.....	267
7A-2-SP02.....	268
7A-2-SP03.....	269
7A-2-SP04.....	270
7A-3-SP06.....	271
7A-5-SP05.....	272
7A-5-SP19.....	273
7A-5-SP20.....	274
7A-7-SP27.....	275
7A-7-SP28.....	276

7B-2-SP30.....	277
7B-2-SP70.....	278
7B-2-SP72.....	279
7B-3-SP01.....	280
7B-3-SP02.....	281
7B-3-SP03.....	282
7B-3-SP04.....	283
7B-3-SP52.....	284
7B-3-SP53.....	285
7B-3-SP54.....	286
7B-4-SP15.....	287
7B-4-SP16.....	288
7B-4-SP17.....	289
7B-4-SP18.....	290
7B-4-SP19.....	291
7B-4-SP28.....	292
7B-5-SP17.....	293
7B-5-SP70.....	294
7B-7-SP27.....	295
7B-7-SP30.....	296
7B-7-SP31.....	297
7B-7-SP32.....	298
7C-2-SP43.....	299
7C-4-SP43.....	300
7C-4-SP55.....	301
7C-5-SP14.....	302
7C-5-SP15.....	303

ZRB-3-0124

7A-3-W06.....	304
---------------	-----

ZRB-3-0125

7A-7-W02.....	305
7A-7-W03.....	306
7A-7-W04.....	307
7A-7-SP05.....	308
7A-7-SP06.....	309
7A-7-SP07.....	310
7A-7-SP08.....	311
7A-7-SP09.....	312
7A-7-SP31.....	313
7A-7-SP32.....	314
7A-7-SP33.....	315
7A-7-SP34.....	316
7A-7-SP35.....	317
7A-7-SP36.....	318

7A-7-SP44.....	319
7A-7-SP47.....	320
ZRB-3-0126	
7B-3-W10	321
ZRB-3-0127	
7A-3-W13	322
ZRB-3-0128	
7B-3-W02	323
ZRB-3-0129	
7A-3-SP09.....	324
7A-3-SP10.....	325
ZRB-3-0130	
7B-3-W37	326
ZRB-3-0131	
7B-3-W43	327
ZRB-3-0132	
7B-3-SP08.....	328
7B-3-SP09.....	329
ZRB-3-0133	
7A-3-W05	330
7A-3-SP03.....	331
7A-3-SP04.....	332
7A-3-SP05.....	333
ZRB-3-0134	
7A-4-SP14.....	334
ZRB-3-0136	
7B-3-W11	335
ZRB-3-0137	
7A-4-W12	336
7A-4-SP06.....	337
ZRB-3-0138	
7B-3-W09	338
ZRB-3-0139	

7A-8-W07	339
7A-8-SP23.....	340
7A-8-IRR01	341
7A-8-IRR02	342
7A-8-IRR03	343
ZRB-3-0140	
7B-3-SP06.....	344
ZRB-3-0141	
7A-3-W21	345
ZRB-3-0142	
7B-3-W18	346
ZRB-3-0143	
7C-1-W15	347
7C-1-SP22.....	348
ZRB-3-0144	
7B-4-SP03.....	349
ZRB-3-0145	
7A-4-W08	350
7B-3-SP05.....	351
7B-3-SP07.....	352
ZRB-3-0146	
7A-3-W10	353
ZRB-3-0147	
7A-8-W04	354
7A-8-W05	355
7A-8-W06	356
7A-8-SP19.....	357
ZRB-3-0148	
7B-3-W16	358
7B-3-W48	359
ZRB-3-0149	
7B-3-W19	360
7B-3-SP45.....	361
ZRB-3-0150	
7B-3-W27	362

7B-3-SP48.....	363
ZRB-3-0151	
7B-3-W03	364
7B-3-W04	365
ZRB-3-0152	
7B-3-SP10.....	366
ZRB-3-0153	
7B-3-W45	367
ZRB-3-0154	
7B-4-SP02.....	368
ZRB-3-0155	
7B-2-SP49.....	369
7B-2-SP50.....	370
7B-2-SP51.....	371
7B-2-SP52.....	372
7B-2-SP53.....	373
ZRB-3-0156	
7A-4-W02	374
ZRB-3-0157	
7B-8-SP18.....	375
ZRB-3-0158	
7B-3-W22	376
ZRB-3-0159	
7A-4-W09	377
ZRB-3-0160	
7C-1-W06	378
ZRB-3-0163	
7A-4-W05	379
ZRB-3-0164	
7B-3-W08	380
ZRB-3-0165	
7A-4-W20	381
7B-3-W35	382

ZRB-3-0166	
7B-3-W46	383
ZRB-3-0167	
7A-4-W19	384
ZRB-3-0168	
7B-4-W03	385
ZRB-3-0169	
7A-3-SP11.....	386
7A-3-SP12.....	387
ZRB-3-0170	
7B-3-W30	388
ZRB-3-0171	
7B-3-W49	389

Appendix 2

Zuni Basin Hydrographic Survey
Sub-area 7

Report of Natural Ponds

January 2006

Table of Contents

ZRB-3-0011

7B-1-SP31.....	1
7B-1-SP32.....	1
7B-1-SP33.....	1
7B-1-SP45.....	2
7B-1-SP46.....	2
7C-2-SP01.....	2
7C-2-SP03.....	3
7C-2-SP04.....	3
7C-2-SP06.....	3

ZRB-3-0012

7B-1-SP04.....	4
7B-1-SP05.....	4
7B-1-SP07.....	4
7B-1-SP08.....	5
7B-1-SP09.....	5
7B-1-SP10.....	5
7B-1-SP11.....	6
7B-1-SP19.....	6
7B-1-SP20.....	6
7B-1-SP21.....	7
7B-1-SP22.....	7
7B-1-SP23.....	7
7B-1-SP24.....	8
7B-1-SP25.....	8

ZRB-3-0014

7B-1-SP12.....	8
7B-1-SP13.....	9
7B-1-SP14.....	9
7B-1-SP15.....	9
7B-1-SP16.....	10
7B-1-SP17.....	10

ZRB-3-0017

7A-6-SP01.....	10
7A-6-SP04.....	11
7A-6-SP05.....	11
7A-6-SP06.....	11
7A-6-SP07.....	12
7A-6-SP08.....	12
7A-6-SP09.....	12
7A-6-SP10.....	13

7A-6-SP11.....	13
7A-6-SP12.....	13
7A-6-SP13.....	14
7A-6-SP14.....	14
7A-6-SP15.....	14
7A-6-SP16.....	15
7A-6-SP22.....	15
7A-6-SP23.....	15
7A-6-SP24.....	16
7A-6-SP25.....	16
7A-6-SP26.....	16
7A-6-SP28.....	17
7A-6-SP29.....	17
7A-6-SP30.....	17
7A-6-SP31.....	18
7A-7-SP01.....	18
7A-7-SP02.....	18
7A-7-SP03.....	19
7A-7-SP04.....	19
7A-7-SP10.....	19
7A-7-SP11.....	20
7A-7-SP12.....	20
7A-7-SP13.....	20
7A-7-SP14.....	21
7A-7-SP15.....	21
7A-7-SP38.....	21
7A-7-SP58.....	22
7A-7-SP59.....	22
7A-7-SP60.....	22
7A-8-SP06.....	23
7A-8-SP07.....	23
7A-8-SP08.....	23
7A-8-SP09.....	24
7A-8-SP10.....	24
7A-8-SP11.....	24
7A-8-SP12.....	25
7A-8-SP13.....	25
7A-8-SP14.....	25
7A-8-SP15.....	26
7B-5-SP71.....	26
7B-5-SP72.....	26
7B-5-SP73.....	27
7B-5-SP74.....	27
7B-6-SP03.....	27
7B-6-SP04.....	28
7B-6-SP06.....	28

7B-6-SP07.....	28
7B-6-SP08.....	29
7B-6-SP09.....	29
7B-6-SP10.....	29
7B-6-SP11.....	30
7B-6-SP18.....	30
7B-6-SP19.....	30
7B-6-SP20.....	31
7B-6-SP21.....	31
7B-6-SP22.....	31
7B-6-SP23.....	32
7B-6-SP24.....	32
7B-6-SP25.....	32
7B-6-SP31.....	33
7B-6-SP32.....	33
7B-6-SP33.....	33
7B-6-SP34.....	34
7B-6-SP35.....	34
7B-6-SP37.....	34
7B-6-SP38.....	35
7B-6-SP39.....	35
7B-6-SP40.....	35
7B-6-SP41.....	36
7B-6-SP42.....	36
7B-6-SP43.....	36
7B-6-SP44.....	37
7B-6-SP45.....	37
7B-6-SP46.....	37
7B-6-SP47.....	38
7B-6-SP48.....	38
7B-6-SP49.....	38
7B-6-SP50.....	39
7B-6-SP51.....	39
7B-6-SP52.....	39
7B-6-SP53.....	40
7B-6-SP54.....	40
7B-6-SP55.....	40
7B-6-SP56.....	41
7B-6-SP57.....	41
7B-6-SP58.....	41
7B-6-SP59.....	42
7B-6-SP60.....	42
7B-6-SP61.....	42
7B-6-SP62.....	43
7B-6-SP72.....	43
7B-6-SP73.....	43

7B-6-SP74.....	44
7B-6-SP75.....	44
7B-6-SP76.....	44
7B-6-SP77.....	45
7B-6-SP78.....	45
7B-6-SP79.....	45
7B-6-SP80.....	46
7B-6-SP81.....	46
7B-6-SP82.....	46
7B-6-SP83.....	47
7B-6-SP84.....	47
7B-6-SP85.....	47
7B-6-SP87.....	48
7B-6-SP88.....	48
7B-6-SP89.....	48
7B-7-SP01.....	49
7B-7-SP02.....	49
7B-7-SP03.....	49
7B-7-SP04.....	50
7B-7-SP05.....	50
7B-7-SP06.....	50
7B-7-SP07.....	51
7B-7-SP08.....	51
7B-7-SP09.....	51
7B-7-SP10.....	52
7B-7-SP11.....	52
7B-7-SP12.....	52
7B-7-SP13.....	53
7B-7-SP15.....	53
7B-7-SP16.....	53
7B-7-SP17.....	54
7B-7-SP18.....	54
7B-7-SP19.....	54
7B-7-SP20.....	55
7B-7-SP21.....	55
7B-7-SP22.....	55
7B-7-SP23.....	56
7B-7-SP24.....	56
7B-7-SP35.....	56
7B-7-SP36.....	57
7B-7-SP37.....	57
7B-7-SP38.....	57
7B-7-SP39.....	58
7B-7-SP40.....	58
7B-7-SP41.....	58
7B-7-SP42.....	59

7B-7-SP43.....	59
7B-7-SP44.....	59
7B-8-SP11.....	60
7B-8-SP12.....	60
7B-8-SP13.....	60
7B-8-SP14.....	61
7B-8-SP16.....	61
7B-8-SP17.....	61
7C-6-SP03.....	62
ZRB-3-0043	
7A-8-SP20.....	62
ZRB-3-0047	
7C-1-SP07.....	62
7C-1-SP08.....	63
ZRB-3-0052	
7C-1-SP19.....	63
ZRB-3-0065	
7A-7-SP17.....	63
7A-7-SP18.....	64
7A-7-SP19.....	64
7A-7-SP20.....	64
7A-7-SP64.....	65
7A-7-SP67.....	65
7A-7-SP69.....	65
ZRB-3-0077	
7B-2-SP35.....	66
ZRB-3-0082	
7C-1-SP14.....	66
ZRB-3-0083	
7A-7-SP50.....	66
7A-7-SP61.....	67
7A-7-SP62.....	67
ZRB-3-0090	
7C-1-SP12.....	67
ZRB-3-0094	
7C-2-SP21.....	68
7C-2-SP23.....	68

7C-2-SP26.....	68
7C-2-SP27.....	69
7C-2-SP28.....	69
7C-2-SP29.....	69
ZRB-3-0096	
7C-1-SP26.....	70
ZRB-3-0102	
7C-1-SP09.....	70
ZRB-3-0123	
7A-6-SP17.....	70
7A-6-SP18.....	71
7A-6-SP19.....	71
7A-6-SP20.....	71
7A-6-SP21.....	72
7A-7-SP21.....	72
7A-7-SP22.....	72
7A-7-SP23.....	73
7A-7-SP24.....	73
7A-7-SP25.....	73
7A-7-SP26.....	74
7A-7-SP29.....	74
7A-7-SP30.....	74
7A-7-SP51.....	75
7A-7-SP52.....	75
7A-7-SP70.....	75
7A-7-SP71.....	76
7A-8-SP03.....	76
7A-8-SP04.....	76
7A-8-SP05.....	77
7B-2-SP25.....	77
7B-2-SP26.....	77
7B-2-SP27.....	78
7B-2-SP28.....	78
7B-2-SP29.....	78
7B-4-SP29.....	79
7B-5-SP14.....	79
7B-5-SP15.....	79
7B-5-SP16.....	80
7B-5-SP65.....	80
7B-5-SP66.....	80
7B-5-SP67.....	81
7B-5-SP69.....	81
7B-6-SP02.....	81

7B-6-SP12.....	82
7B-6-SP63.....	82
7B-6-SP64.....	82
7B-6-SP65.....	83
7B-6-SP66.....	83
7B-6-SP67.....	83
7B-6-SP68.....	84
7B-6-SP69.....	84
7B-6-SP70.....	84
7B-6-SP71.....	85
7B-6-SP86.....	85
7B-7-SP25.....	85
7B-7-SP26.....	86
7B-7-SP28.....	86
7B-7-SP29.....	86
7B-7-SP33.....	87
7B-7-SP34.....	87
7B-8-SP01.....	87
7B-8-SP02.....	88
7B-8-SP04.....	88
7B-8-SP05.....	88
7B-8-SP06.....	89
7B-8-SP07.....	89
7B-8-SP08.....	89
7B-8-SP09.....	90
7B-8-SP10.....	90
7C-1-SP04.....	90
7C-1-SP05.....	91
7C-1-SP06.....	91
7C-2-SP41.....	91
7C-2-SP42.....	92
7C-4-SP40.....	92
7C-4-SP41.....	92
7C-4-SP42.....	93
7C-4-SP56.....	93
7C-4-SP57.....	93
7C-4-SP58.....	94

ZRB-3-0125

7A-7-SP37.....	94
7A-7-SP41.....	94
7A-7-SP42.....	95
7A-7-SP43.....	95
7A-7-SP45.....	95
7A-7-SP46.....	96

ZRB-3-0139

7A-8-SP24.....96