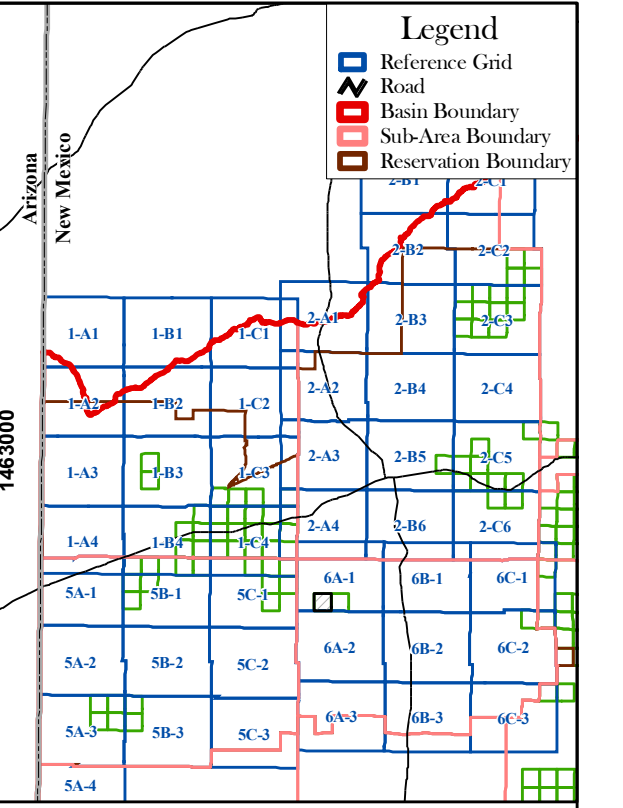
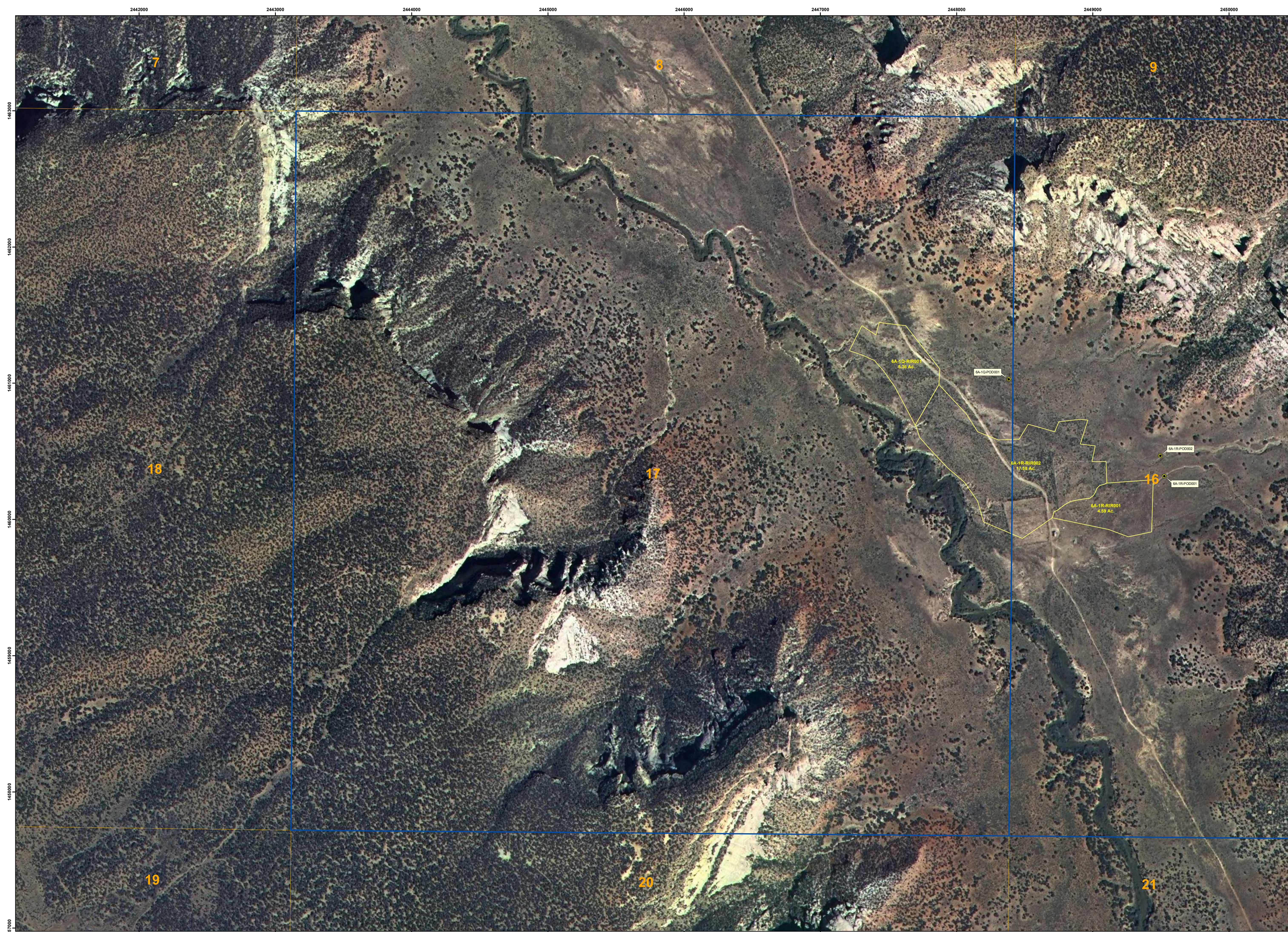


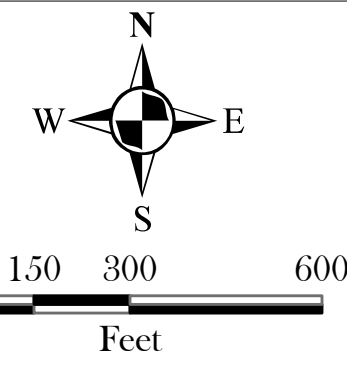
2442000 2443000 2444000 2445000 2446000 2447000 2448000 2449000 2450000

2442000 2443000 2444000 2445000 2446000 2447000 2448000 2449000 2450000



INDEX

- LEGEND**
- POINT OF DIVERSION (RUNOFF)
 - POINT OF DIVERSION
 - SPRING
 - IRRIGATION PIPELINE
 - IRRIGATION CANAL
 - STOCKPOND (MAN-MADE)
 - RESERVOIR
 - IRRIGATION PROJECT ACREAGE
 - NON-PROJECT ACREAGE
 - RESERVATION BOUNDARY
 - SUB-AREA BOUNDARY
 - TOWNSHIP/RANGE LINE
 - SECTION LINE
 - MAP INDEX LINE



March 2007

Labels that are truncated appear on an adjacent map.

Map is displayed in New Mexico State Plane Coordinate System, West Zone, NAD 1983.

Background Sources:

Aerial photography exposed July, 2001 by New Mexico Aerial Surveys, Inc. of Albuquerque, New Mexico.

Digital Orthophoto Quarter-Quadrangles were produced by the New Mexico Geospatial Data Acquisition Coordination Committee (2005)


Section, Township, and Range lines originated from the Bureau of Land Management's (BLM) Geographic Coordinate Data Base (GCDB), received from EnviroLogic, Inc.

Township: 9 North Range: 18 West

Zuni River Basin Hydrographic Survey
Irrigated Acreage - Zuni Indian Reservation
Map 6A-1Q 1" = 300'

Natural Resources Consulting Engineers, Inc.
 Fort Collins, CO Oakland, CA Astoria, OREGON

Project Manager:
 L. Niel Allen, P.E., Ph.D.



1463000
1462000
1461000
1460000
1459000
1458000
1457000

1463000
1462000
1461000
1460000
1459000
1458000
1457000