

April 2020

Labels that are truncated appear on an adjacent map.

Map Projection:
NAD 1983 StatePlane New Mexico West FIPS 3003 Feet

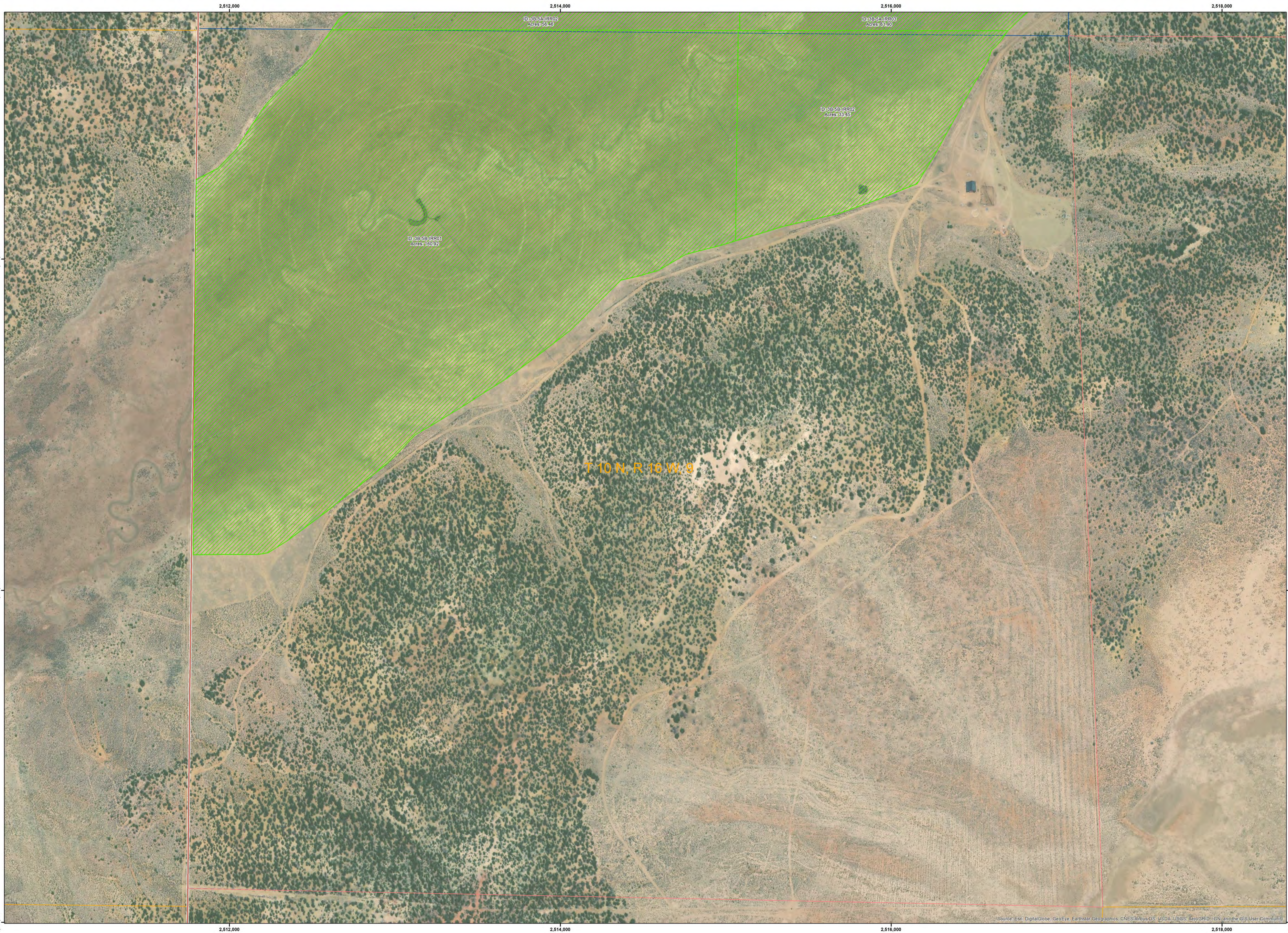
Background Sources:
ArcGIS Online World Imagery (NAIP)

Section, Township, and Range lines originated from the Bureau of Land Management's (BLM) Geographic Coordinate Data Base (GCDB), received from EnviroLogic, Inc.

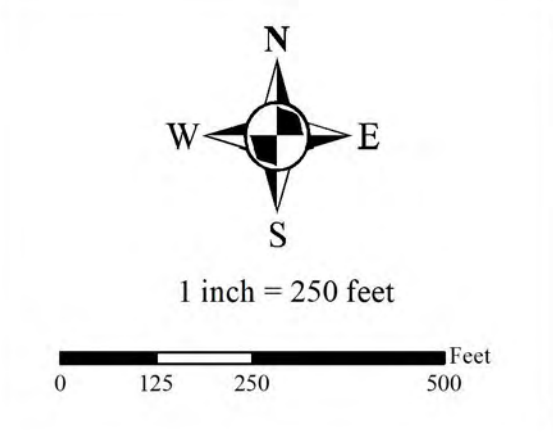
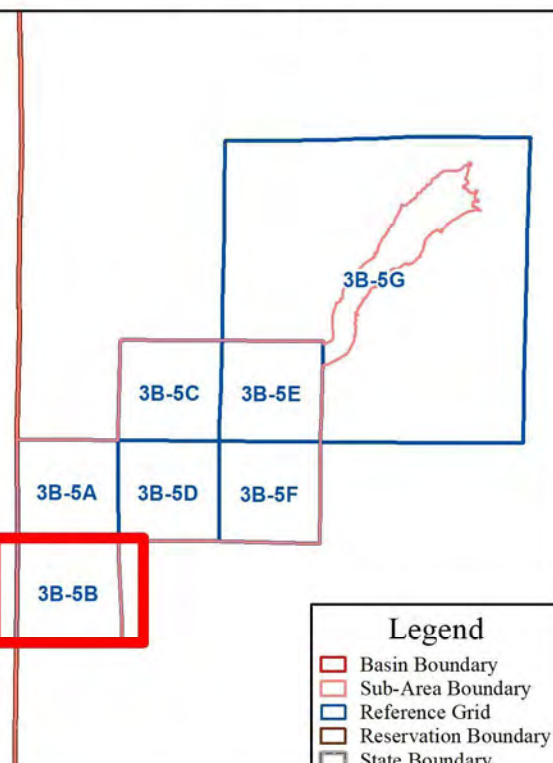
Reservation boundary lines were obtained from EnviroLogic, Inc.

Zuni River Basin Hydrographic Survey
 Sub-Area Ramah; Subfile Number: ZRB-5-0065
 PLSS: T10N, R16W, Sec4; Map: 3B-5A

Natural Resources Consulting Engineers, Inc.
 Fort Collins, CO Oakland, CA Asmara, ERITREA



INDEX

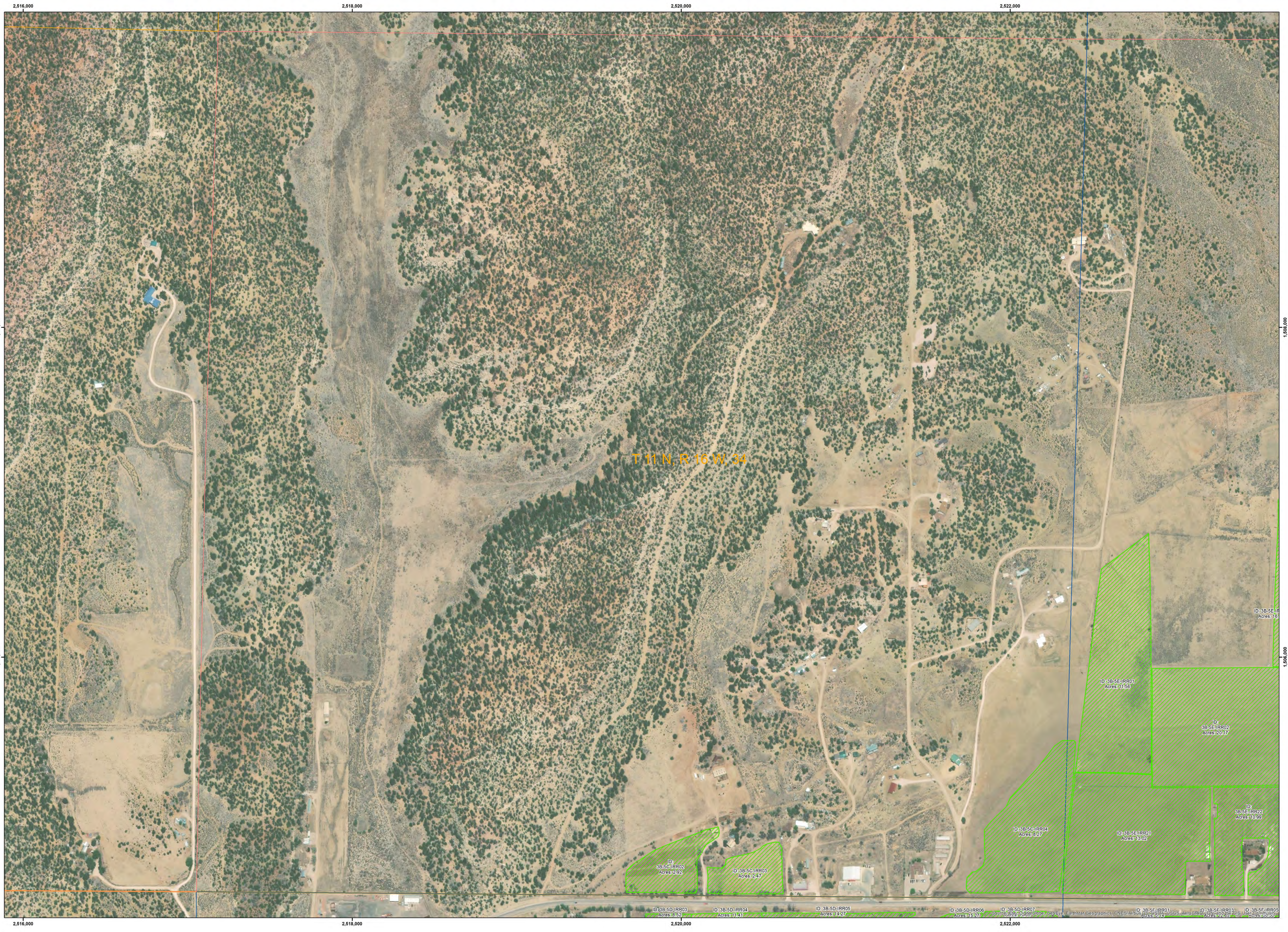


April 2020

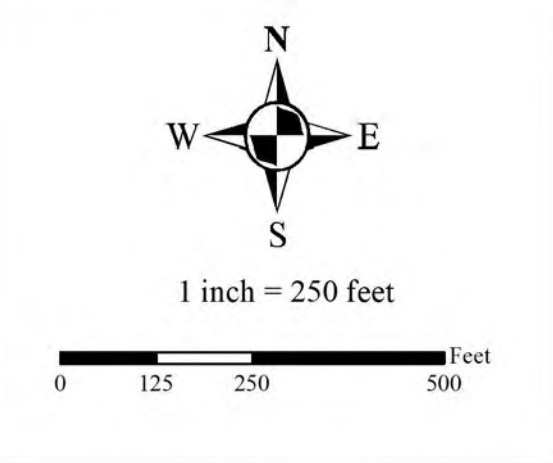
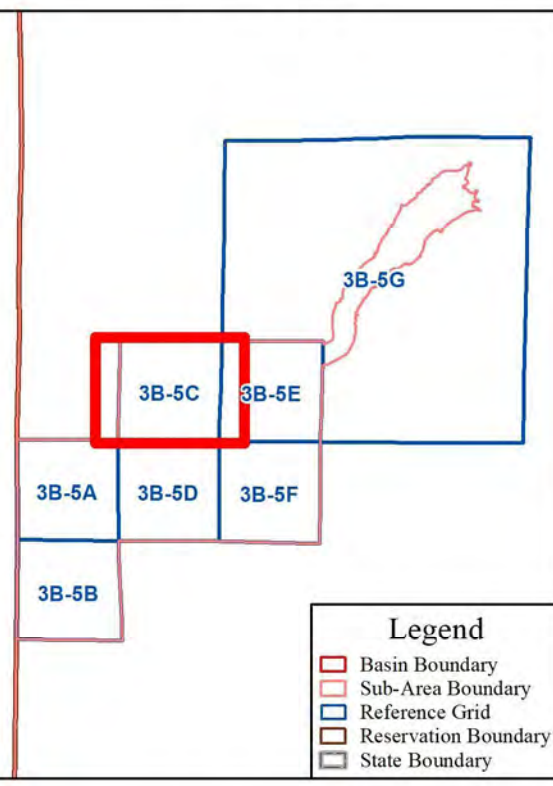
Labels that are truncated appear on an adjacent map.
 Map Projection:
 NAD 1983 StatePlane New Mexico West FIPS 3003 Feet
 Background Sources:
 ArcGIS Online World Imagery (NAIP)
 Section, Township, and Range lines originated from the Bureau of Land Management's (BLM) Geographic Coordinate Data Base (GCDB), received from EnviroLogic, Inc.
 Reservation boundary lines were obtained from EnviroLogic, Inc.

Zuni River Basin Hydrographic Survey
 Sub-Area Ramah; Subfile Number: ZRB-5-0065
 PLSS: T10N, R16W, Sec9; Map: 3B-5B

NRCE
 Natural Resources Consulting Engineers, Inc.
 Fort Collins, CO Oakland, CA Asmara, ERITREA



INDEX



April 2020

Labels that are truncated appear on an adjacent map.

Map Projection:
NAD 1983 StatePlane New Mexico West FIPS 3003 Feet

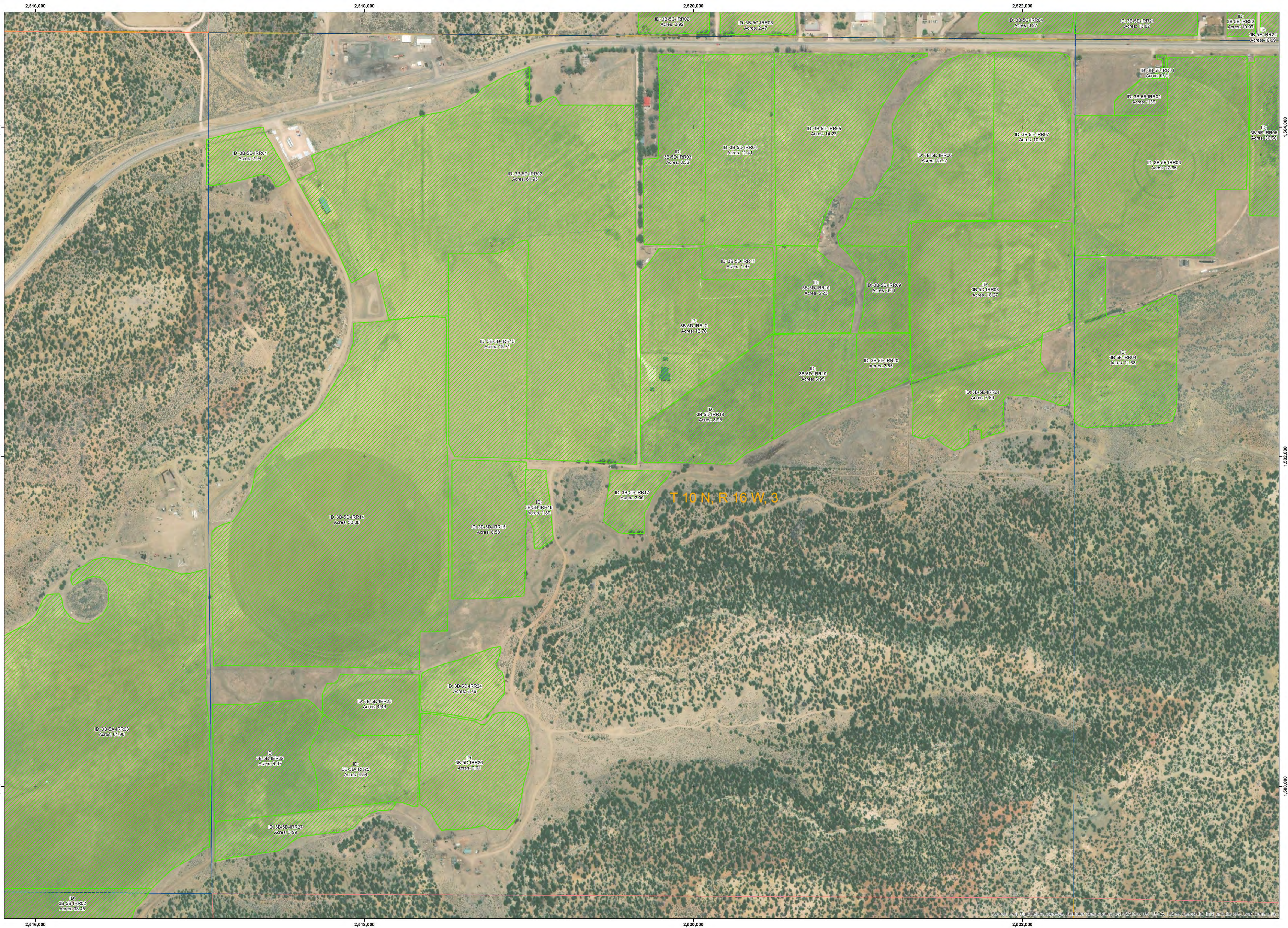
Background Sources:
ArcGIS Online World Imagery (NAIP)

Section, Township, and Range lines originated from the Bureau of Land Management's (BLM) Geographic Coordinate Data Base (GCSDB), received from EnviroLogic, Inc.

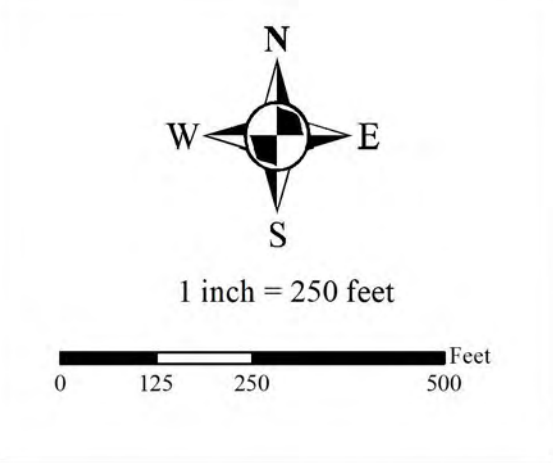
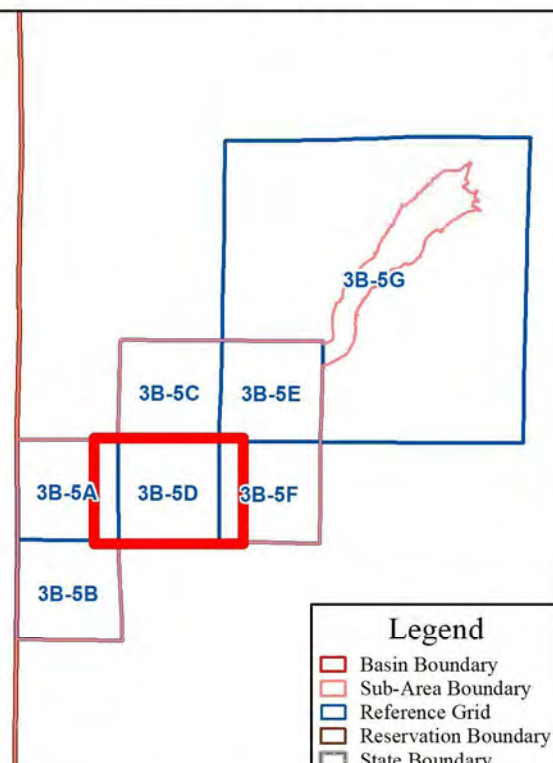
Reservation boundary lines were obtained from EnviroLogic, Inc.

Zuni River Basin Hydrographic Survey
 Sub-Area Ramah; Subfile Number: ZRB-5-0065
 PLSS: T11N, R16W, Sec34; Map: 3B-5C

Natural Resources Consulting Engineers, Inc.
 Fort Collins, CO Oakland, CA Asmara, ERITREA



INDEX



April 2020

Labels that are truncated appear on an adjacent map.

Map Projection:
NAD 1983 StatePlane New Mexico West FIPS 3003 Feet

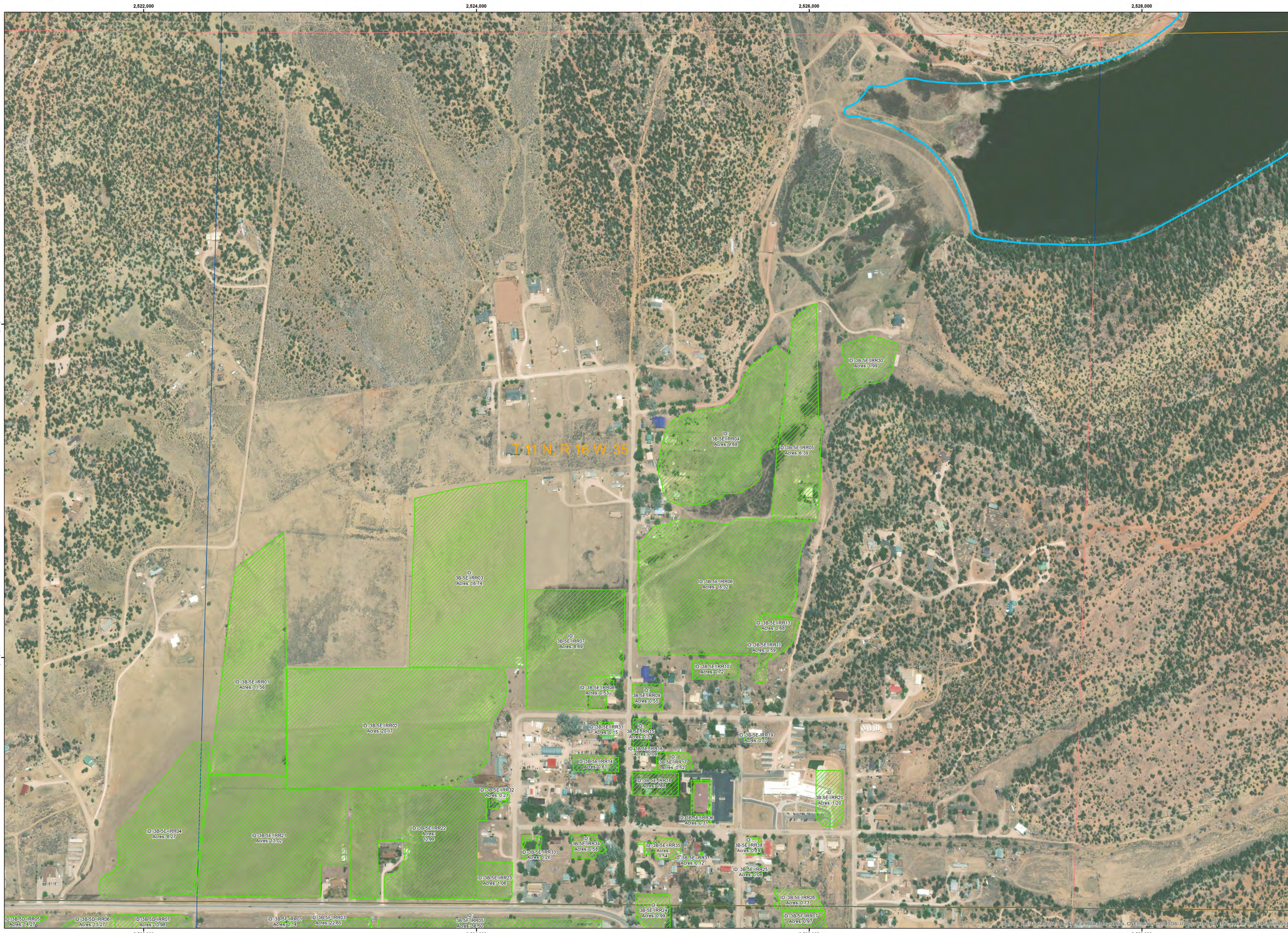
Background Sources:
ArcGIS Online World Imagery (NAIP)

Section, Township, and Range lines originated from the Bureau of Land Management's (BLM) Geographic Coordinate Data Base (Gcdb), received from EnviroLogic, Inc.

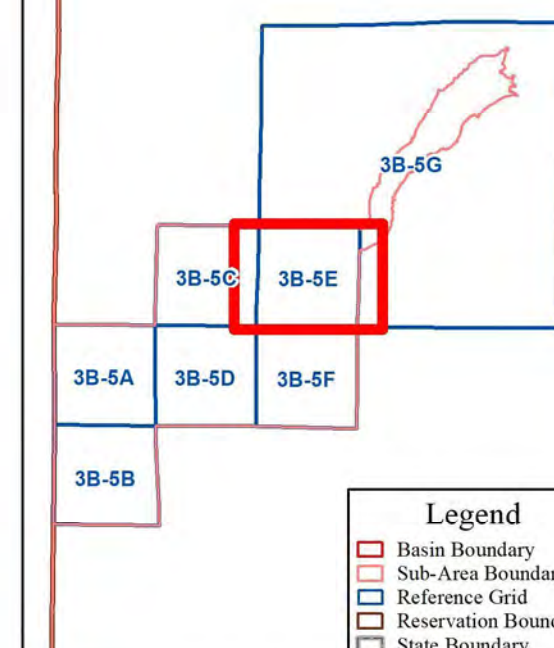
Reservation boundary lines were obtained from EnviroLogic, Inc.

Zuni River Basin Hydrographic Survey
 Sub-Area Ramah; Subfile Number: ZRB-5-0065
 PLSS: T10N, R16W, Sec3; Map: 3B-5D

Natural Resources Consulting Engineers, Inc.
 Fort Collins, CO Oakland, CA Asmara, ERITREA



INDEX

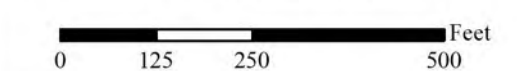


LEGEND

- STOCKPOND (MAN-MADE)
- POND (NATURAL)
- SEPTIC TANK
- RESERVOIR
- IRRIGATED LAND
- RESERVATION BOUNDARY
- BASIN BOUNDARY
- SUB-AREA BOUNDARY
- TOWNSHIP/RANGE LINE
- SECTION LINE
- MAP INDEX LINE
- STATE BOUNDARY



1 inch = 250 feet



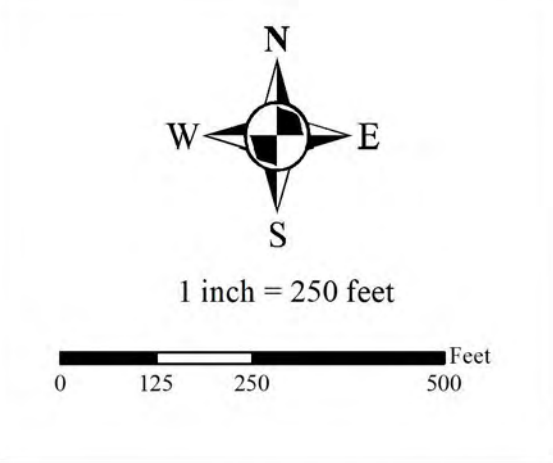
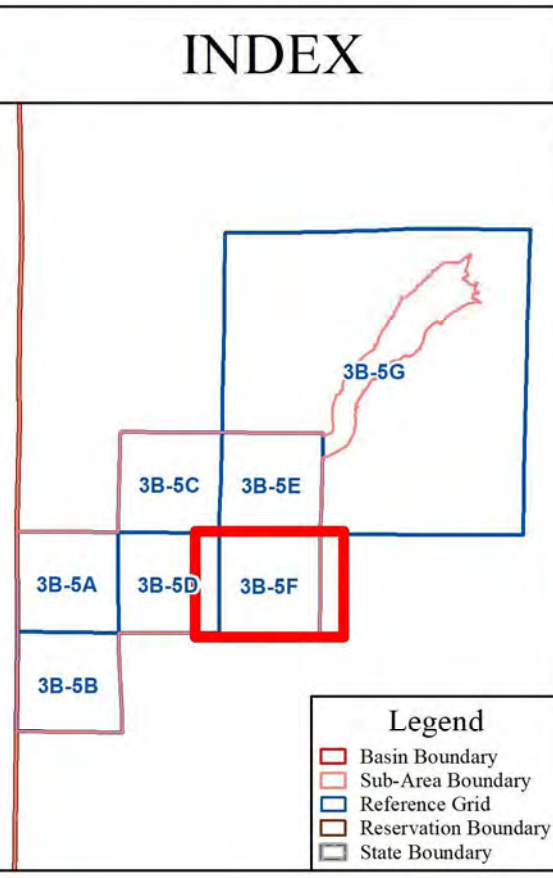
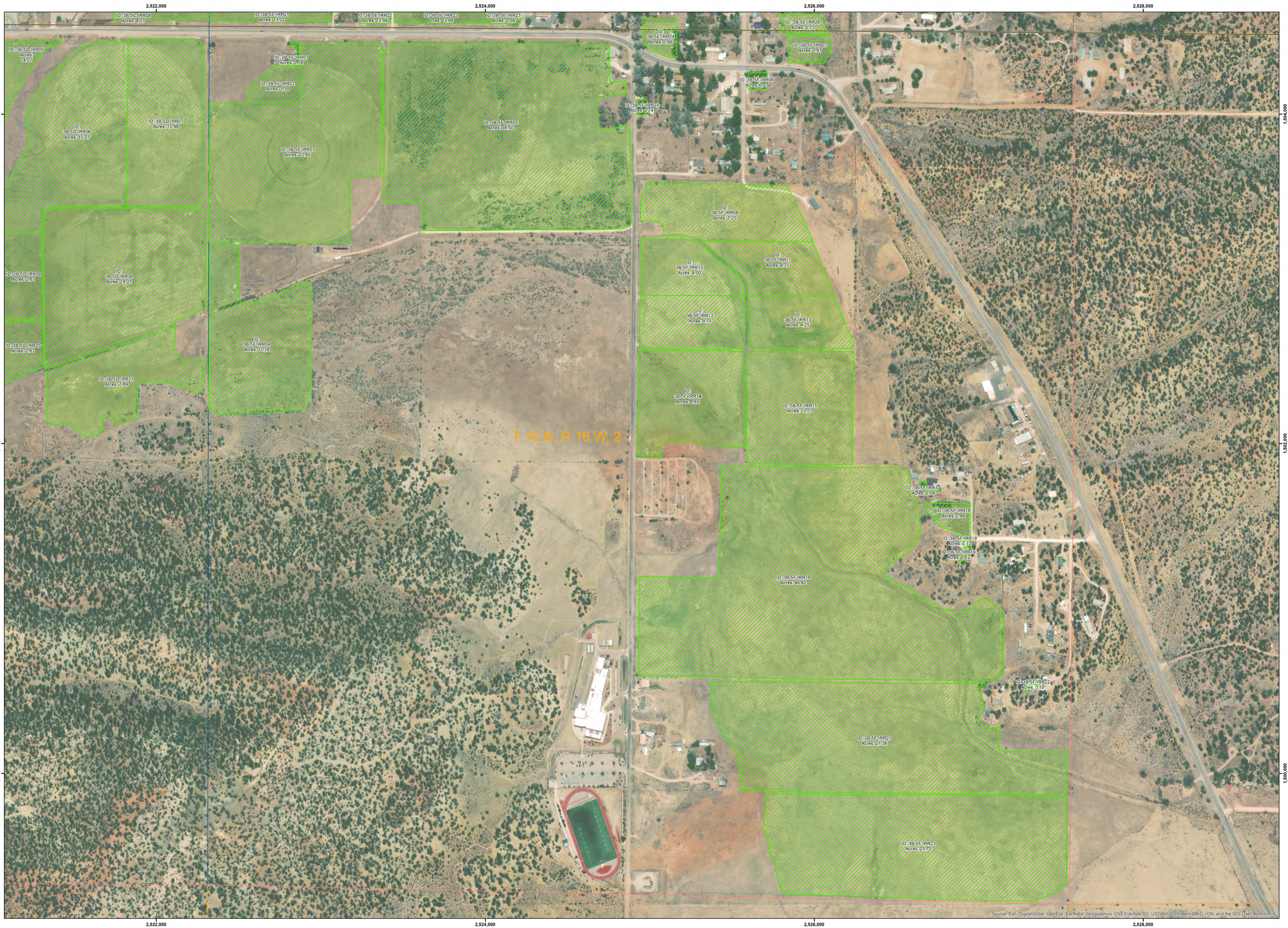
April 2020

Labels that are truncated appear on an adjacent map.
 Map Projection:
 NAD 1983 StatePlane New Mexico West FIPS 3003 Feet
 Background Sources:
 ArcGIS Online World Imagery (NAIP)
 Section, Township, and Range lines originated from the Bureau of Land Management's (BLM) Geographic Coordinate Data Base (GCDB), received from EnviroLogis, Inc.
 Reservation boundary lines were obtained from EnviroLogis, Inc.

Zuni River Basin Hydrographic Survey
 Sub-Area Ramah; Subfile Number: ZRB-5-0065
 PLSS: T11N, R16W, Sec35; Map: 3B-5E

NRCE
 Natural Resources Consulting Engineers, Inc.
 Fort Collins, CO Oakland, CA Asmara, ERITREA





April 2020

Labels that are truncated appear on an adjacent map.

Map Projection:
NAD 1983 StatePlane New Mexico West FIPS 3003 Feet

Background Sources:
ArcGIS Online World Imagery (NAIP)

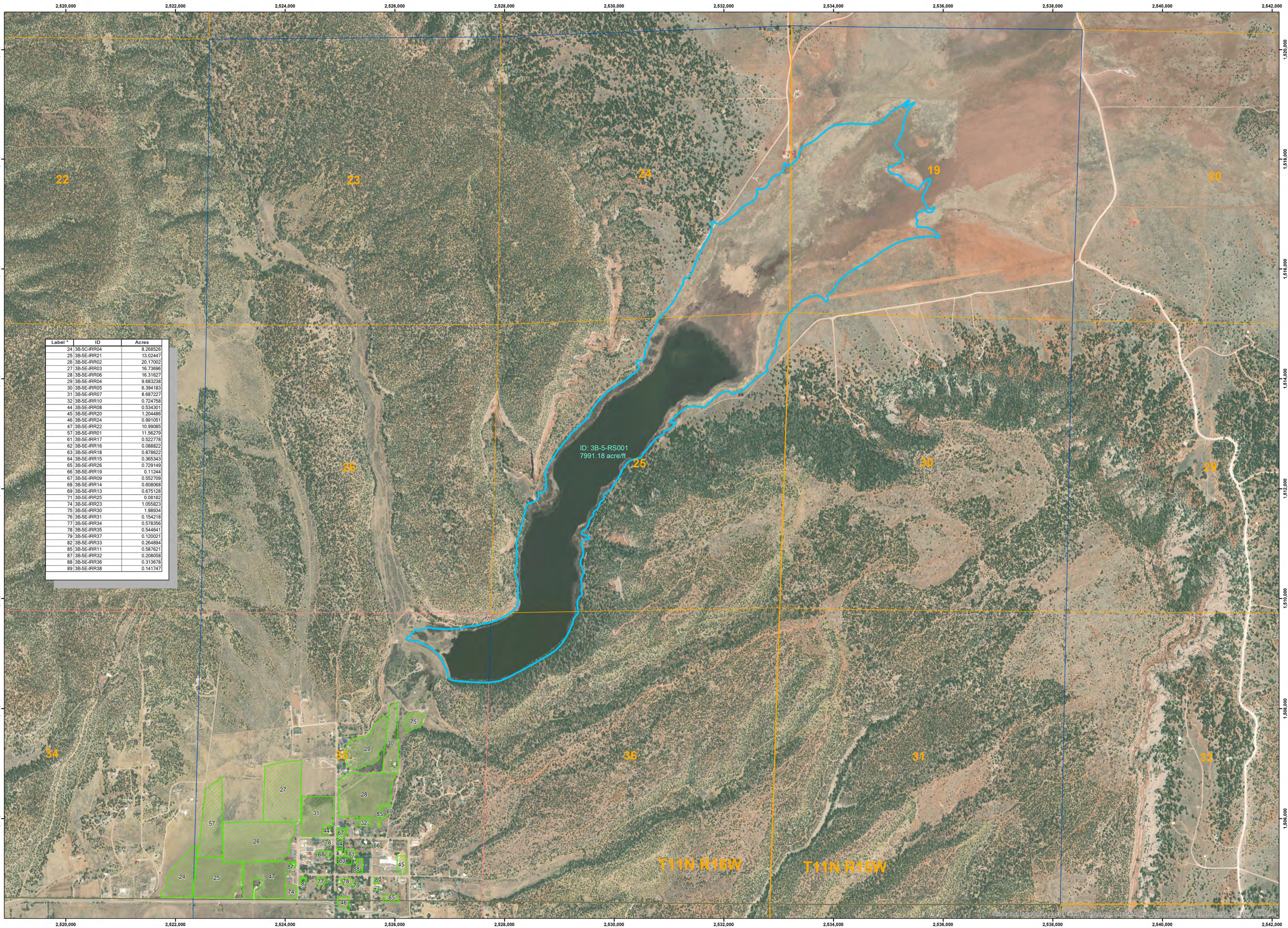
Section, Township, and Range lines originated from the Bureau of Land Management's (BLM) Geographic Coordinate Data Base (GCSDB), received from EnviroLogic, Inc.

Reservation boundary lines were obtained from EnviroLogic, Inc.

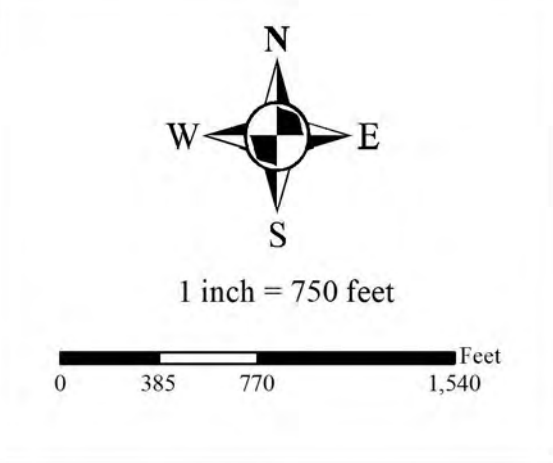
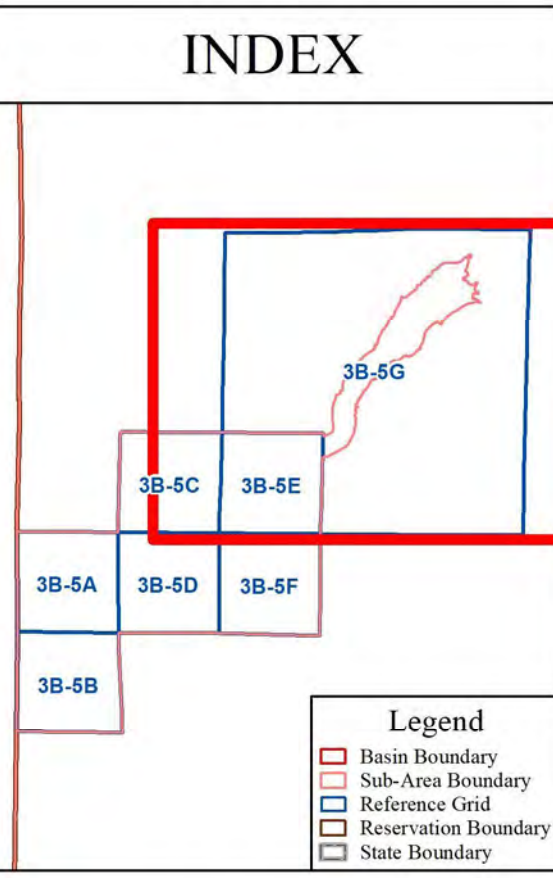
Zuni River Basin Hydrographic Survey
 Sub-Area Ramah; Subfile Number: ZRB-5-0065
 PLSS: T10N, R16W, Sec2; Map: 3B-5F

Natural Resources Consulting Engineers, Inc.
 Fort Collins, CO Oakland, CA Asmara, ERITREA

Source: Esri, DigitalGlobe, GeoEye, Earthstar Geographics, CNES/Airbus DS, USDA, USGS, AeroGRID, IGN, and the GIS User Community



Label	ID	Acres
24	3B-5C-IRR04	2.268526
25	3B-5E-IRR21	13.02447
26	3B-5E-IRR02	20.17002
27	3B-5E-IRR03	16.73696
28	3B-5E-IRR06	16.31627
29	3B-5E-IRR04	9.683238
30	3B-5E-IRR05	6.394183
31	3B-5E-IRR07	8.687227
32	3B-5E-IRR10	0.724758
44	3B-5E-IRR08	0.534301
45	3B-5E-IRR20	1.204486
46	3B-5E-IRR24	0.991051
47	3B-5E-IRR22	10.99385
57	3B-5E-IRR01	11.56279
61	3B-5E-IRR17	0.522778
62	3B-5E-IRR16	0.088822
63	3B-5E-IRR18	0.878622
64	3B-5E-IRR15	0.365343
65	3B-5E-IRR26	0.729149
66	3B-5E-IRR19	0.11244
67	3B-5E-IRR09	0.552709
68	3B-5E-IRR14	0.608068
69	3B-5E-IRR13	0.675128
71	3B-5E-IRR25	0.08182
74	3B-5E-IRR23	1.055823
75	3B-5E-IRR30	1.98934
76	3B-5E-IRR31	0.154218
77	3B-5E-IRR34	0.578356
78	3B-5E-IRR35	0.544641
79	3B-5E-IRR37	0.120021
82	3B-5E-IRR33	0.264894
85	3B-5E-IRR11	0.587621
87	3B-5E-IRR32	0.208058
88	3B-5E-IRR36	0.313678
89	3B-5E-IRR38	0.141747



April 2020

Labels that are truncated appear on an adjacent map.

Map Projection:
NAD 1983 StatePlane New Mexico West FIPS 3003 Feet

Background Sources:
ArcGIS Online World Imagery (NAIP)

Section, Township, and Range lines originated from the Bureau of Land Management's (BLM) Geographic Coordinate Data Base (GCSDB), received from EnviroLogics, Inc.

Reservation boundary lines were obtained from EnviroLogics, Inc.

Zuni River Basin Hydrographic Survey
 Sub-Area Ramah; Subfile Number: ZRB-5-0065
 PLSS: T11N, R16W, Sec35; Map: 3B-5G

NRCE
 Natural Resources Consulting Engineers, Inc.
 Fort Collins, CO Oakland, CA Asmara, ERITREA