
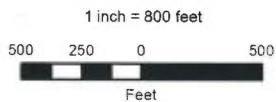


Source: Esri, DigitalGlobe, GeoEye, i-cubed, Earthstar Geographics, CNES/Airbus DS, USDA, USGS, AEX, Getmapping, Aerogrid, IGN, IGP, Swisstopo, and the GIS User Community.

November 2014

**LEGEND**

-  Well
-  Town
-  Stock Pond
-  Sub-Area Boundary
-  Section Boundary



Zuni River Basin  
Hydrographic Survey

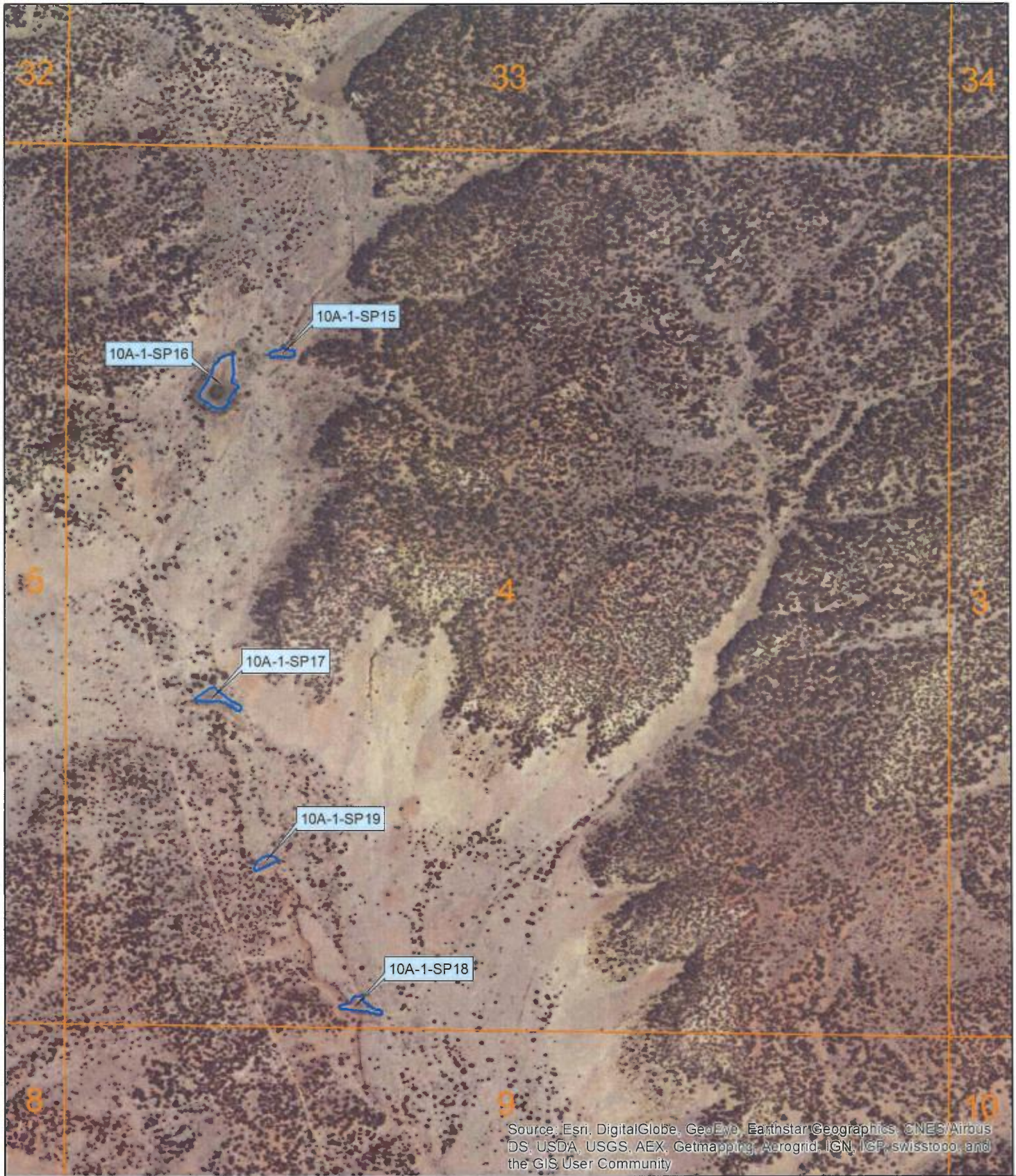
Sub-Area 10  
Subfile Number: ZRB-2-0098  
PLSS: S01, T07N, R18W  
Sheet 1 of 56



**Natural Resources Consulting Engineers, Inc.**

Fort Collins, CO    Oakland, CA    Asmara, ERITREA


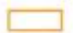


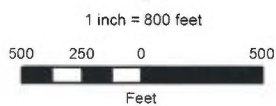


Source: Esri, DigitalGlobe, GeoEye, Earthstar Geographics, CNES/Airbus DS, USDA, USGS, AEX, Getmapping, Aerogrid, IGN, IGP, swisstopo, and the GIS User Community

September 2015

**LEGEND**

-  Stock Pond
-  Section Boundary
-  Sub-Area Boundary



Zuni River Basin  
Hydrographic Survey

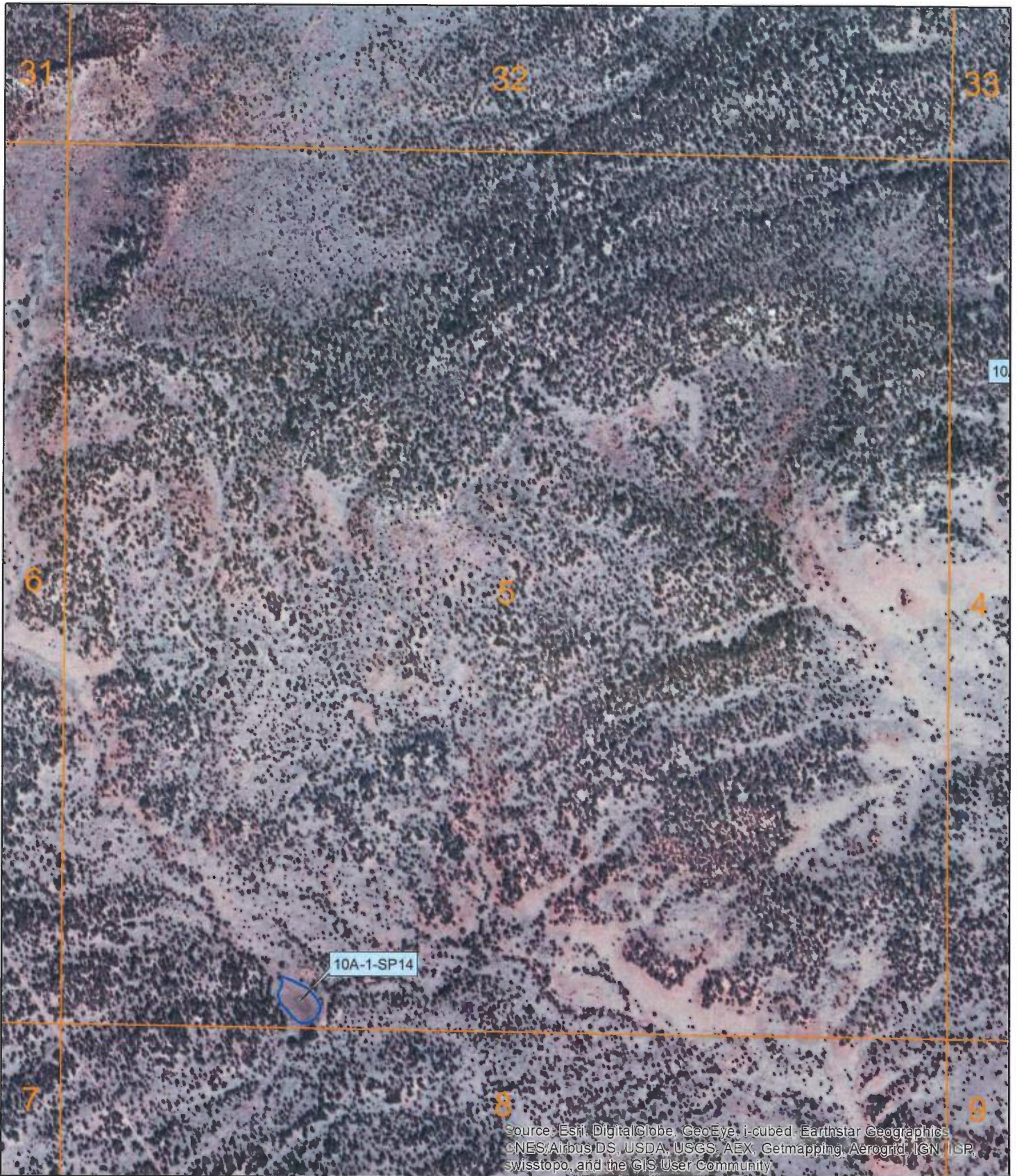
Sub-Area 10  
Subfile Number: ZRB-2-0098  
PLSS: S04, T07N, R18W  
Sheet 2 of 56



**Natural Resources Consulting Engineers, Inc.**

Fort Collins, CO    Oakland, CA    Asmara, ERITREA



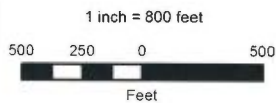


Source: Esri, DigitalGlobe, GeoEye, i-cubed, Earthstar Geographics, CNES/Airbus DS, USDA, USGS, AEX, Getmapping, Aerogrid, IGN, IGP, swisstopo, and the GIS User Community

November 2014

**LEGEND**

-  Well
-  Town
-  Stock Pond
-  Sub-Area Boundary
-  Section Boundary



Zuni River Basin  
Hydrographic Survey

Sub-Area 10  
Subfile Number: ZRB-2-0098  
PLSS: S05, T07N, R18W  
Sheet 3 of 56



**Natural Resources Consulting Engineers, Inc.**


Fort Collins, CO    Oakland, CA    Asmara, ERITREA

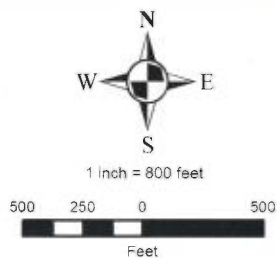




November 2014

**LEGEND**

-  Well
-  Town
-  Stock Pond
-  Sub-Area Boundary
-  Section Boundary



Zuni River Basin  
Hydrographic Survey

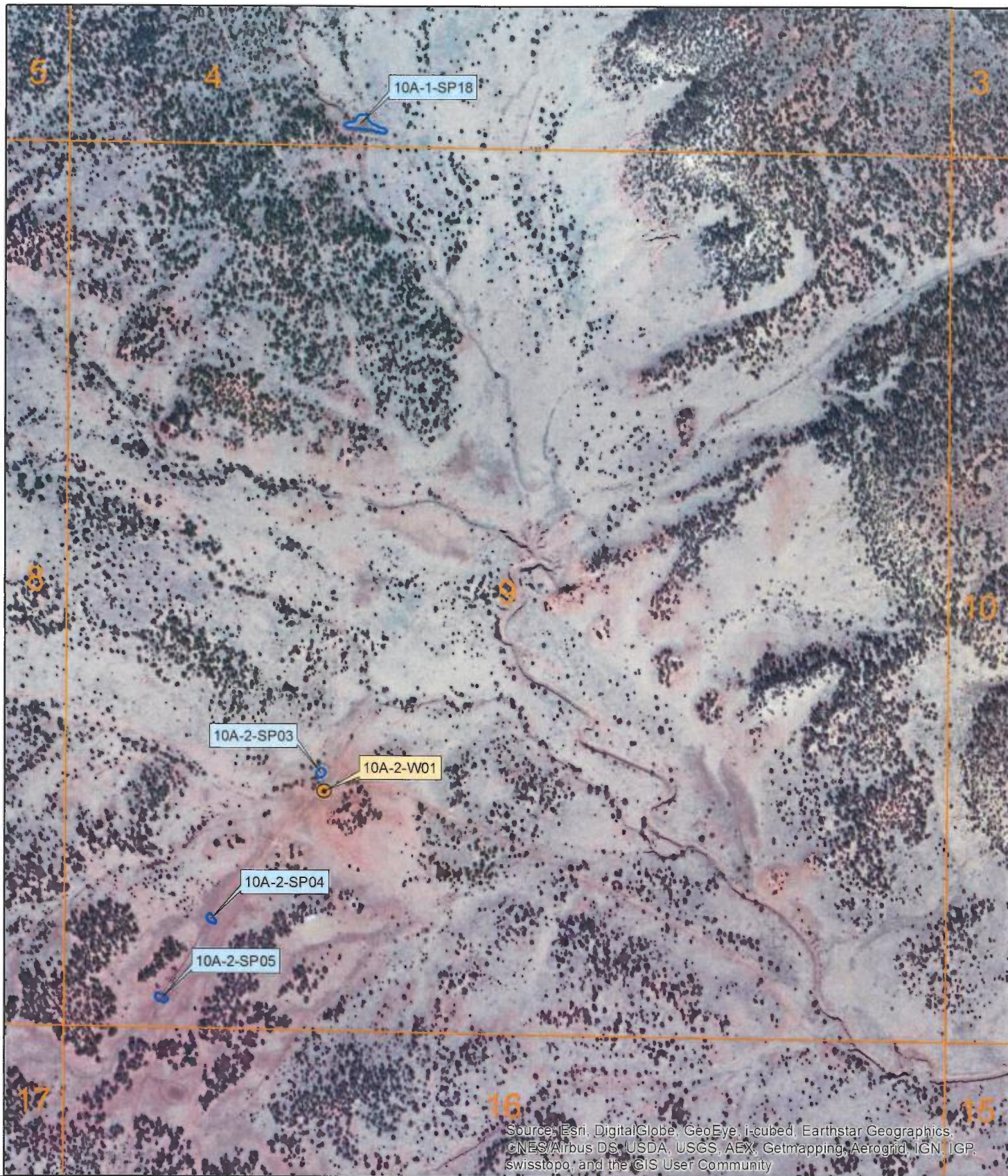
Sub-Area 10  
Subfile Number: ZRB-2-0098  
PLSS: S08, T07N, R18W  
Sheet 4 of 56



**Natural Resources Consulting Engineers, Inc.**

Fort Collins, CO    Oakland, CA    Asmara, ERITREA



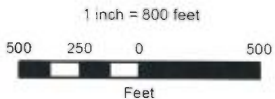


Source: Esri, DigitalGlobe, GeoEye, i-cubed, Earthstar Geographics, CNES/Airbus DS, USDA, USGS, AEX, Getmapping, Aerogrid, IGN, IGP, swisstopo, and the GIS User Community

November 2014

**LEGEND**

-  Well
-  Town
-  Stock Pond
-  Sub-Area Boundary
-  Section Boundary



Zuni River Basin  
Hydrographic Survey

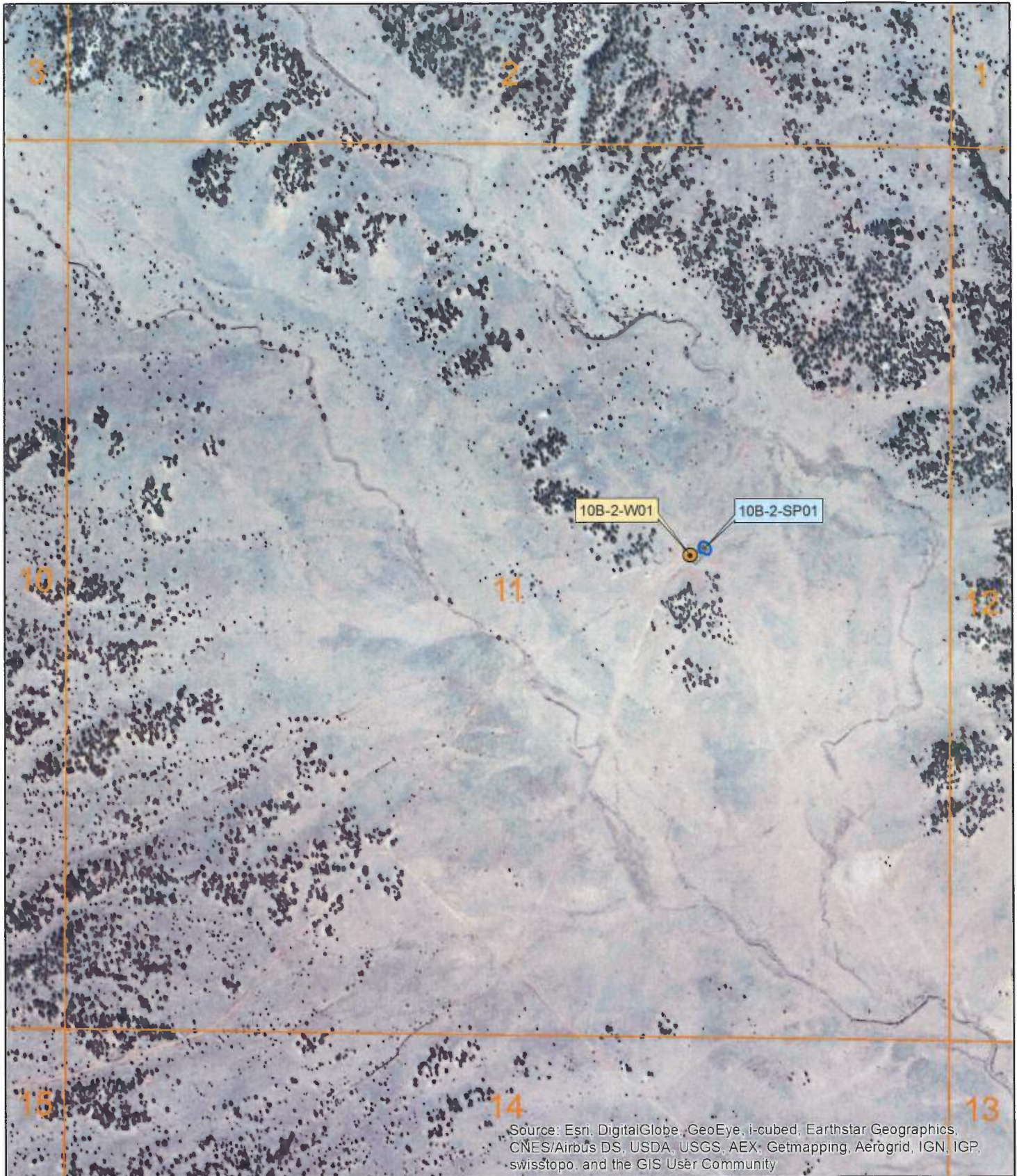
Sub-Area 10  
Subfile Number: ZRB-2-0098  
PLSS: S09, T07N, R18W  
Sheet 5 of 56



**Natural Resources Consulting Engineers, Inc.**

Fort Collins, CO    Oakland, CA    Asmara, ERITREA








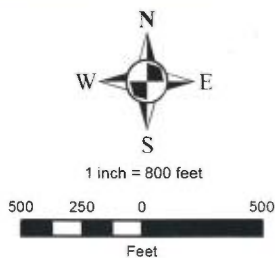


Source: Esri, DigitalGlobe, GeoEye, i-cubed, Earthstar Geographics, CNES/Airbus DS, USDA, USGS, AEX, Getmapping, Aerogrid, IGN, IGP, swisstopo, and the GIS User Community

November 2014

**LEGEND**

-  Well
-  Town
-  Stock Pond
-  Sub-Area Boundary
-  Section Boundary



Zuni River Basin  
Hydrographic Survey

Sub-Area 10  
Subfile Number: ZRB-2-0098  
PLSS: S11, T07N, R18W  
Sheet 6 of 56



**Natural Resources Consulting Engineers, Inc.**

Fort Collins, CO    Oakland, CA    Asmara, ERITREA



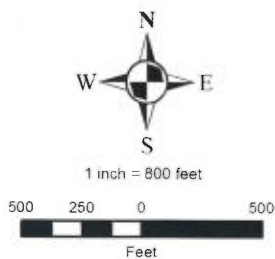


Source: Esri, DigitalGlobe, GeoEye, i-cubed, Earthstar Geographics, CNES/Airbus DS, USDA, USGS, AEX, Getmapping, Aerogrid, IGN, IGP, swisstopo, and the GIS User Community

November 2014

**LEGEND**

-  Well
-  Town
-  Stock Pond
-  Sub-Area Boundary
-  Section Boundary



Zuni River Basin  
Hydrographic Survey

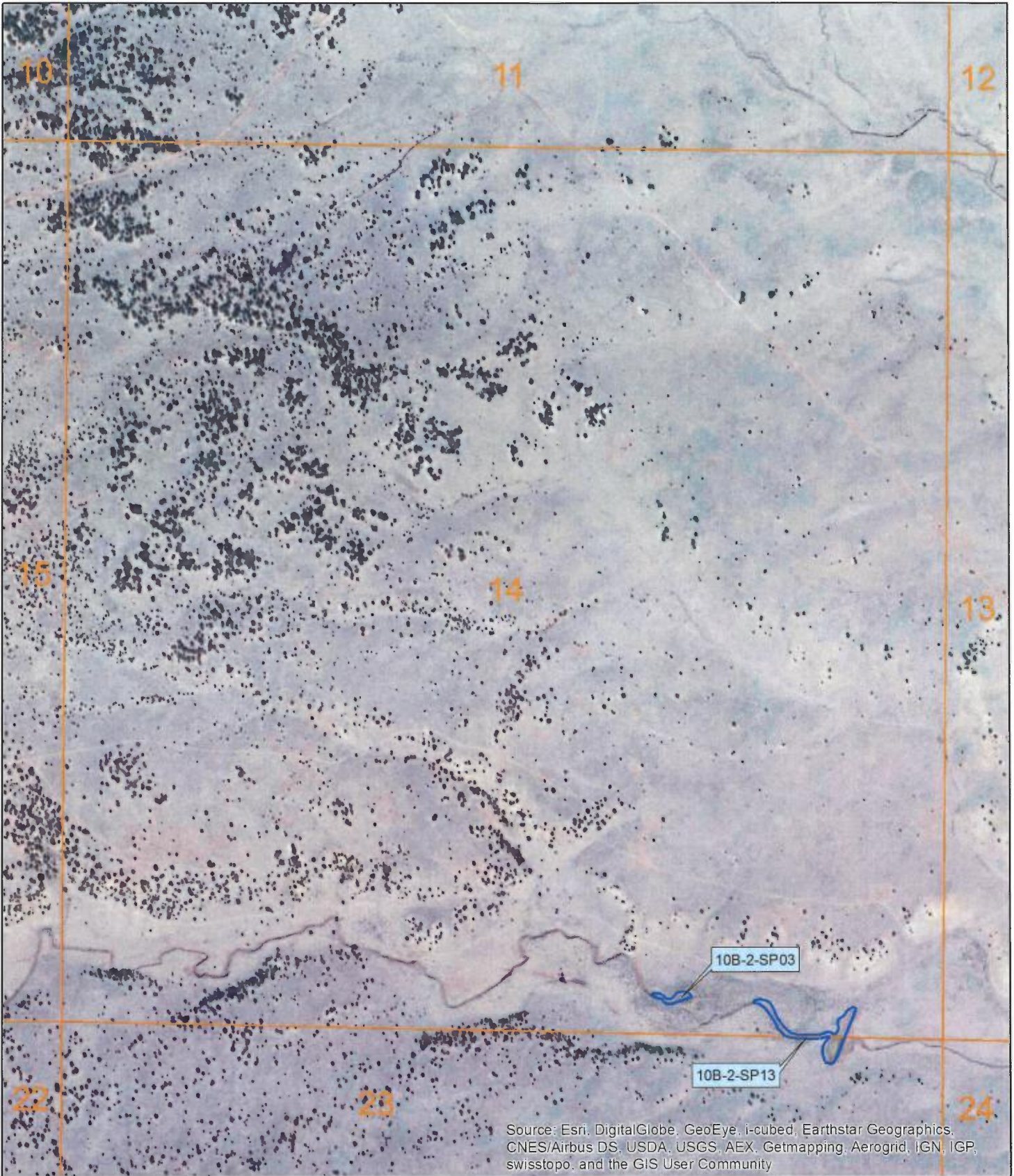
Sub-Area 10  
Subfile Number: ZRB-2-0098  
PLSS: S13, T07N, R18W  
Sheet 7 of 56



**Natural Resources Consulting Engineers, Inc.**

Fort Collins, CO    Oakland, CA    Asmara, ERITREA



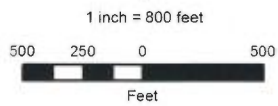


Source: Esri, DigitalGlobe, GeoEye, i-cubed, Earthstar Geographics, CNES/Airbus DS, USDA, USGS, AEX, Getmapping, Aerogrid, IGN, IGP, swisstopo, and the GIS User Community

November 2014

**LEGEND**

-  Well
-  Town
-  Stock Pond
-  Sub-Area Boundary
-  Section Boundary



Zuni River Basin  
Hydrographic Survey

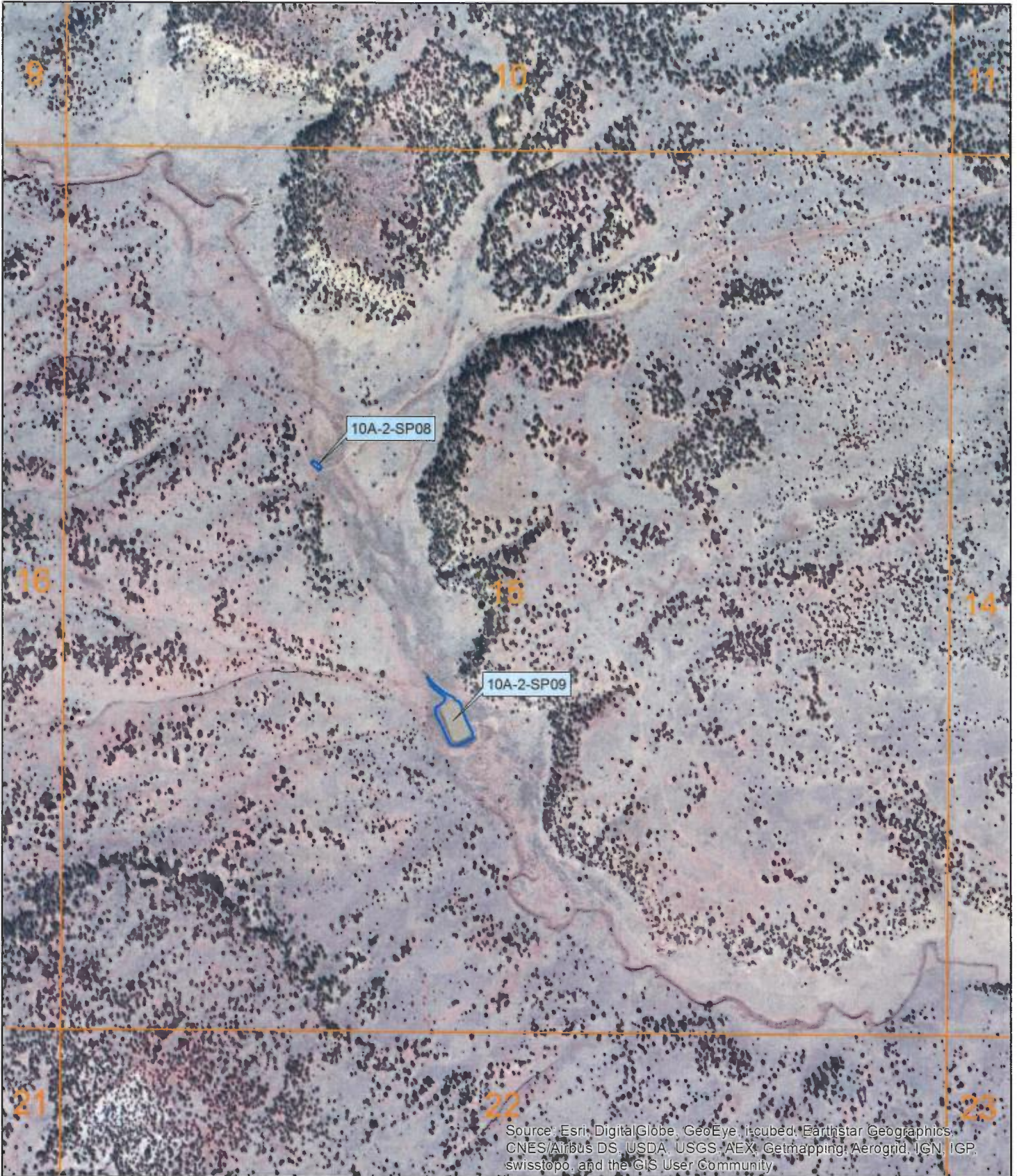
Sub-Area 10  
Subfile Number: ZRB-2-0098  
PLSS: S14, T07N, R18W  
Sheet 8 of 56



**Natural Resources Consulting Engineers, Inc.**

Fort Collins, CO    Oakland, CA    Asmara, ERITREA



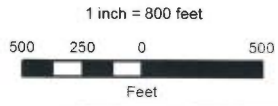


Source: Esri, DigitalGlobe, GeoEye, i-cubed, Earthstar Geographics, CNES/Airbus DS, USDA, USGS, AEX, Getmapping, Aerogrid, IGN, IGP, swisstopo, and the GIS User Community

November 2014

**LEGEND**

-  Well
-  Town
-  Stock Pond
-  Sub-Area Boundary
-  Section Boundary



Zuni River Basin  
Hydrographic Survey

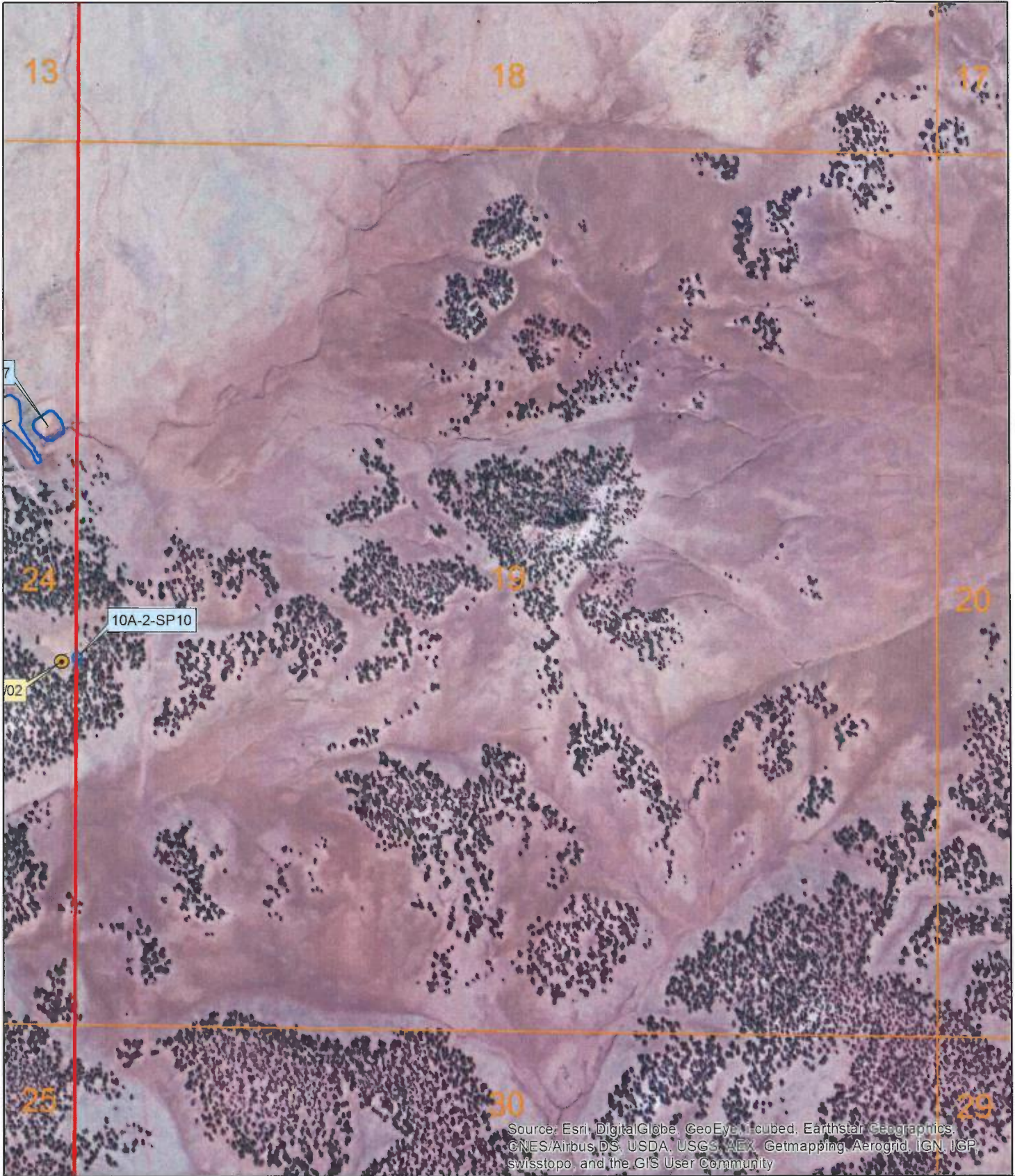
Sub-Area 10  
Subfile Number: ZRB-2-0098  
PLSS: S15, T07N, R18W  
Sheet 9 of 56



**Natural Resources Consulting Engineers, Inc.**

Fort Collins, CO    Oakland, CA    Asmara, ERITREA



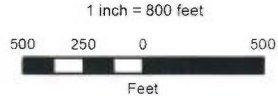


Source: Esri, DigitalGlobe, GeoEye, Earthstar Geographics, CNES/Airbus DS, USDA, USGS, AeroX, Getmapping, Aerogrid, IGN, IGP, Swisstopo, and the GIS User Community

November 2014

**LEGEND**

-  Well
-  Town
-  Stock Pond
-  Sub-Area Boundary
-  Section Boundary



Zuni River Basin  
Hydrographic Survey

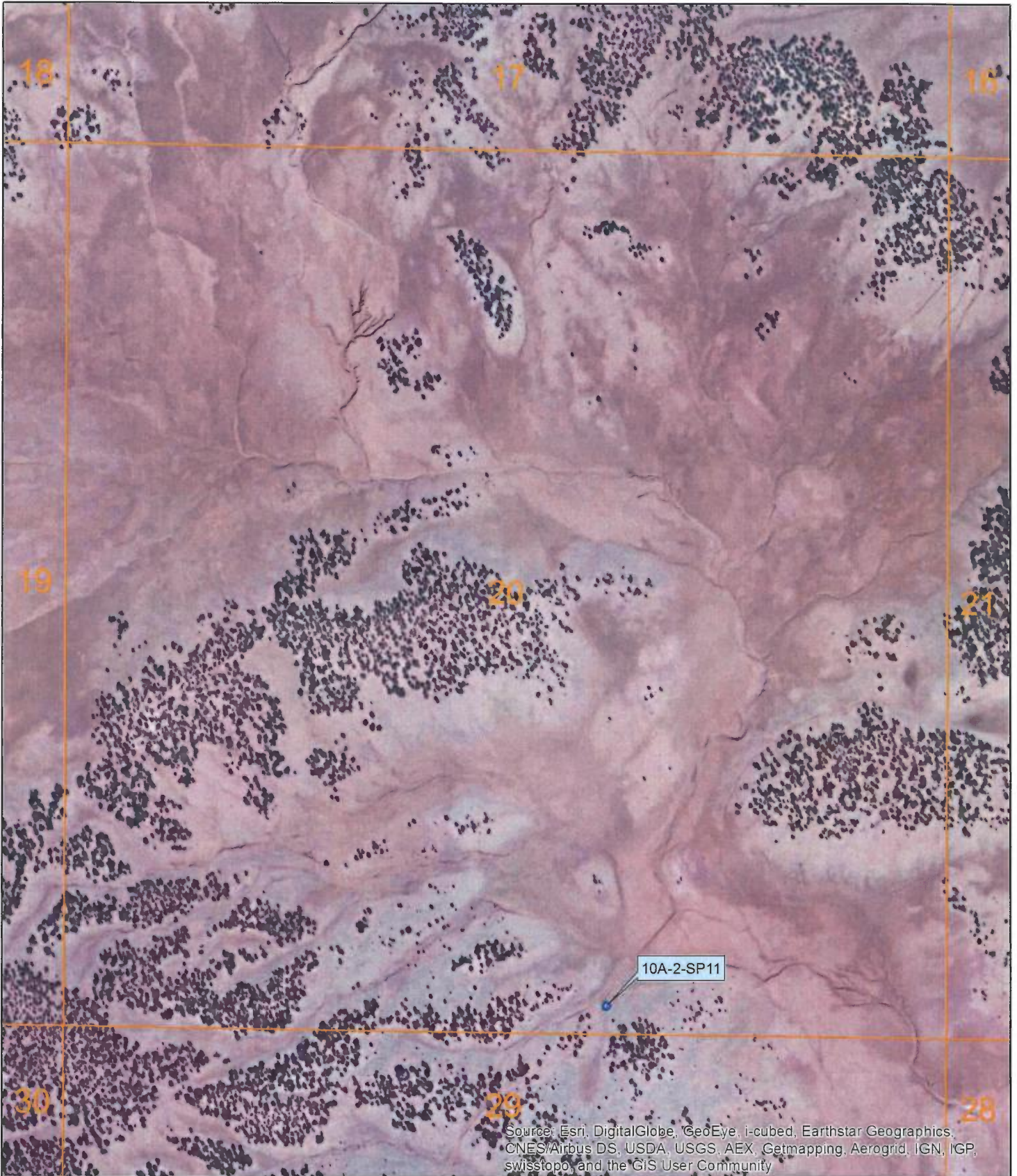
Sub-Area 10  
Subfile Number: ZRB-2-0098  
PLSS: S19, T07N, R18W  
Sheet 10 of 56



**Natural Resources Consulting Engineers, Inc.**

Fort Collins, CO    Oakland, CA    Asmara, ERITREA



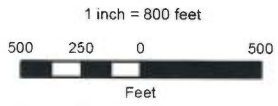


Source: Esri, DigitalGlobe, GeoEye, i-cubed, Earthstar Geographics, CNES/Airbus DS, USDA, USGS, AEX, Getmapping, Aerogrid, IGN, IGP, swisstopo, and the GIS User Community

November 2014

**LEGEND**

-  Well
-  Town
-  Stock Pond
-  Sub-Area Boundary
-  Section Boundary



Zuni River Basin  
Hydrographic Survey

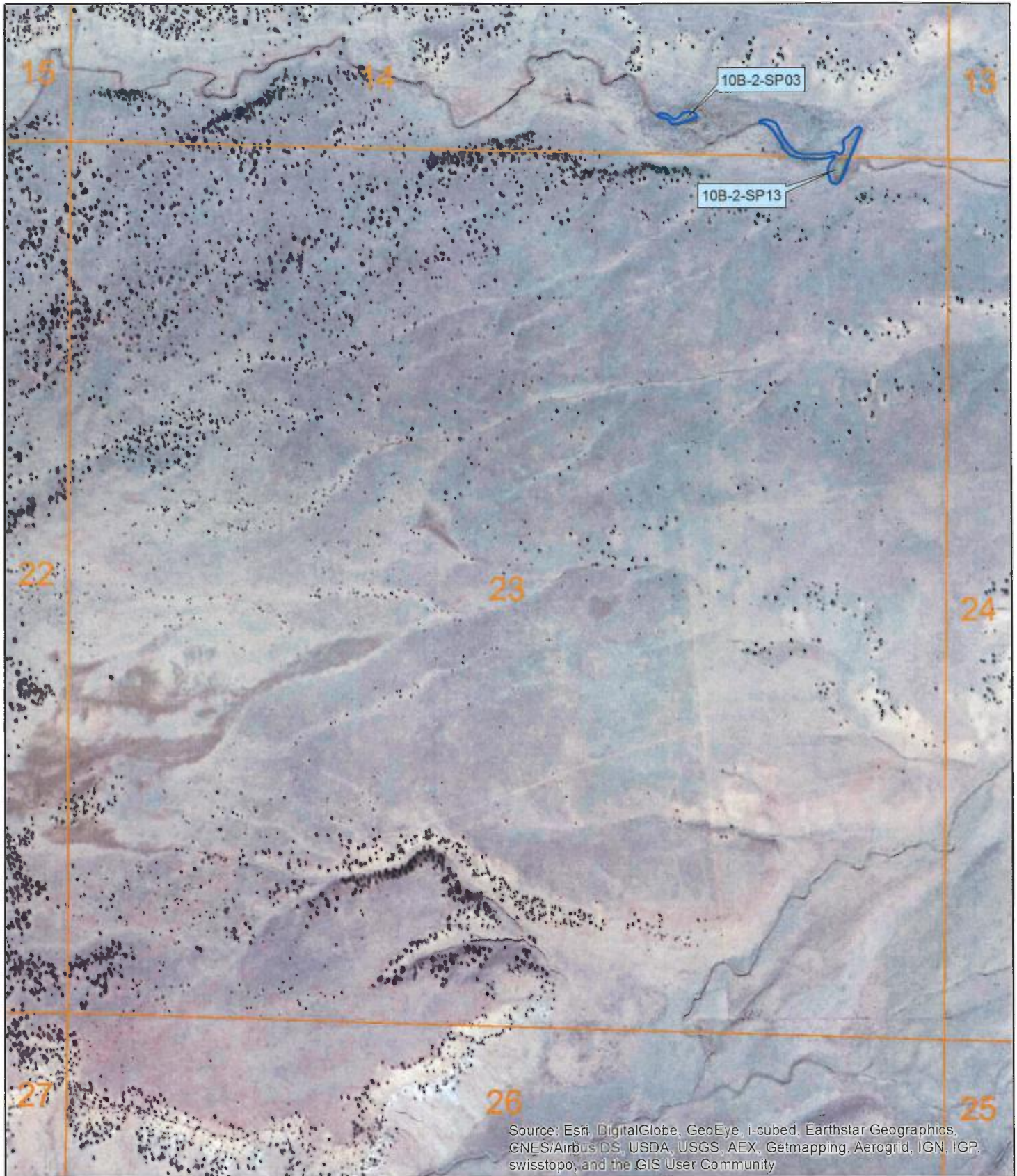
Sub-Area 10  
Subfile Number: ZRB-2-0098  
PLSS: S20, T07N, R18W  
Sheet 11 of 56



**Natural Resources Consulting Engineers, Inc.**




Fort Collins, CO    Oakland, CA    Asmara, ERITREA





November 2014

**LEGEND**

-  Well
-  Town
-  Stock Pond
-  Sub-Area Boundary
-  Section Boundary



1 inch = 800 feet



Zuni River Basin  
Hydrographic Survey

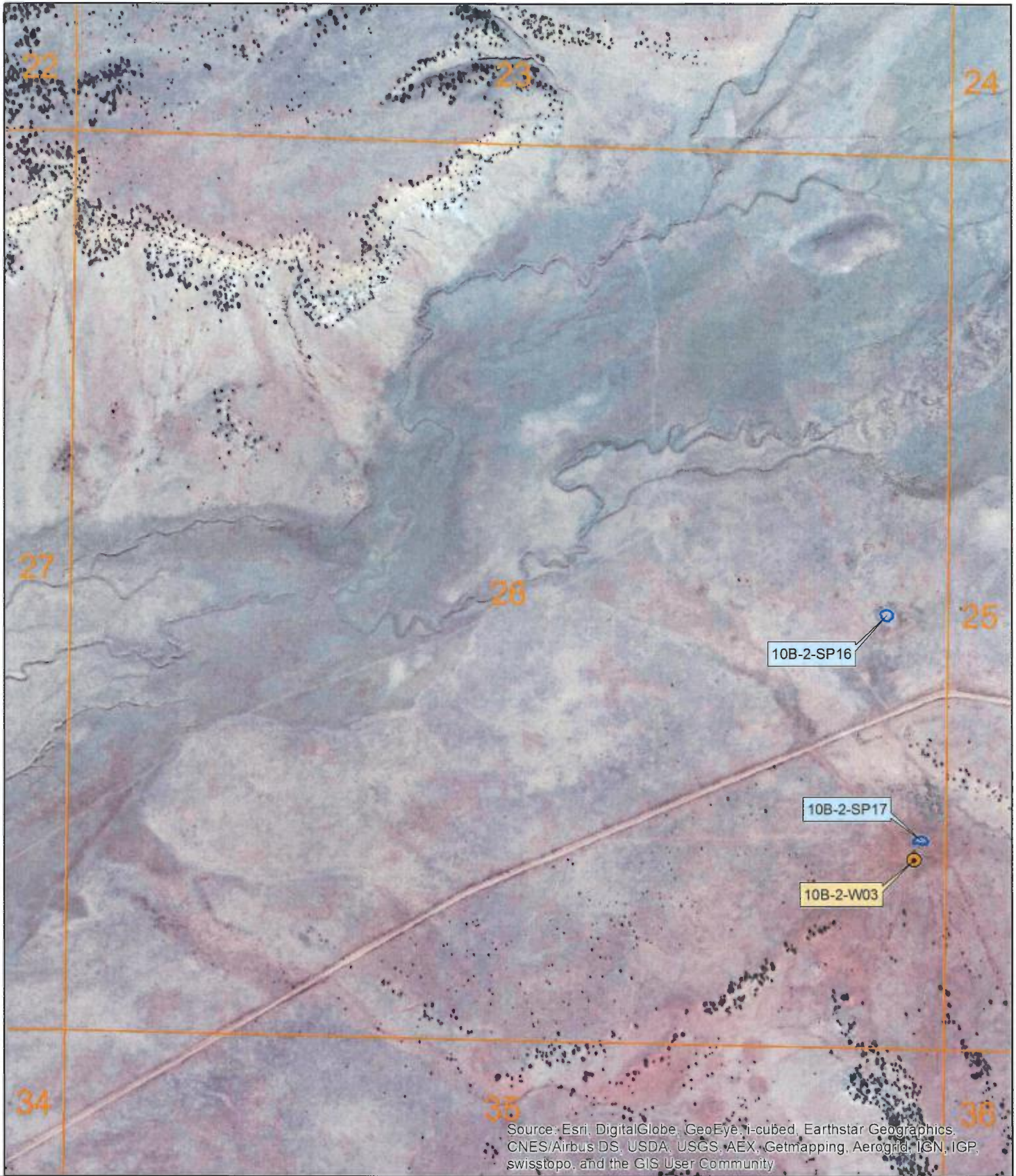
Sub-Area 10  
Subfile Number: ZRB-2-0098  
PLSS: S23, T07N, R18W  
Sheet 12 of 56



**Natural Resources Consulting Engineers, Inc.**

Fort Collins, CO    Oakland, CA    Asmara, ERITREA



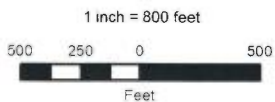


Source: Esri, DigitalGlobe, GeoEye, i-cubed, Earthstar Geographics, CNES/Airbus DS, USDA, USGS, AEX, Getmapping, Aerogrid, IGN, IGP, swisstopo, and the GIS User Community

November 2014

**LEGEND**

-  Well
-  Town
-  Stock Pond
-  Sub-Area Boundary
-  Section Boundary



Zuni River Basin  
Hydrographic Survey

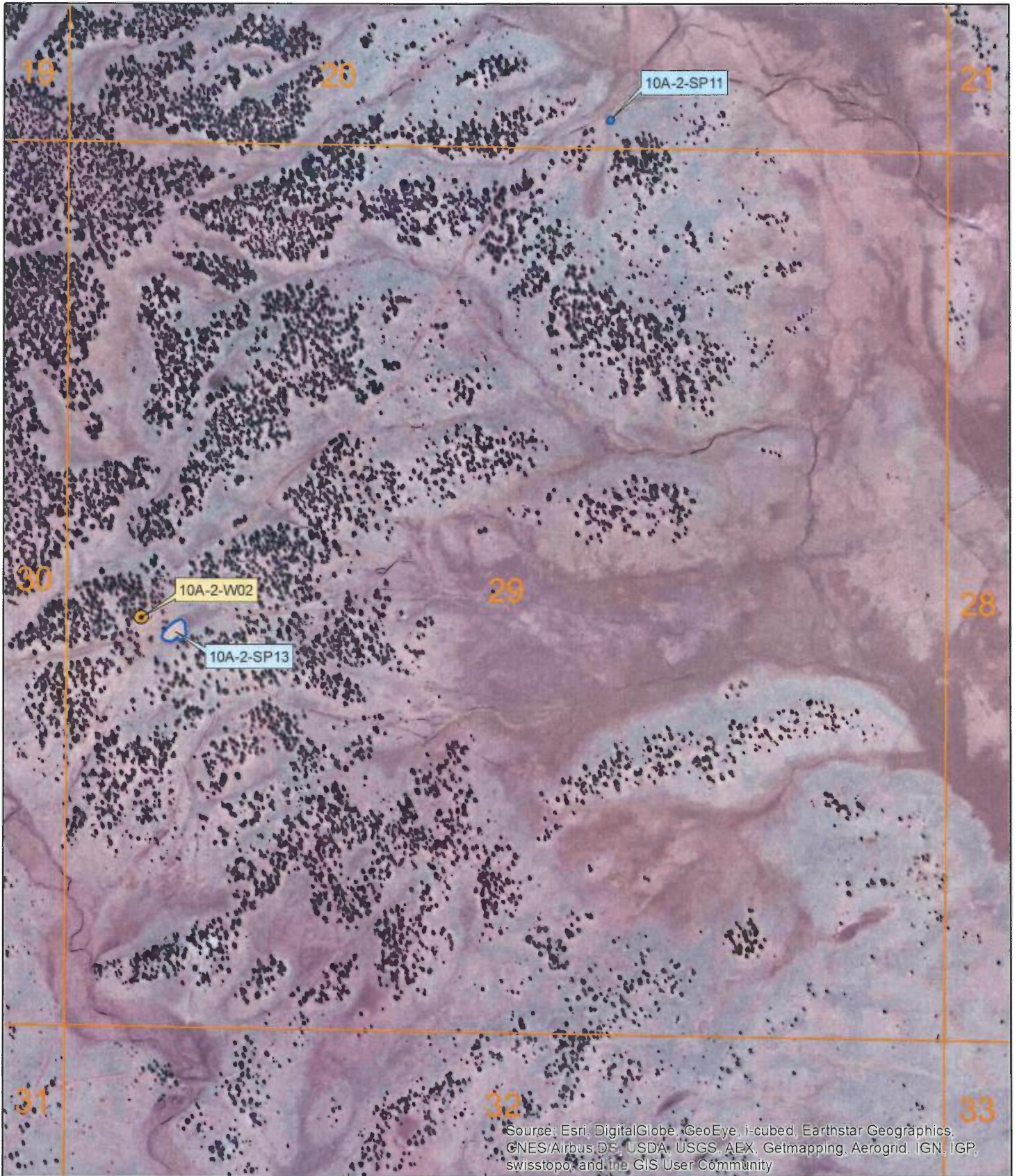
Sub-Area 10  
Subfile Number: ZRB-2-0098  
PLSS: S26, T07N, R18W  
Sheet 13 of 56



**Natural Resources Consulting Engineers, Inc.**

Fort Collins, CO    Oakland, CA    Asmara, ERITREA



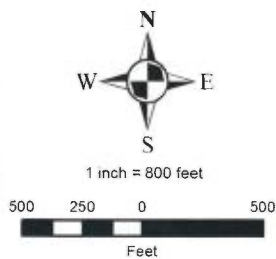


Source: Esri, DigitalGlobe, GeoEye, i-cubed, Earthstar Geographics, CNES/Airbus DS, USDA, USGS, AEX, Getmapping, Aerogrid, IGN, IGP, swisstopo, and the GIS User Community

November 2014

**LEGEND**

-  Well
-  Town
-  Stock Pond
-  Sub-Area Boundary
-  Section Boundary



Zuni River Basin  
Hydrographic Survey

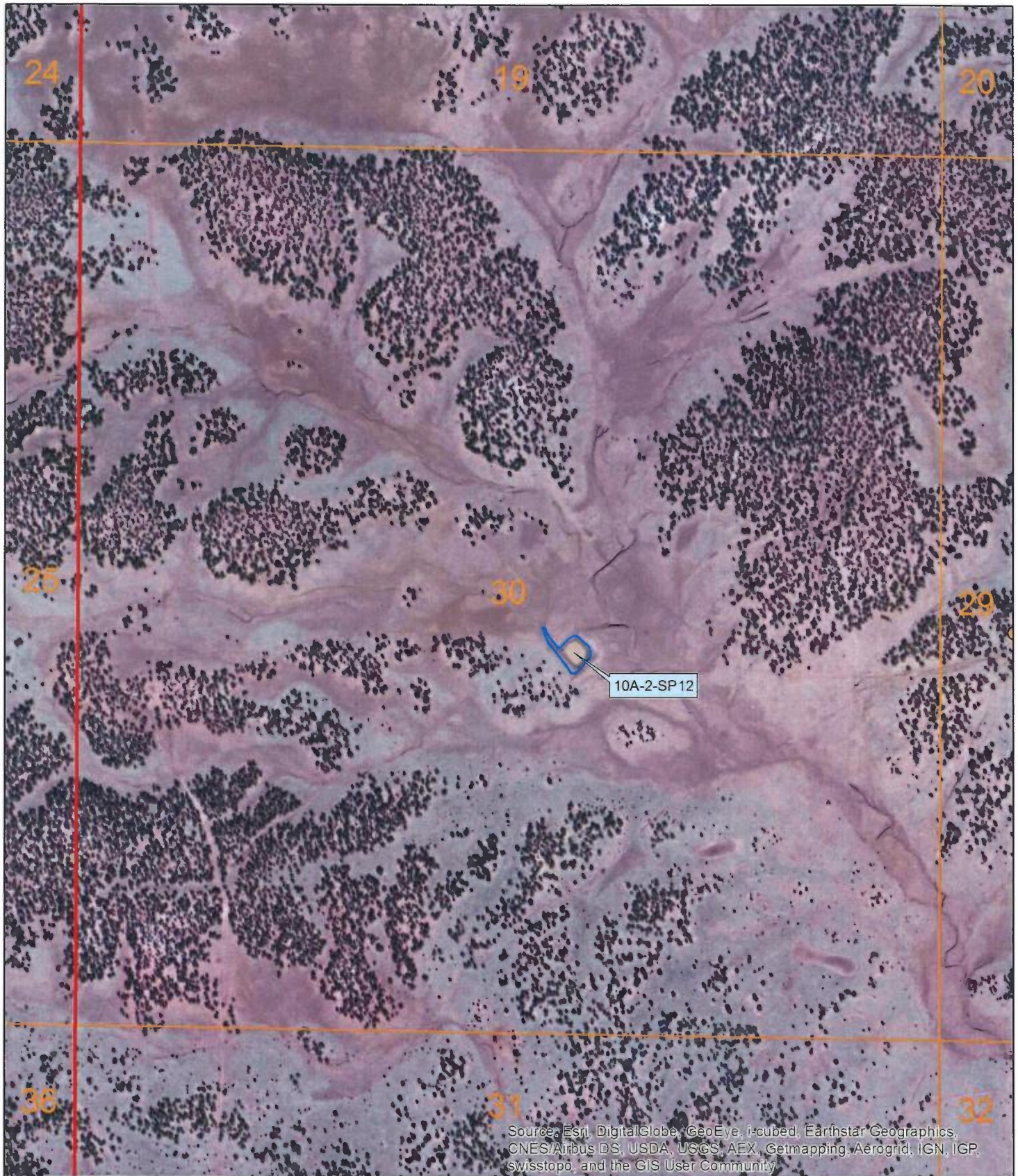
Sub-Area 10  
Subfile Number: ZRB-2-0098  
PLSS: S29, T07N, R18W  
Sheet 14 of 56



**Natural Resources Consulting Engineers, Inc.**

Fort Collins, CO    Oakland, CA    Asmara, ERITREA



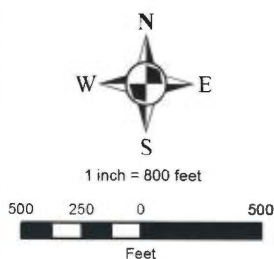


Source: Esri, DigitalGlobe, GeoEye, i-cubed, Earthstar Geographics, CNES/Airbus DS, USDA, USGS, AEX, Getmapping, Aerogrid, IGN, IGP, swisstopo, and the GIS User Community

November 2014

**LEGEND**

-  Well
-  Town
-  Stock Pond
-  Sub-Area Boundary
-  Section Boundary



Zuni River Basin  
Hydrographic Survey

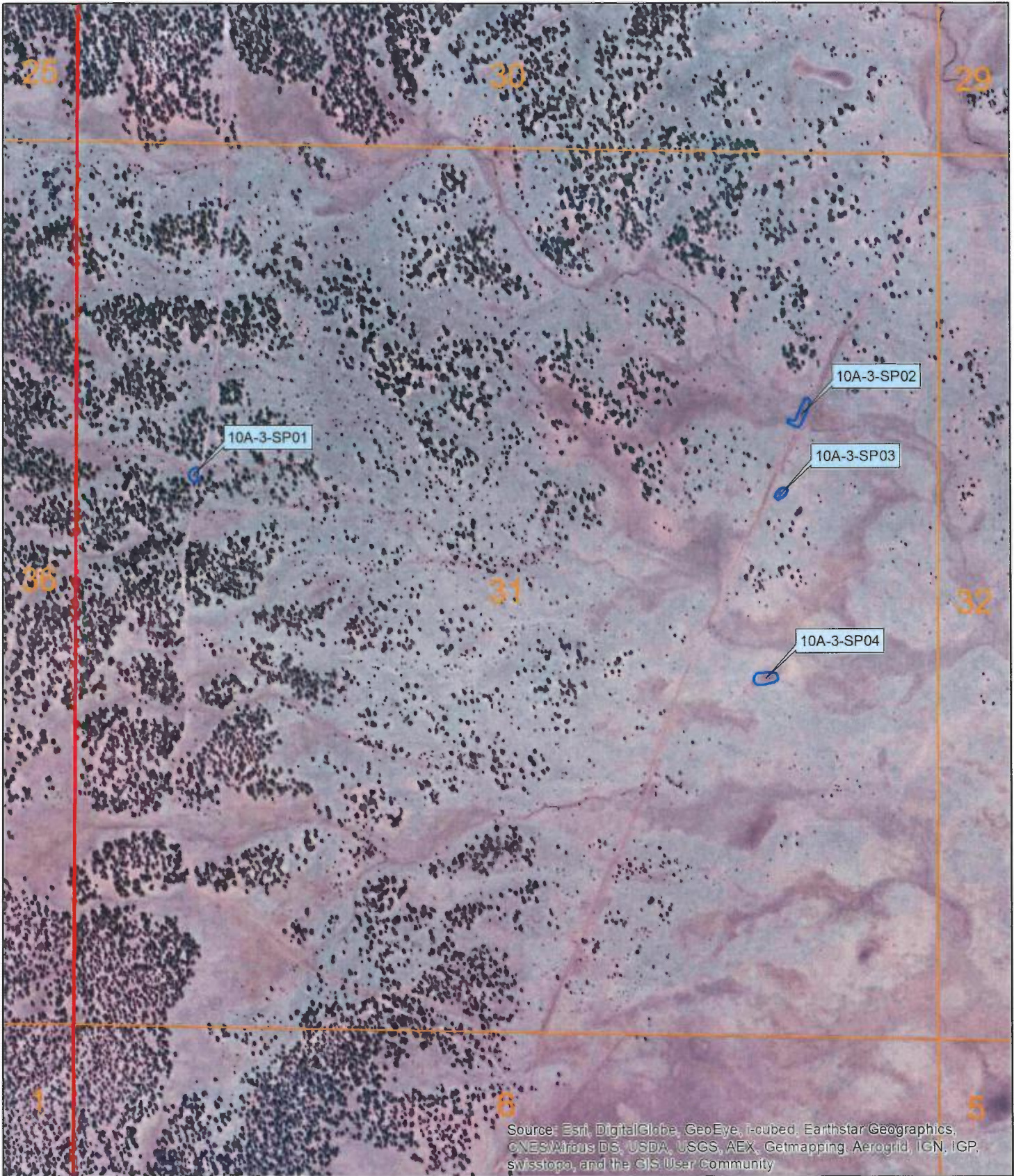
Sub-Area 10  
Subfile Number: ZRB-2-0098  
PLSS: S30, T07N, R18W  
Sheet 15 of 56



**Natural Resources Consulting Engineers, Inc.**

Fort Collins, CO    Oakland, CA    Asmara, ERITREA



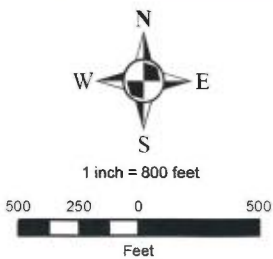


Source: Esri, DigitalGlobe, GeoEye, i-cubed, Earthstar Geographics, CNES/Airbus DS, USDA, USGS, AEX, Getmapping, Aerogrid, IGN, IGP, Swisstopo, and the GIS User Community

November 2014

**LEGEND**

-  Well
-  Town
-  Stock Pond
-  Sub-Area Boundary
-  Section Boundary



Zuni River Basin  
Hydrographic Survey

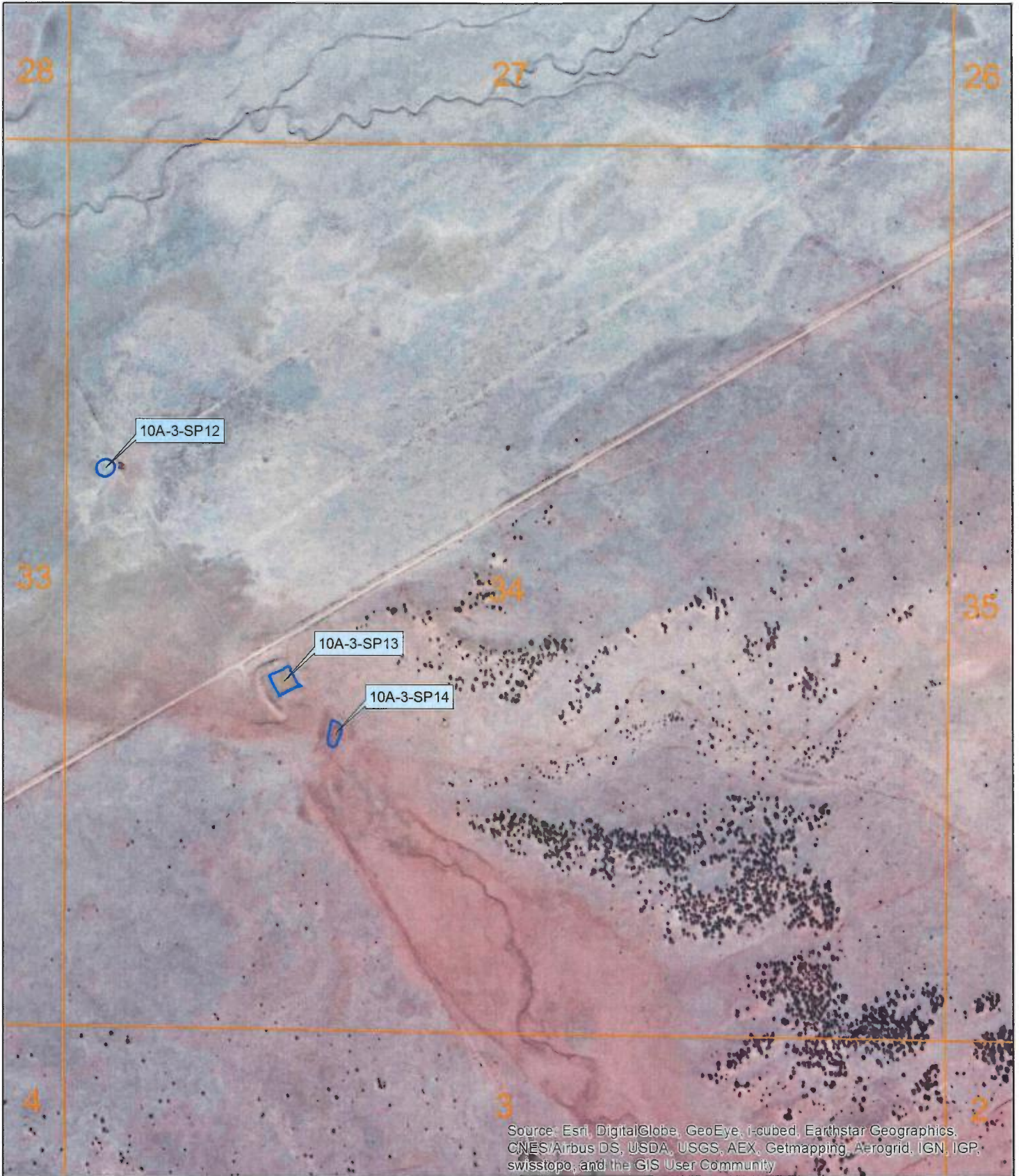
Sub-Area 10  
Subfile Number: ZRB-2-0098  
PLSS: S31, T07N, R18W  
Sheet 16 of 56



**Natural Resources Consulting Engineers, Inc.**

Fort Collins, CO    Oakland, CA    Asmara, ERITREA



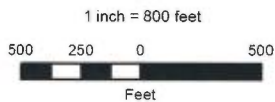


Source: Esri, DigitalGlobe, GeoEye, i-cubed, Earthstar Geographics, CNES/Airbus DS, USDA, USGS, AEX, Getmapping, Aerogrid, IGN, IGP, swisstopo, and the GIS User Community

November 2014

**LEGEND**

-  Well
-  Town
-  Stock Pond
-  Sub-Area Boundary
-  Section Boundary



Zuni River Basin  
Hydrographic Survey

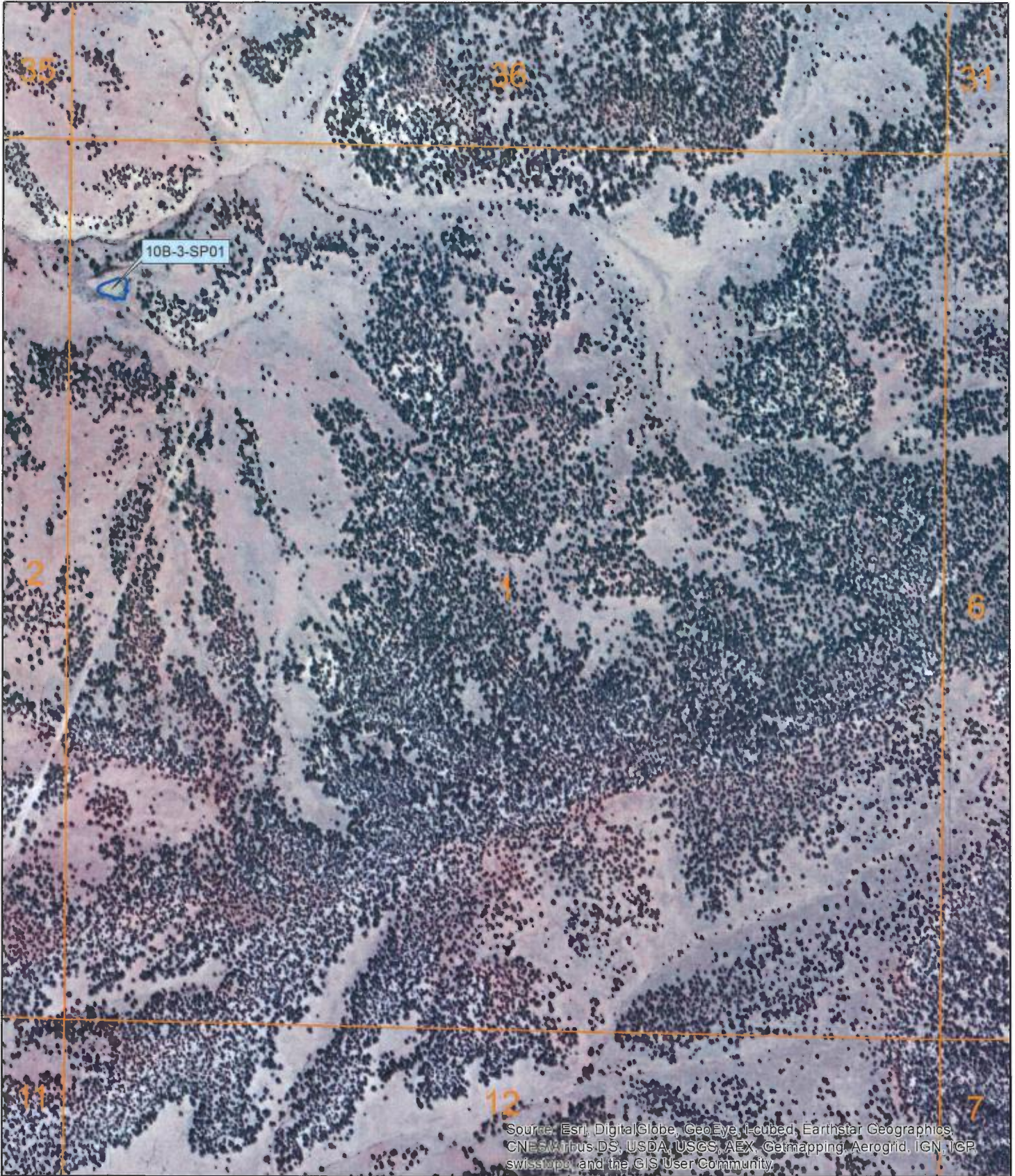
Sub-Area 10  
Subfile Number: ZRB-2-0098  
PLSS: S34, T07N, R18W  
Sheet 17 of 56



**Natural Resources Consulting Engineers, Inc.**

Fort Collins, CO    Oakland, CA    Asmara, ERITREA





Source: Esri, DigitalGlobe, GeoEye, i-cubed, Earthstar Geographics, CNES/Airbus DS, USDA, USGS, AEX, Getmapping, Aerogrid, IGN, IGP, swisstopo, and the GIS User Community.

November 2014

**LEGEND**

-  Well
-  Town
-  Stock Pond
-  Sub-Area Boundary
-  Section Boundary



1 inch = 800 feet



Zuni River Basin  
Hydrographic Survey

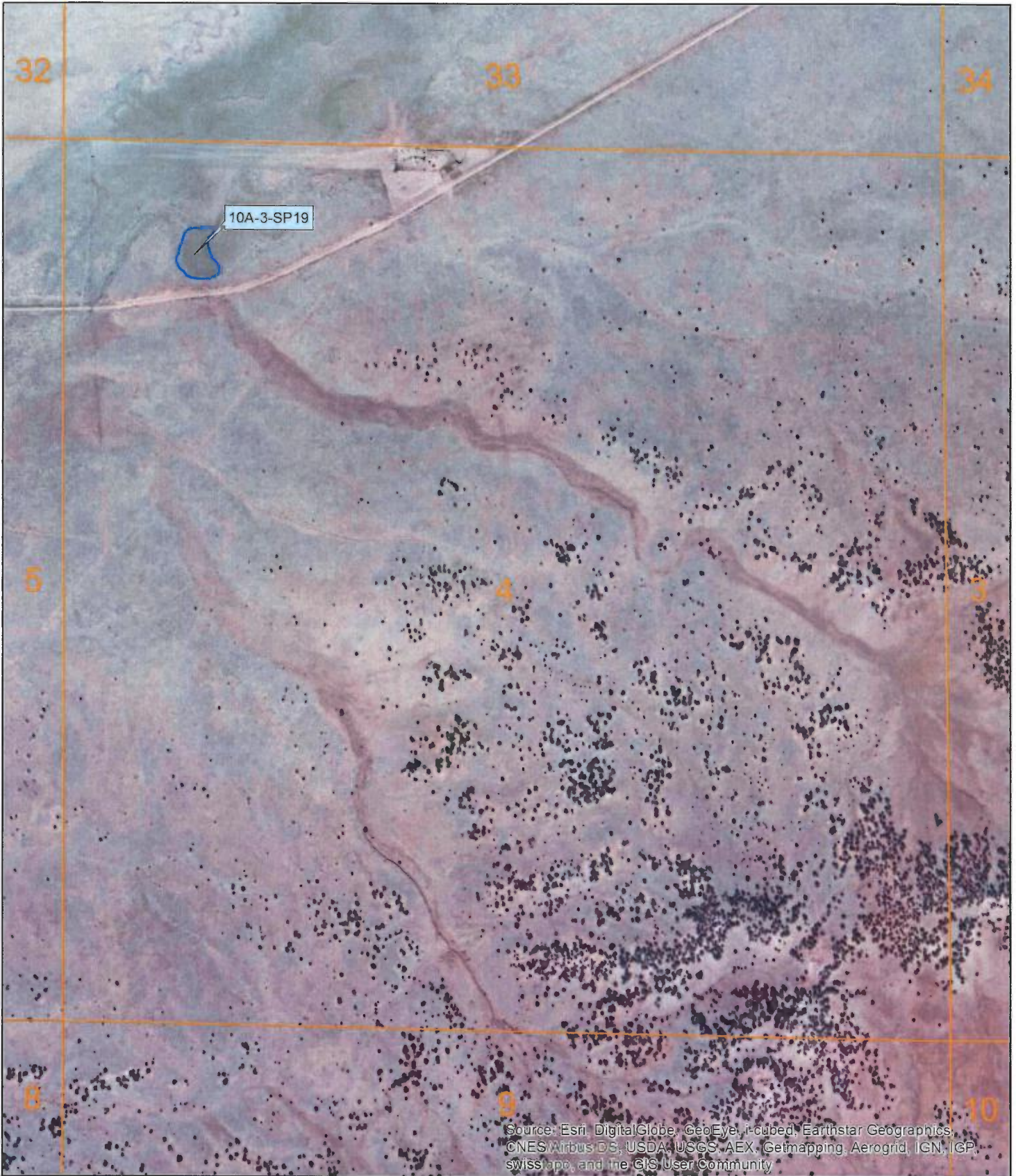
Sub-Area 10  
Subfile Number: ZRB-2-0098  
PLSS: S01, T06N, R18W  
Sheet 18 of 56



**Natural Resources Consulting Engineers, Inc.**

Fort Collins, CO    Oakland, CA    Asmara, ERITREA



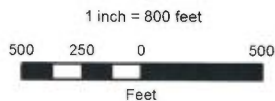


Source: Esri, DigitalGlobe, GeoEye, i-cubed, Earthstar Geographics, CNES/Airbus DS, USDA, USGS, AEX, Getmapping, Aerogrid, IGN, IGP, swiss topo, and the GIS User Community

November 2014

**LEGEND**

-  Well
-  Town
-  Stock Pond
-  Sub-Area Boundary
-  Section Boundary



Zuni River Basin  
Hydrographic Survey

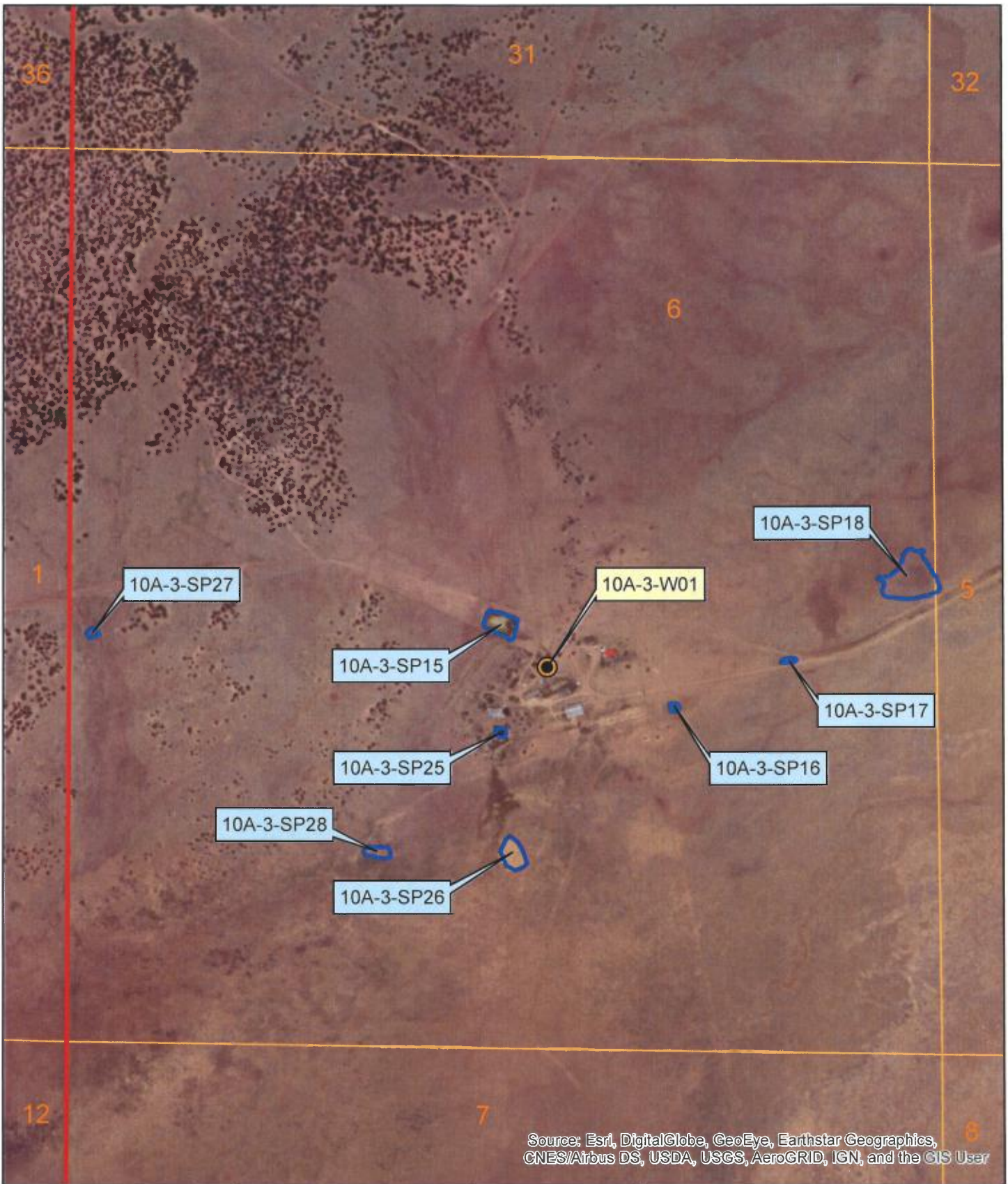
Sub-Area 10  
Subfile Number: ZRB-2-0098  
PLSS: S04, T06N, R18W  
Sheet 19 of 56



**Natural Resources Consulting Engineers, Inc.**

Fort Collins, CO    Oakland, CA    Asmara, ERITREA





**LEGEND**


- Well
- Stock Pond
- Section Boundary
- Sub-Area Boundary

N  
W —+— E  
S

1 inch = 800 feet

0    255    510    1,020  
Feet

Zuni River Basin  
Hydrographic Survey



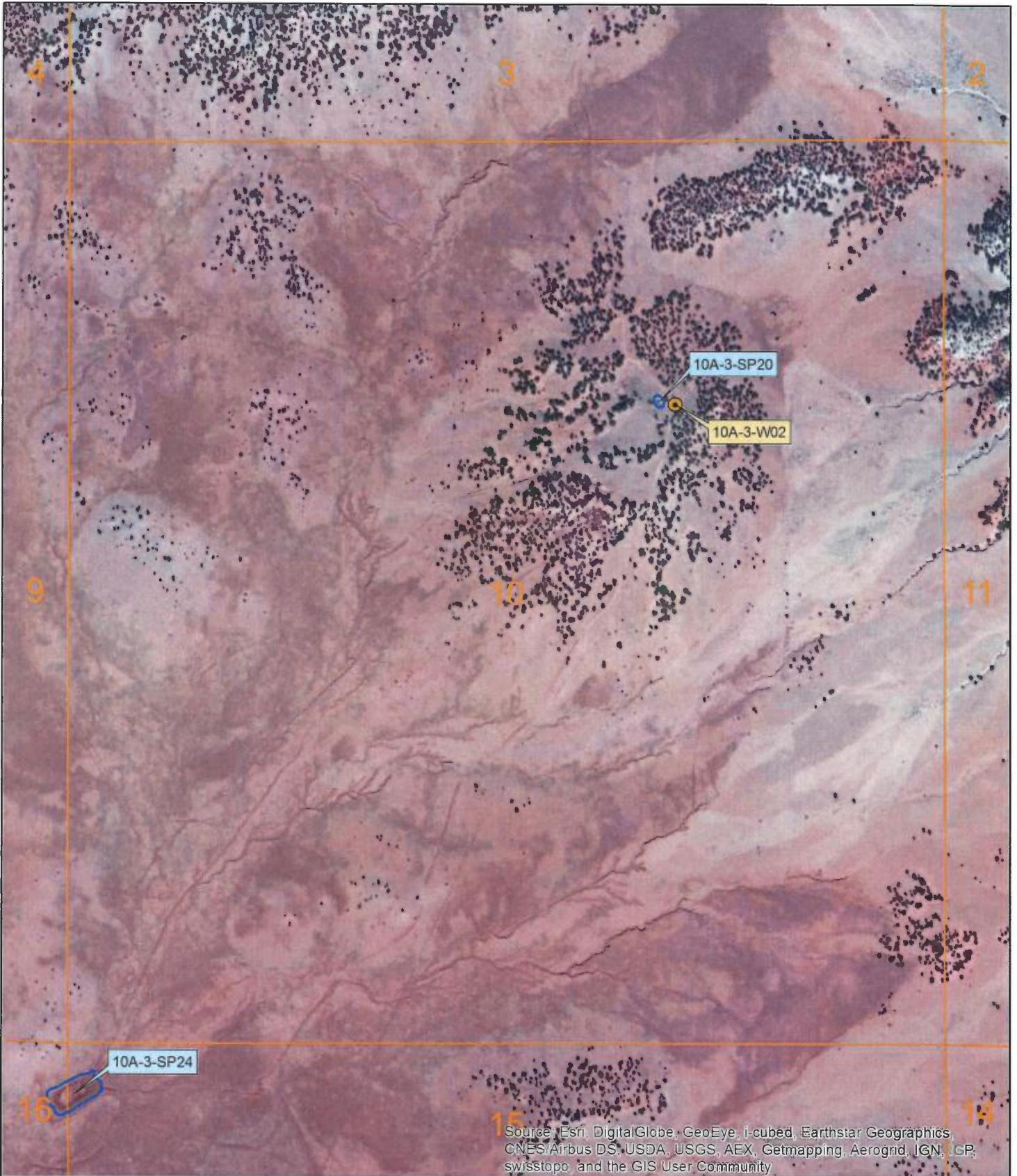
July 2017

**Sub-Area 9**  
**Subfile Number: ZRB-2-0098**  
**PLSS: S06, T06N, R18W**  
**Sheet 20 of 56**

**NATURAL RESOURCES CONSULTING ENGINEERS, INC.**

Fort Collins, CO    Oakland, CA    Washington, DC    Dakar, SENEGAL    Asmara, ERITREA



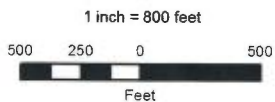


Source: Esri, DigitalGlobe, GeoEye, i-cubed, Earthstar Geographics, CNES/Airbus DS, USDA, USGS, AEX, Getmapping, Aerogrid, IGN, IGP, swisstopo, and the GIS User Community

November 2014

**LEGEND**

-  Well
-  Town
-  Stock Pond
-  Sub-Area Boundary
-  Section Boundary



Zuni River Basin  
Hydrographic Survey

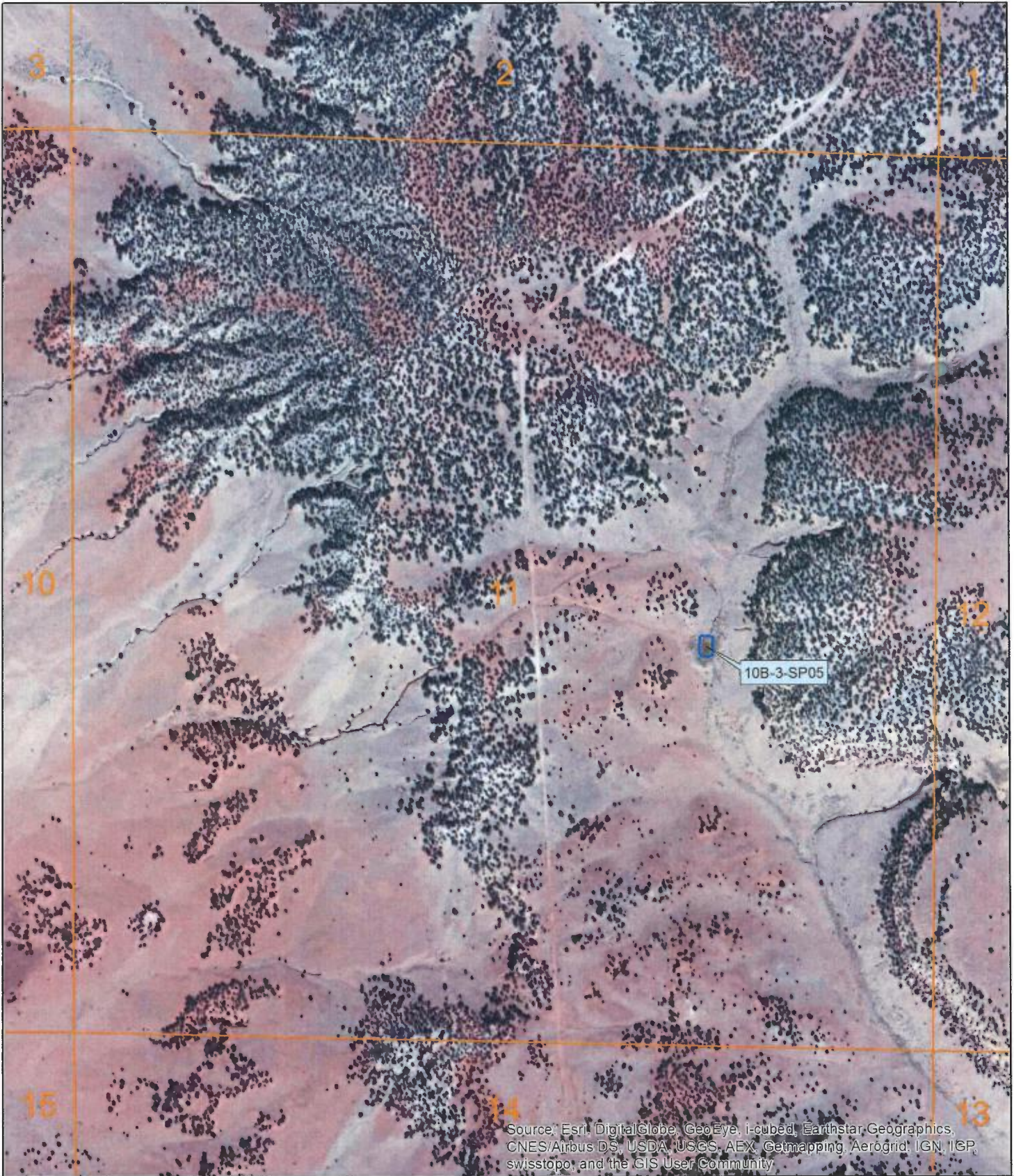
Sub-Area 10  
Subfile Number: ZRB-2-0098  
PLSS: S10, T06N, R18W  
Sheet 21 of 56



**Natural Resources Consulting Engineers, Inc.**

Fort Collins, CO    Oakland, CA    Asmara, ERITREA



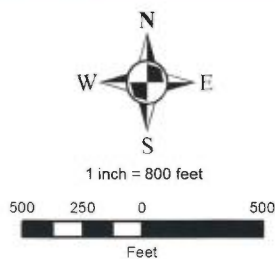


Source: Esri, DigitalGlobe, GeoEye, i-cubed, Earthstar, Geographics, CNES/Airbus DS, USDA, USGS, AEX, Getmapping, Aerogrid, IGN, IGP, swisstopo, and the GIS User Community

November 2014

**LEGEND**

-  Well
-  Town
-  Stock Pond
-  Sub-Area Boundary
-  Section Boundary



Zuni River Basin  
Hydrographic Survey

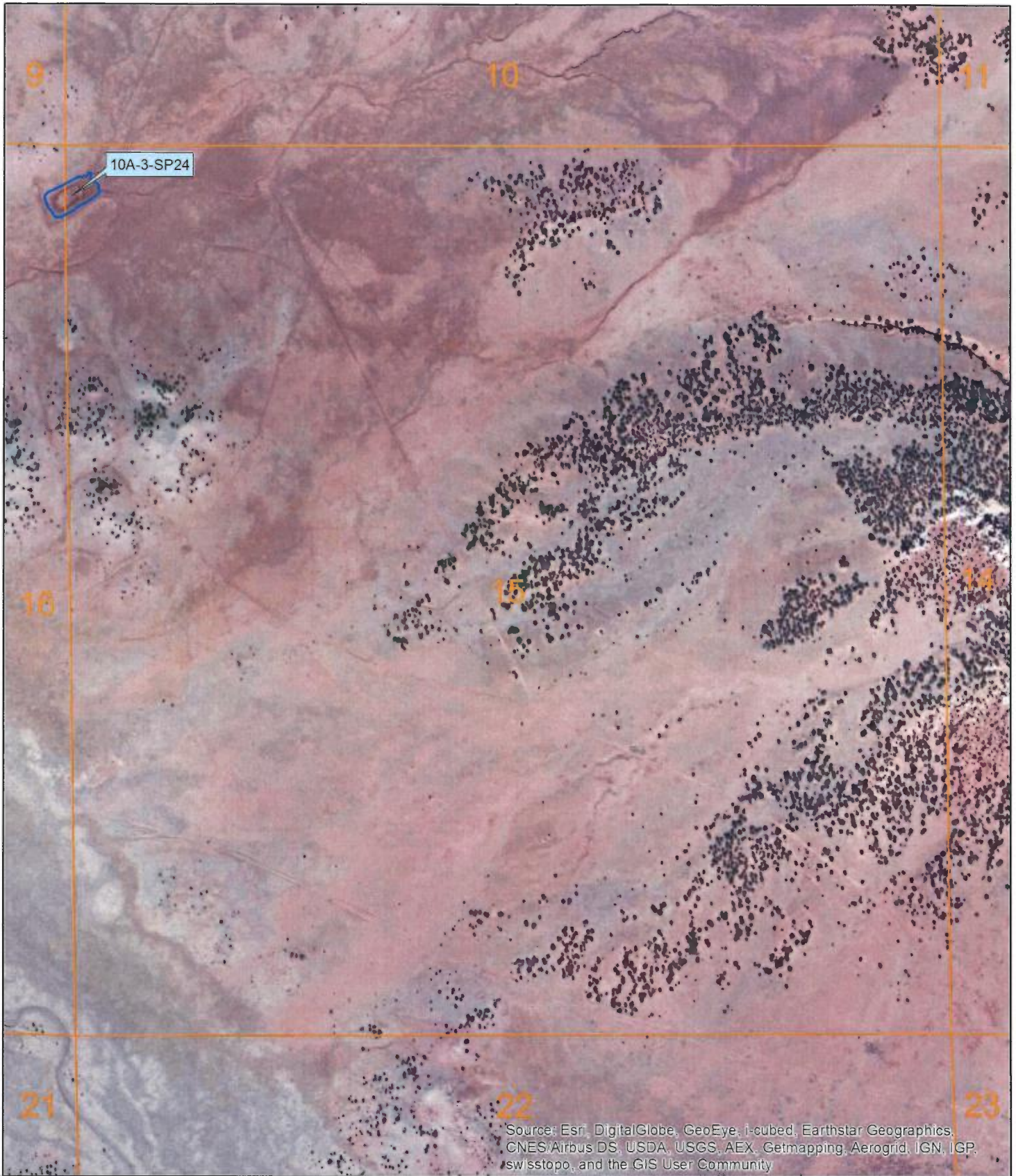
Sub-Area 10  
Subfile Number: ZRB-2-0098  
PLSS: S11, T06N, R18W  
Sheet 22 of 56



**Natural Resources Consulting Engineers, Inc.**

Fort Collins, CO    Oakland, CA    Asmara, ERITREA







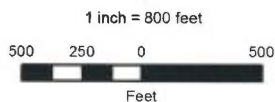


Source: Esri, DigitalGlobe, GeoEye, i-cubed, Earthstar Geographics, CNES/Airbus DS, USDA, USGS, AEX, Getmapping, Aerogrid, IGN, IGP, swisstopo, and the GIS User Community

November 2014

**LEGEND**

-  Well
-  Town
-  Stock Pond
-  Sub-Area Boundary
-  Section Boundary



Zuni River Basin  
Hydrographic Survey

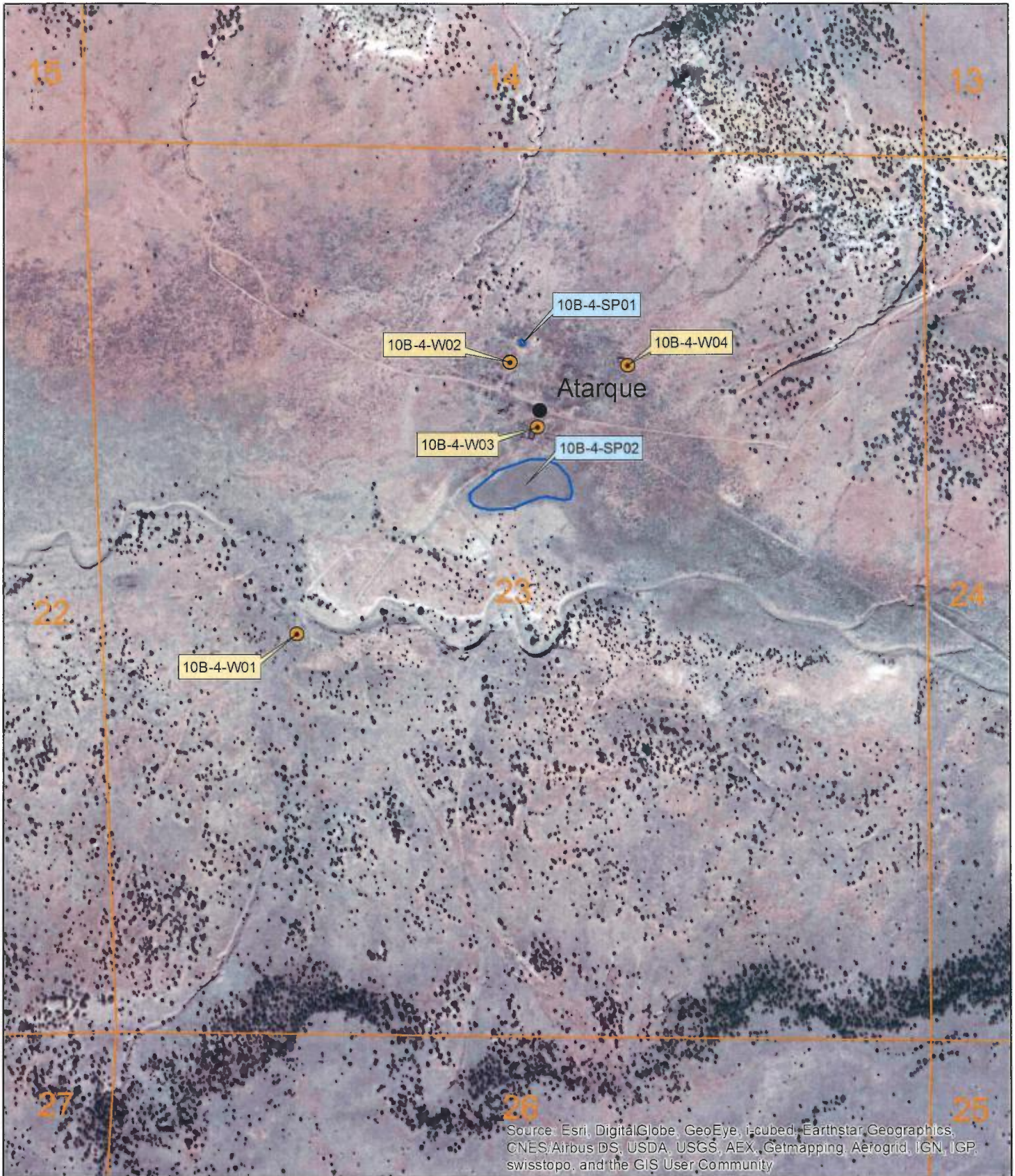
Sub-Area 10  
Subfile Number: ZRB-2-0098  
PLSS: S15, T06N, R18W  
Sheet 23 of 56



**Natural Resources Consulting Engineers, Inc.**

Fort Collins, CO    Oakland, CA    Asmara, ERITREA





Source: Esri, DigitalGlobe, GeoEye, i-cubed, Earthstar Geographics, CNES/Airbus DS, USDA, USGS, AEX, Getmapping, Aerogrid, IGN, IGP, swisstopo, and the GIS User Community

November 2014

**LEGEND**

-  Well
-  Town
-  Stock Pond
-  Sub-Area Boundary
-  Section Boundary



1 inch = 800 feet



Zuni River Basin  
Hydrographic Survey

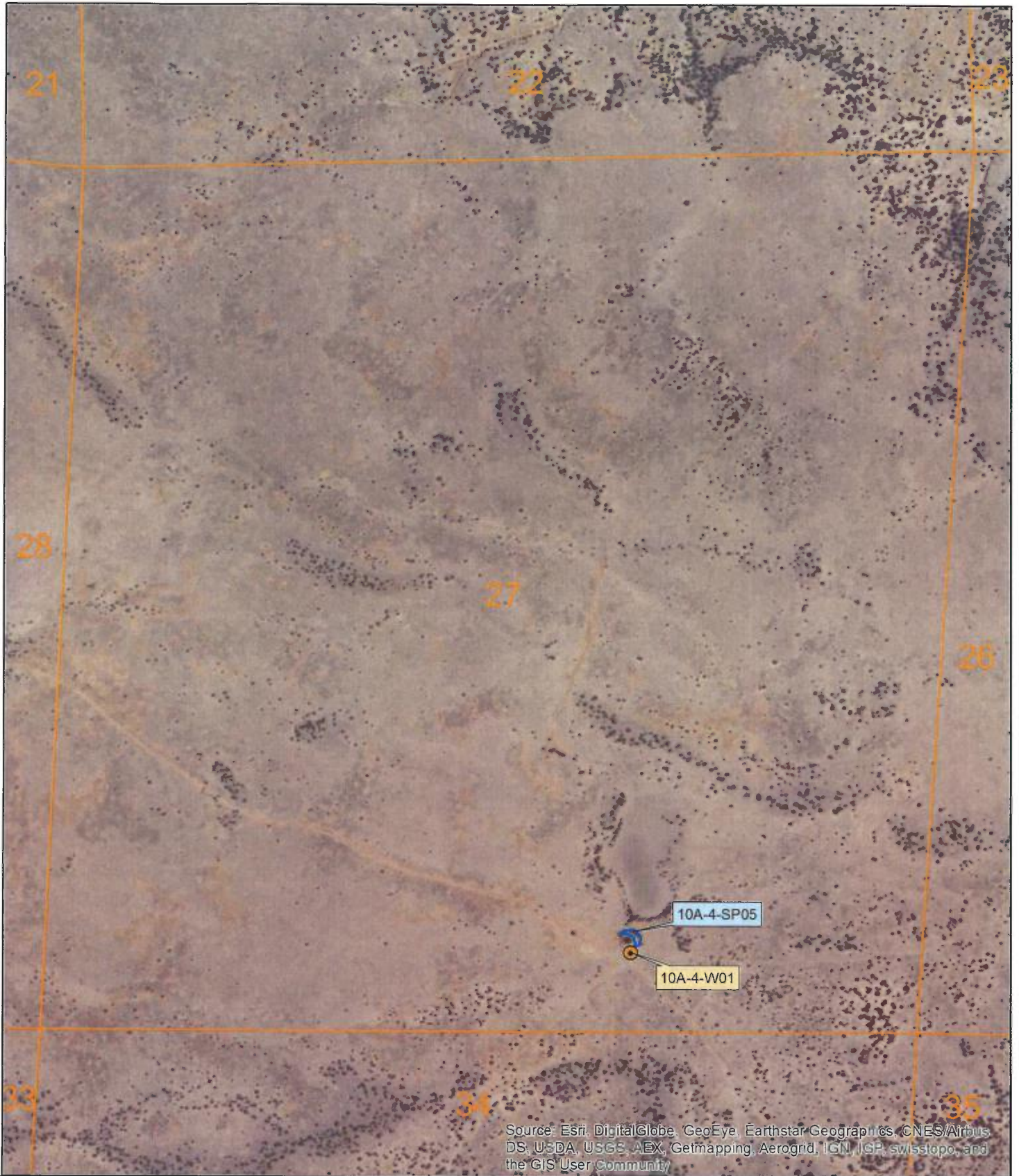
Sub-Area 10  
Subfile Number: ZRB-2-0098  
PLSS: S23, T06N, R18W  
Sheet 24 of 56



**Natural Resources Consulting Engineers, Inc.**

Fort Collins, CO    Oakland, CA    Asmara, ERITREA









Source: Esri, DigitalGlobe, GeoEye, Earthstar Geographics, CNES/Airbus DS, USDA, USGS, AEX, Getmapping, Aerogrid, IGN, IGP, swisstopo, and the GIS User Community

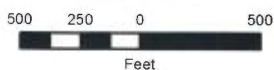
September 2015

**LEGEND**

-  Well
-  Stock Pond
-  Section Boundary
-  Sub-Area Boundary



1 inch = 800 feet



Zuni River Basin  
Hydrographic Survey

Sub-Area 10  
Subfile Number: ZRB-2-0098  
PLSS: S27, T06N, R18W  
Sheet 25 of 56



**Natural Resources Consulting Engineers, Inc.**






Fort Collins, CO    Oakland, CA    Asmara, ERITREA





Source: Esri, DigitalGlobe, GeoEye, Earthstar Geographics, CNES/Airbus DS, USDA, USGS, AeroGRID, IGN, and the GIS User

**LEGEND**

-  Well
-  Spring
-  Stock Pond
-  Section Boundary
-  Sub-Area Boundary



Zuni River Basin  
Hydrographic Survey

Sub-Area 10  
Subfile Number: ZRB-2-0098  
PLSS: S30, T06N, R18W  
Sheet 26 of 56

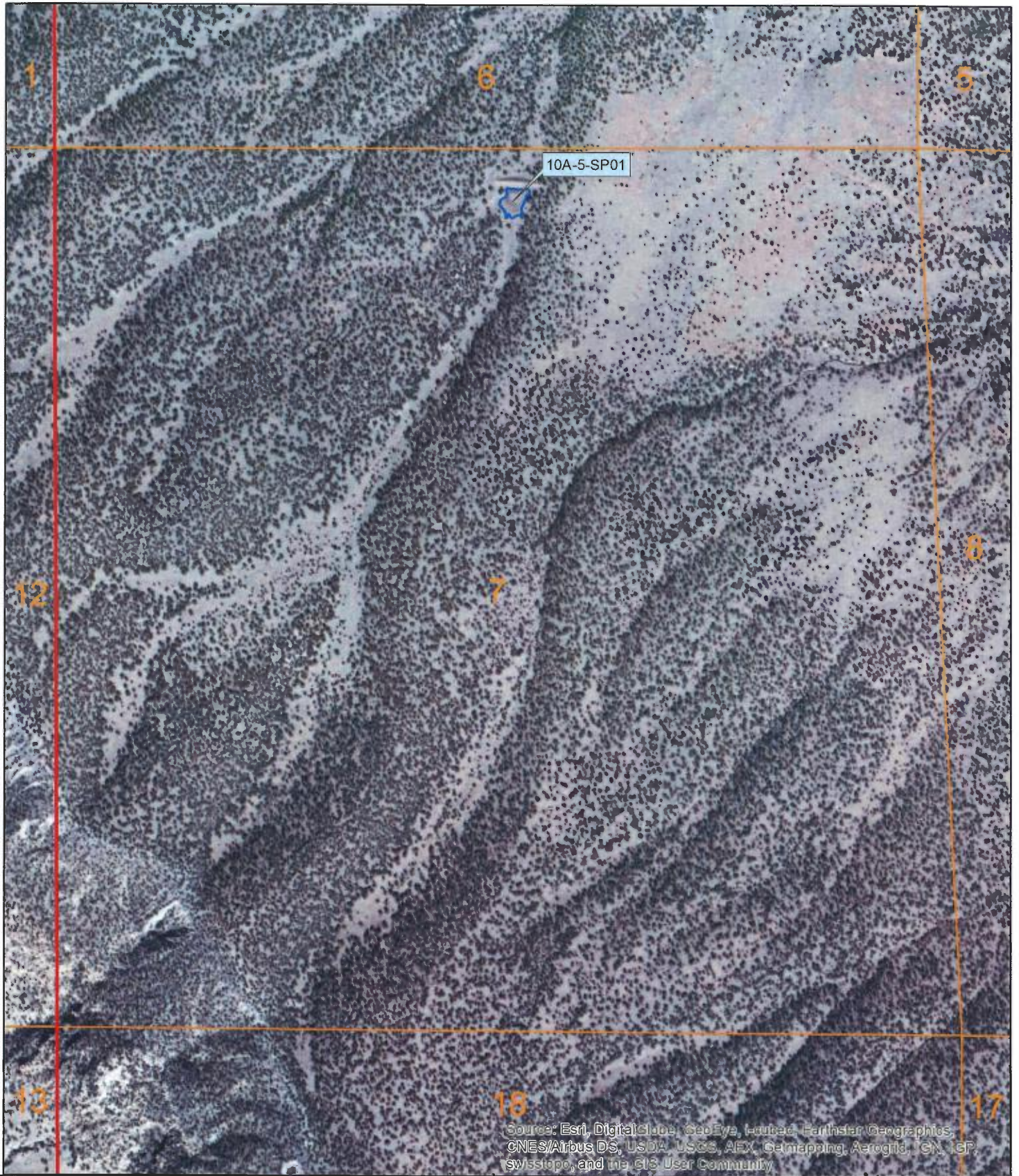
May 2017



**NATURAL RESOURCES CONSULTING ENGINEERS, INC.**

Fort Collins, CO Oakland, CA Washington, DC Dakar, SENEGAL Asmara, ERITREA

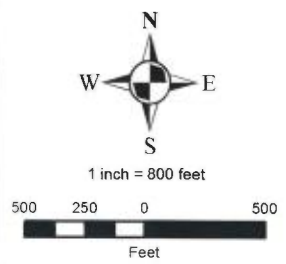




November 2014

**LEGEND**

-  Well
-  Town
-  Stock Pond
-  Sub-Area Boundary
-  Section Boundary



Zuni River Basin  
Hydrographic Survey

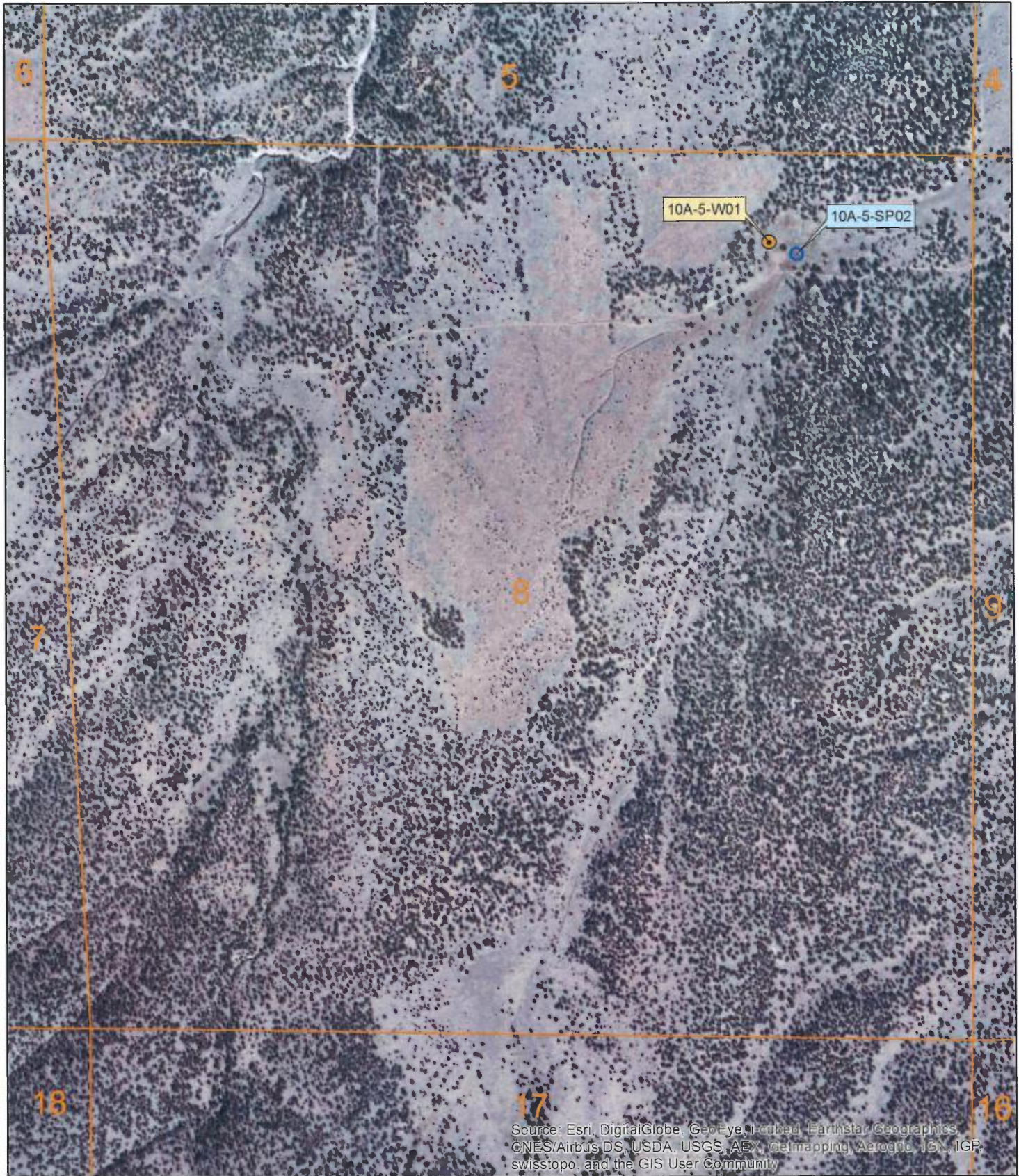
**Sub-Area 10**  
Subfile Number: ZRB-2-0098  
PLSS: S07, T05N, R18W  
Sheet 27 of 56



**Natural Resources Consulting Engineers, Inc.**

Fort Collins, CO    Oakland, CA    Asmara, ERITREA



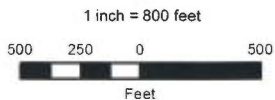


Source: Esri, DigitalGlobe, GeoEye, Earthstar Geographics, CNES/Airbus DS, USDA, USGS, AeroGRID, IGN, IGP, swisstopo, and the GIS User Community

November 2014

**LEGEND**

-  Well
-  Town
-  Stock Pond
-  Sub-Area Boundary
-  Section Boundary



Zuni River Basin  
Hydrographic Survey

Sub-Area 10  
Subfile Number: ZRB-2-0098  
PLSS: S08, T05N, R18W  
Sheet 28 of 56



**Natural Resources Consulting Engineers, Inc.**

Fort Collins, CO    Oakland, CA    Asmara, ERITREA