
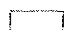
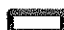
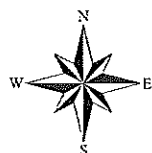


Source: Esri, DigitalGlobe, GeoEye, Earthstar Geographics, CNES/Airbus DS, USDA, USGS, AEX, Geomatics, AeroGRID, IGN, IGP, Swisstopo, and the GIS User Community

June 2015

LEGEND

-  Stock Pond
-  Section Boundary
-  Sub-Area Boundary



1 inch = 800 feet



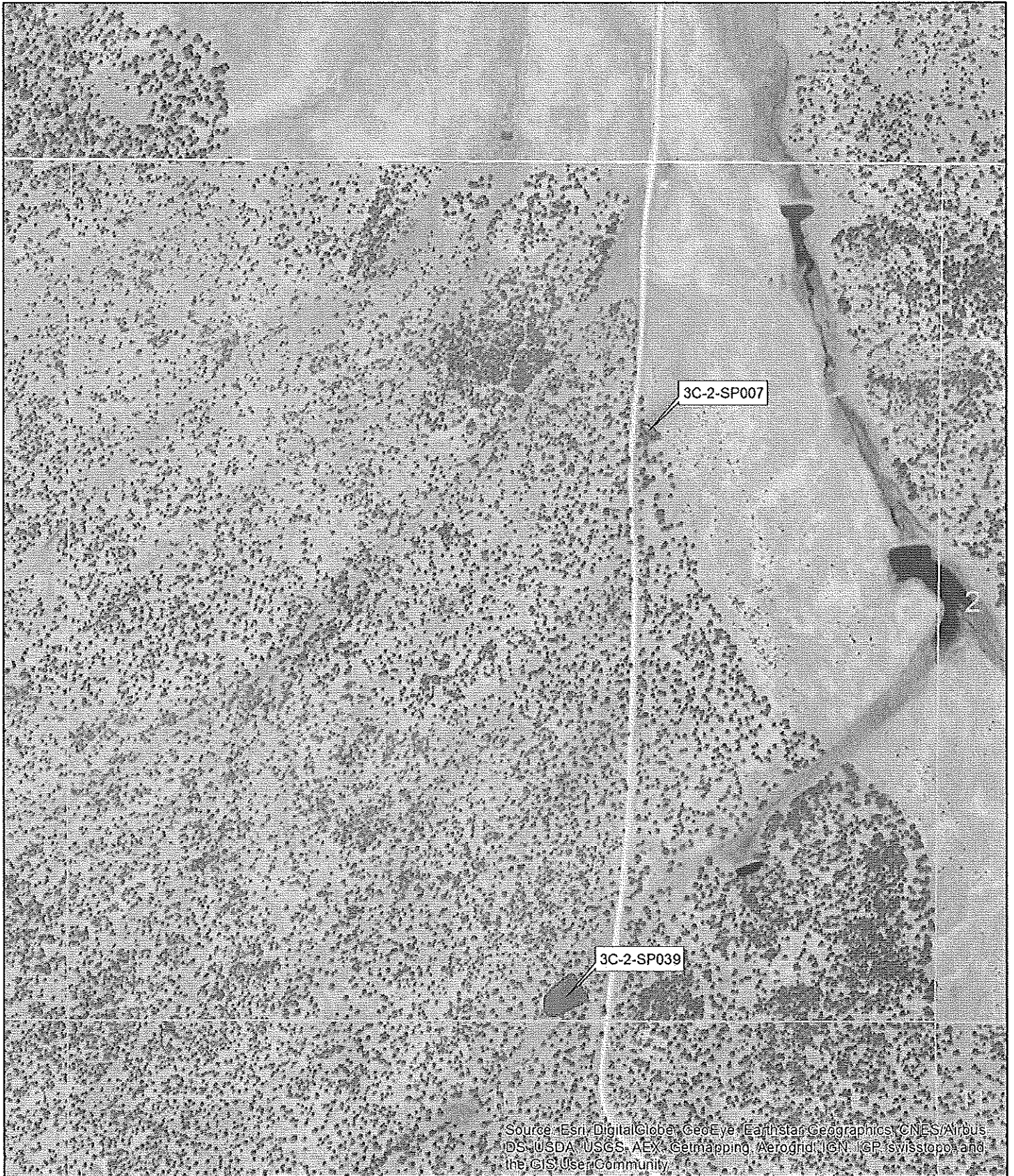
Zuni River Basin
Hydrographic Survey

Sub-Area 3
Subfile Number: ZRB-4-0271
PLSS: S01, T12N, R15W
Sheet 4 of 10




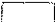
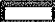
Natural Resources Consulting Engineers, Inc.

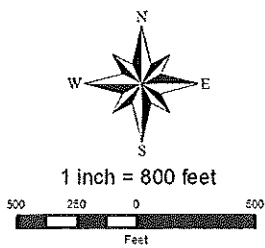
Fort Collins, CO Oakland, CA Asmara, ERITREA



Source: Esri, DigitalGlobe, GeoEye, Earthstar Geographics, CNES/Airbus, DLR/USDA, USGS, AEX, Geomapping, Aerogrid, IGN, IGP, swisstopo, and the GIS User Community

June 2015

- LEGEND**
-  Stock Pond
 -  Section Boundary
 -  Sub-Area Boundary

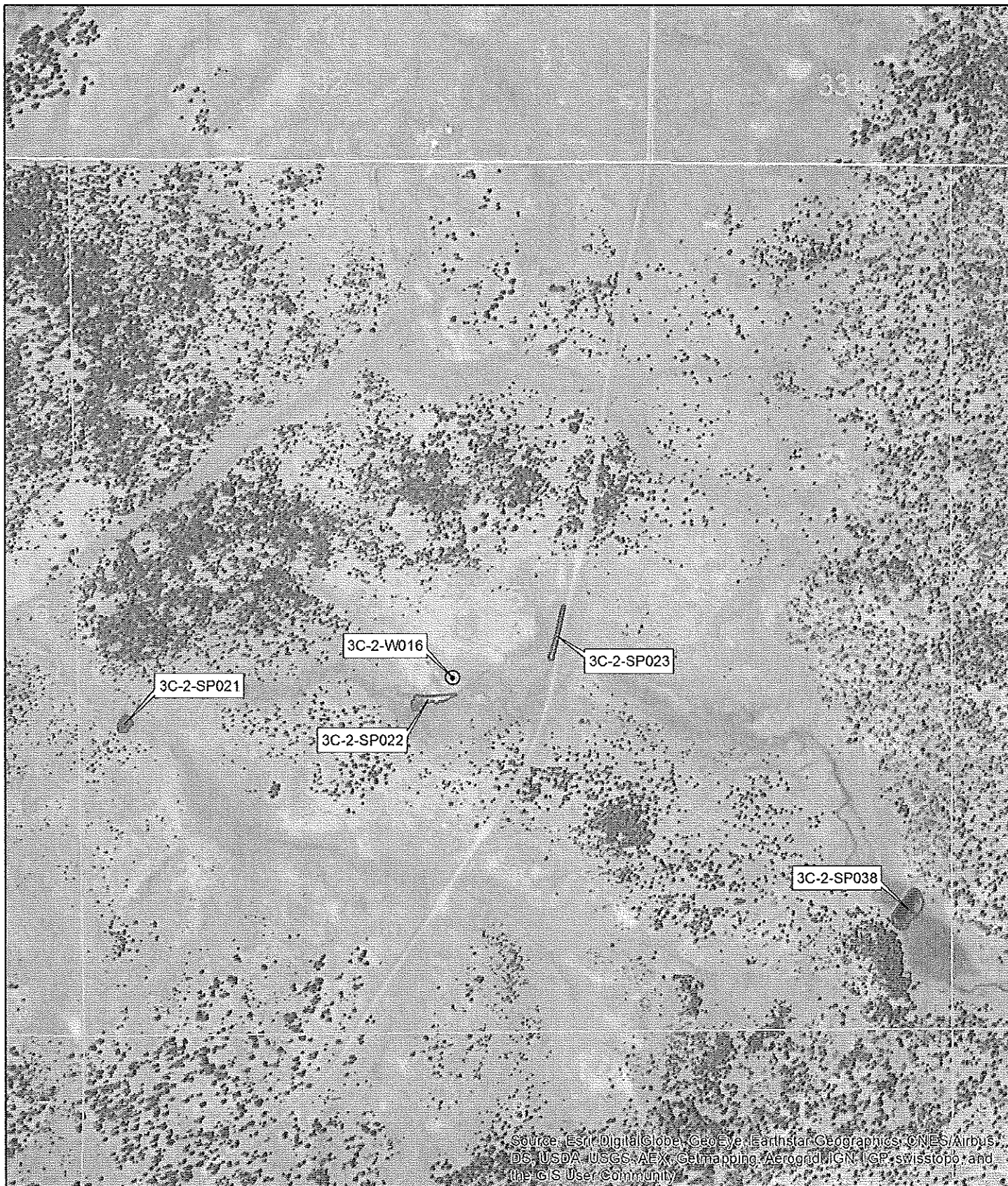


Zuni River Basin
Hydrographic Survey

Sub-Area 3
Subfile Number: ZRB-4-0271
PLSS: S03, T12N, R15W
Sheet 5 of 10







Natural Resources Consulting Engineers, Inc.
Fort Collins, CO Oakland, CA Asmara, ERITREA

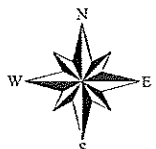


Source: Esri, DigitalGlobe, GeoEye, Earthstar Geographics, CNES/Airbus, DS, USDA, USGS, AEX, Geomapping, Aerogad, IGN, IGP, swisstopo, and the GIS User Community

June 2015

LEGEND

-  Well
-  Stock Pond
-  Section Boundary
-  Sub-Area Boundary



1 inch = 800 feet

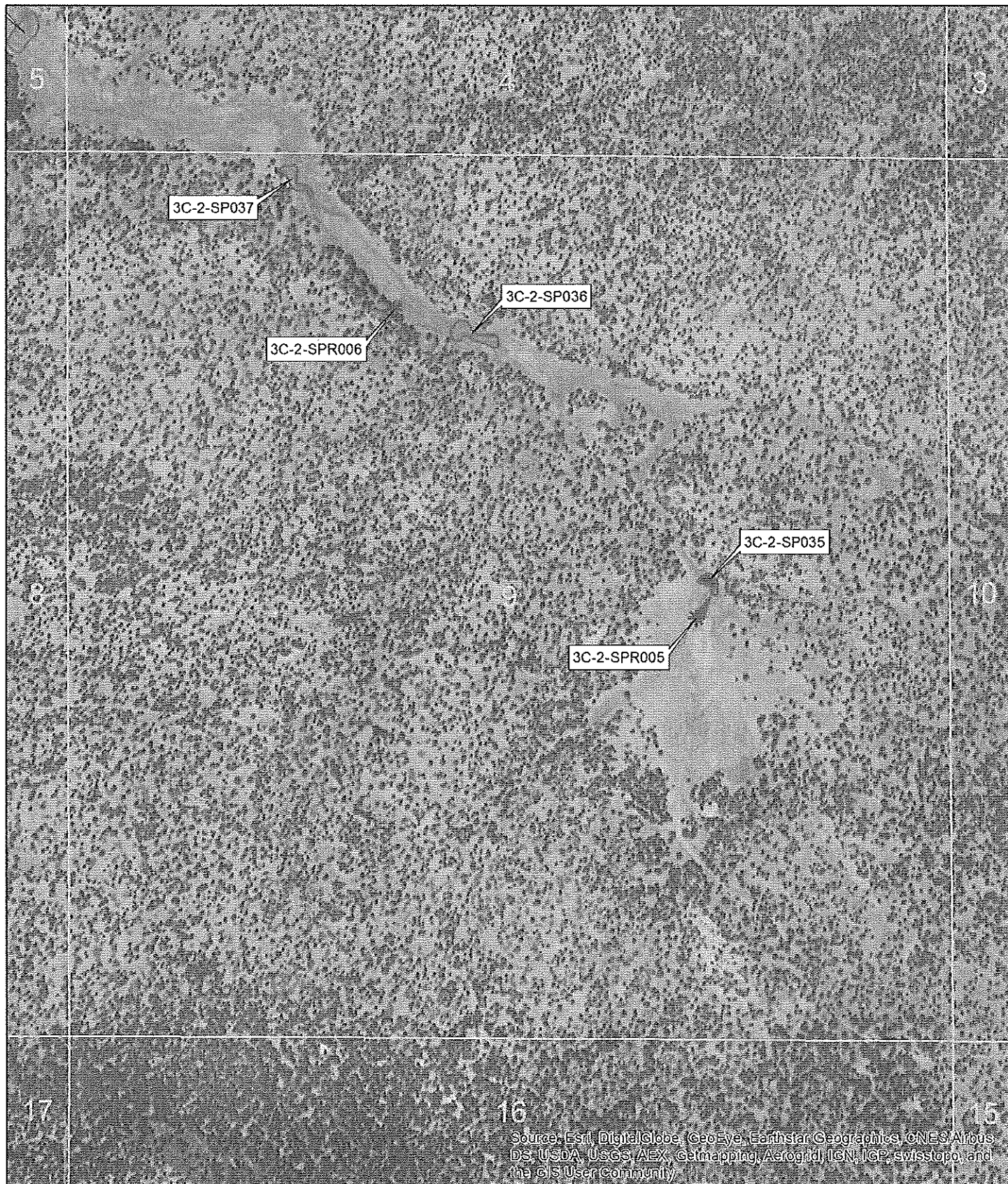


Zuni River Basin
Hydrographic Survey

Sub-Area 3
Subfile Number: ZRB-4-0271
PLSS: S05, T12N, R15W
Sheet 6 of 10





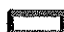
Natural Resources Consulting Engineers, Inc.
Fort Collins, CO Oakland, CA Asmara, ERITREA

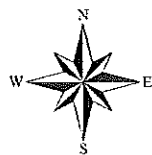


Source: Esri, DigitalGlobe, GeoEye, Earthstar Geographics, CNES/Airbus DS, USDA, USGS, AeroX, Getmapping, Aerogrid, IGN, IGP, swisstopo, and the GIS User Community

January 2016

LEGEND

- * Spring
-  Stock Pond
-  Section Boundary
-  Sub-Area Boundary



1 inch = 800 feet



Zuni River Basin
Hydrographic Survey

Sub-Area 3
Subfile Number: ZRB-4-0271
PLSS: S09, T12N, R15W
Sheet 7 of 10



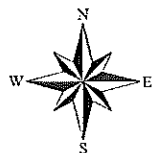
Natural Resources Consulting Engineers, Inc.

Fort Collins, CO Oakland, CA Asmara, ERITREA



LEGEND

- Spring
- Well
- Stock Pond
- Section Boundary
- Sub-Area Boundary



1 inch = 800 feet



Zuni River Basin
Hydrographic Survey

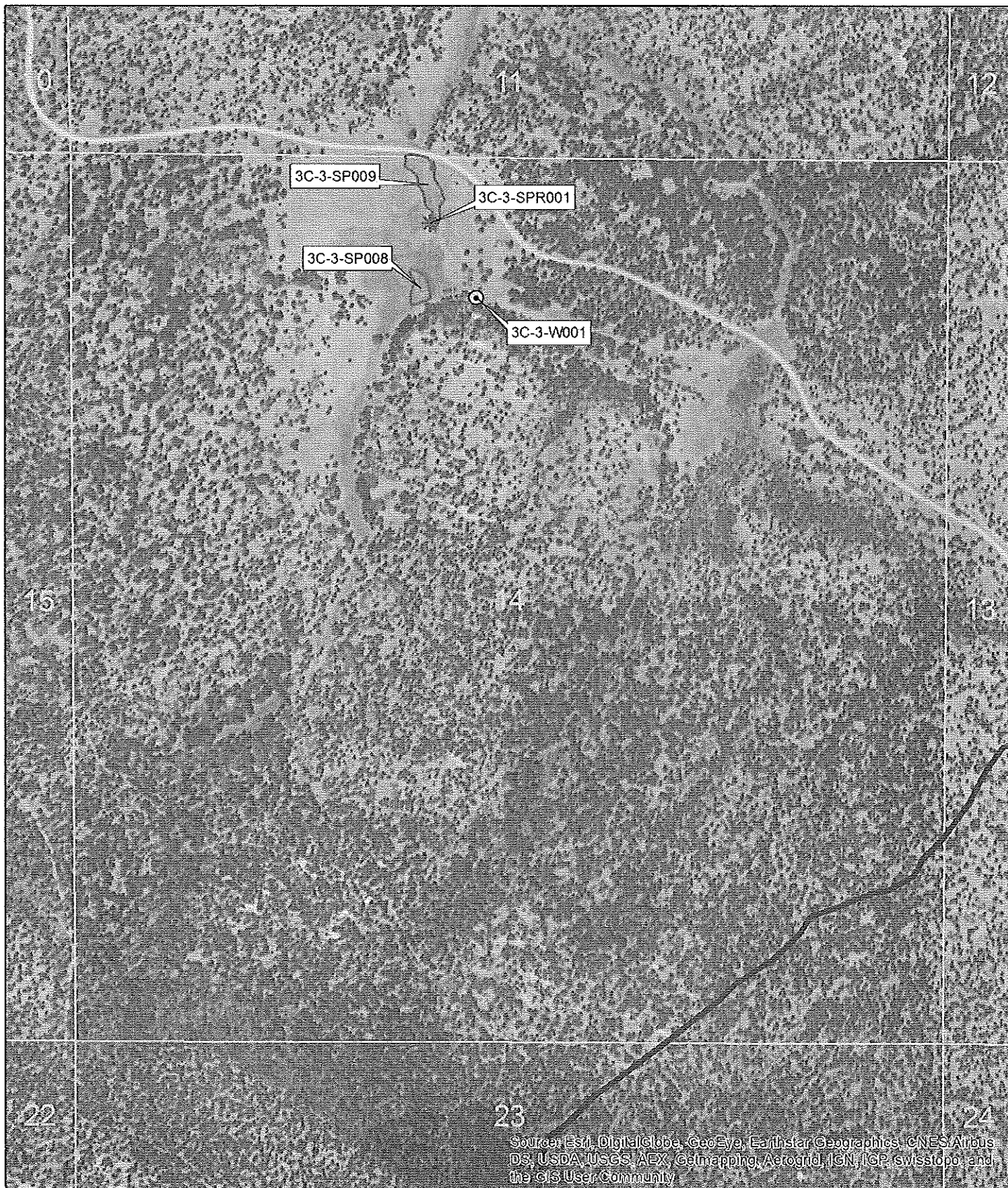
Sub-Area 3
Subfile Number: ZRB-4-0271
PLSS: S11, T12N, R15W
Sheet 8 of 10

January 2016



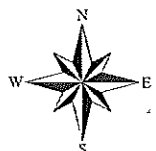
Natural Resources Consulting Engineers, Inc.

Fort Collins, CO Oakland, CA Asmara, ERITREA

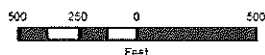


LEGEND

- Spring
- Well
- Stock Pond
- Section Boundary
- Sub-Area Boundary



1 inch = 800 feet



Zuni River Basin
Hydrographic Survey

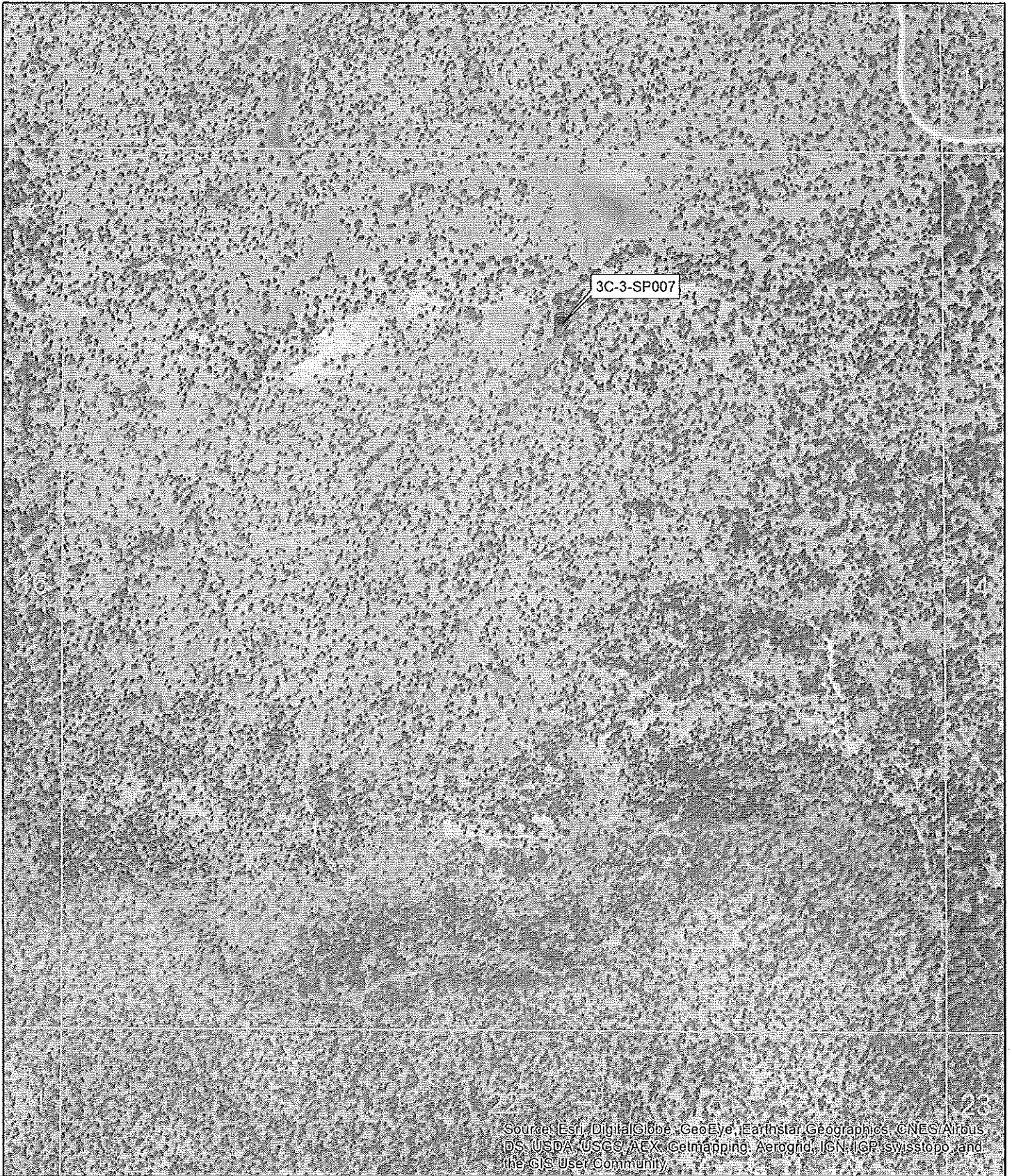
Sub-Area 3
Subfile Number: ZRB-4-0271
PLSS: S14, T12N, R15W
Sheet 9 of 10

January 2016



Natural Resources Consulting Engineers, Inc.

Fort Collins, CO Oakland, CA Asmara, ERITREA



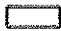
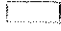

Source: Esri, DigitalGlobe, GeoEye, Earthstar Geographics, CNES/Airbus DS, USDA, USGS, AeroGRID, IGN, IGP, swisstopo, and the GIS User Community

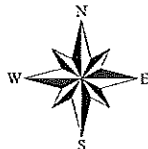
June 2015

Zuni River Basin
Hydrographic Survey

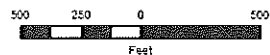
Sub-Area 3
Subfile Number: ZRB-4-0271
PLSS: S15, T12N, R15W
Sheet 10 of 10

LEGEND

-  Stock Pond
-  Section Boundary
-  Sub-Area Boundary



1 inch = 800 feet



Natural Resources Consulting Engineers, Inc.

Fort Collins, CO Oakland, CA Asmara, ERITREA