






March 2006

**LEGEND**

-  Well
-  Town
-  Stock Pond
-  Sub-Area Boundary
-  Section Boundary



1 inch equals 800 feet



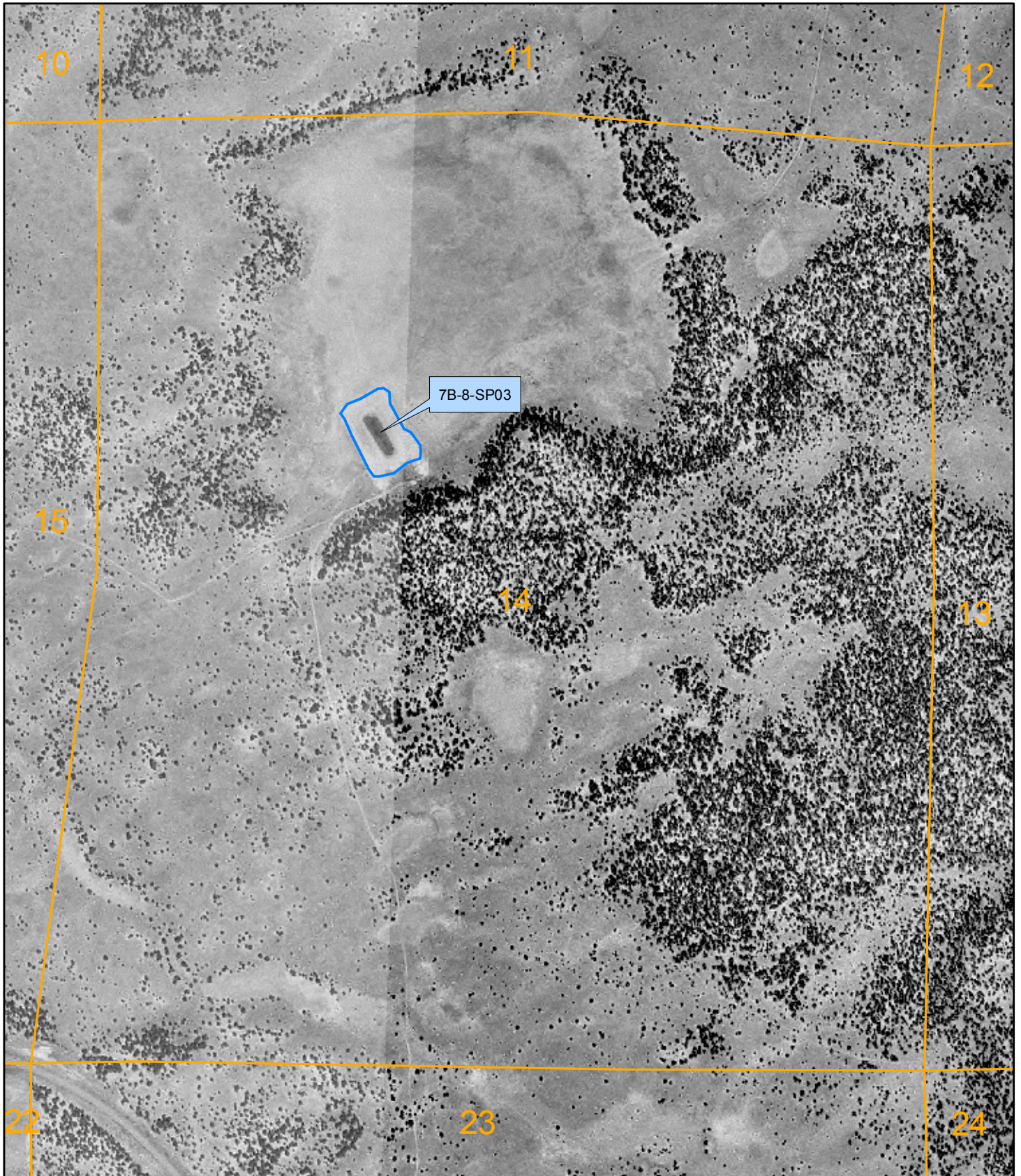
Zuni River Basin  
Hydrographic Survey

Sub-Area 7  
 Subfile Number: ZRB-3-0017  
 PLSS: S21, T06N, R15W  
 Sheet 3 of 7






**Natural Resources Consulting Engineers, Inc.**

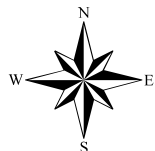
Fort Collins, CO    Oakland, CA    Asmara, ERITREA



March 2006

**LEGEND**

-  Well
-  Town
-  Stock Pond
-  Sub-Area Boundary
-  Section Boundary



1 inch equals 800 feet



Zuni River Basin  
Hydrographic Survey



**Natural Resources Consulting Engineers, Inc.**

Fort Collins, CO    Oakland, CA    Asmara, ERITREA

Sub-Area 7  
Subfile Number: ZRB-3-0017  
PLSS: S14, T05N, R16W  
Sheet 4 of 7